

April 2021 /
May 2021

9600 S. Dennison Blvd.
Northfield, MN 55057

www.mnlica.org
mnlica2@gmail.com

MINNESOTA LICA NEWS

LAND IMPROVEMENT CONTRACTORS OF AMERICA • MINNESOTA CHAPTER



Rulemaking: Clean Cars Minnesota

**Amendments adopting Low-Emission Vehicle and
Zero-Emission Vehicle air pollution standards
(Revisor's ID R-4626)**

MPCA is considering adopting rules that require vehicle manufacturers to deliver vehicles to the Minnesota market that produce lower emissions of greenhouse gases (GHG) and other air pollutants. The Clean Cars Minnesota rulemaking would enable Minnesota to adopt both the Low Emission Vehicle (LEV) and Zero Emission Vehicle (ZEV) standards.

<https://www.pca.state.mn.us/air/clean-cars-mn-rulemaking>

WELCOME NEW MEMBER:

Penn Contracting, Inc.

Dean Luxenburg
13025 Central Avenue Northeast
Blaine, MN 55434
Phone: 763-767-2141

WELCOME NEW ASSOCIATE:

Carry Pumps, Inc.

Delmar Nichols, Jr.
160 Prospect Avenue
Caro, MI 48723
Phone: 800-492-2779

PRESIDENT

Steve Vis

VICE PRESIDENT

Stu Frazier

CHAIRMAN OF THE BOARD

Michael Lehmann

TREASURER

Mark Olsen

EAST BOARD MEMBERS

*Jay Engles
Dallas Loken
Mark Morreim
Karlen Nelson*

WEST BOARD MEMBERS

Everett Garlich

OPEN POSITION

Brad Herickhoff

OPEN POSITION

RETIRED

OPEN POSITION

ASSOCIATE

Tim Dahl

EDITOR

Kevin Bakken





GREETINGS From Your PRESIDENT

MNLICA President's Report

Hello MNLICA Members

We are turning the corner to springtime at this writing. The Robins have showed up, basketball tournaments have started so we can probably expect a snowstorm or two yet.

MNLICA plans on having our spring meeting in person on March 25 in New Ulm. It seems like with all the vaccinations taking place it has started to free some stuff up.

There has been a lot of concern about MPCA adopting California's Clean Cars Rule. There are some good articles in this newsletter addressing this issue which will affect everyone in the construction and agriculture industry.

We have been in discussion with Mark Dittrich from MDA about a virtual drainage meeting happening April 7-8. Check out their website for details on that.

MNLICA is looking into the potential of having a field day of some kind this summer. Hopefully something that will bring MNLICA members together for learning something new and catching up with each other.

We are in need of potentially three board members for the western half of the state. Please consider this opportunity to serve on the MNLICA board.

In closing I wish everyone a safe and productive spring season and hope to see everyone soon.

Steve Vis- MNLICA President

**BOARD meeting on
THURSDAY,
JUNE 24th, 2021
at 5:00 pm
Place and Time
to be determined**

Quality Concrete Drain Tile

- Competitive prices
- Full inventory of 5" to 48" Concrete Drain Tile
- Concrete T's, Intake Caps, Gates
- Fast delivery to your jobsite

Hector Tile Company, Inc.
721 South Main Street, Hector, Minnesota 55342
1-800-640-9910

FEATURES

Presidents Report	2
Board Meeting Notice	2
MSHA	3
Thoughts by Stu Frazeur	5
Thoughts by Stu Frazeur Cont'd	7
Executive Director's Report	7
MN Soybean Response	8
MN Soybean Response Cont'd	9
Safety Matters	10
Imminent Dangers on the Job Site	11
Live Well, Work Well	15
Membership/Benefits	17
Board Meeting Attendance	18
Need Board Members	18
Live Well, Work Well Cont'd	19
Joke	20
Stove Top Easy Cheesy Chicken	20
MNLICA Web-Site Information	21
Easter / Mothers Day	23
MNLICA Upcoming Events	23

MNLICA Web-Site; www.mnllica.org

MSHA**Mine Safety and
Health Administration****MINE FATALITY** –On March 5, 2021,

a miner was fatally injured when the excavator he was operating rolled over into a body of water.

Best Practices:

- **Construct berms or install guardrails** on roadways where a drop-off exists. Ensure berms and guardrails are at least as high as the mid-axle height of the largest equipment using the roadway.
- **Examine and maintain roadways** to prevent slope instability such as over steepened banks, sloughs, and cracking on the roadway and bank.
- **Install locked gates at the entrances of roadways that are infrequently traveled.** Post speed limit signs and install delineators at the edges of roads.
- **Always wear seatbelts when operating mobile equipment.**

When working near water, wear flotation devices and ensure combination seat belt cutter/window breaker tools are installed in equipment. See safety alert <https://www.msha.gov/news-media/alerts-hazards/mnm-safety-alert-water-related-safety>.

Train equipment operators in the safe performance of their tasks, potential hazards, and the use of alternative/emergency exits in cabs. Examine these exits during pre-operational examinations.

LEARN MORE AT: *Miners and mine operators can find [safety and health information](https://www.msha.gov) on: MSHA.gov*

**WOLFE 540
SUPER PLOW**

The Wolfe 540 Super Plow is
WOLFE'S BEST SELLING MACHINE
in the drainage industry. It has a CAT 540 HP engine, plows to 7' deep, roads at 4.2 MPH, has 160,000 lb final drives and air ride cab. Boots 6"-12", 15", and 18" dual wall.



Call us today for more information on our machines that are available to buy or lease!

WOLFE**507-345-3252
800-736-3413****WWW.PLOWANDTRENCHER.COM**



IT'S SIMPLE GET MORE DONE. MAKE MORE MONEY.

NEXT GENERATION CAT® 349 & 352 EXCAVATORS

INCREASE EFFICIENCY
UP TO

45%

When every dollar counts, you need a machine that does more heavy-duty work in less time at a lower cost. Built to save fuel, engineered to reduce maintenance costs, and equipped with technologies that improve efficiency, these rugged, reliable new excavators work productively and profitably.

www.zieglercat.com

ZIEGLER 

Thoughts by Stu Frazeur

As Minnesota wraps up the winter season, it may feel like California, but that's not just because of the weather. California's greenhouse gas (GHG) regulations will be part of Minnesota if the MPCA and Governor Walz get their way.

In 2020 the MPCA published proposed text for adoption of the California Air Resources Boards (CARB) standards. The initial comment phase wrapped up on the 15th of March, with relatively little response from the public. Oral comments were made on February 22nd and 23rd and are accessible through a portal in the state.

Why is it that California is setting GHG rules in states other than California? The history goes back to a deal between the federal government and the state back in 1960's when California was allowed to opt out of the Clean Air Act as the state's standards were higher than the Clean Air Act. At that time Los Angeles and other metro areas had severe smog issues. This was a result of unburned hydrocarbons, nitrogen oxides, sunshine, increasing population and topography. These are factors that rarely come together in Minnesota. However, 13 states and the District of Columbia have adopted the rules.

The next step in the process is allowing comments on the previous comments.

A number of the comments urged moving the issue into the legislature. The author of this article believes this will not happen for a number of reasons. It would slow the process, which the Governor and MPCA don't want, and with the senate being in Republican control, passage is unlikely. However, in the author's comment on the rule he stated that with an issue that affects so many Minnesotans that the legislature should be where this rule is debated.

The Standards would relate to cars and small trucks at this time, but areas in California are looking at eliminating all Tier 0 through Tier 2 engines by 2030. For members of MnLICA this would be a serious undertaking, as many have maintained older machines in good working order.

MnLICA members are urged to talk to their legislators on this issue. It will be difficult to slow Governor Walz and his MPCA, but adopting a rule with such a small involvement of the public is wrong.

The Texas snowstorm is making a big impact on drainage contractors, plumbers and others who rely on plastic products. A number of manufacturers of plastic products are declaring a "force majeure" which allows price changes to cover increased inputs. The extreme temperatures and power outages led to as much as 75% of the nation's resin plants to be off line.

The price is one thing, but the bigger problem is supply. Whether it is farm drainage contractors, septic system installers or road builders, we know a lot of plastic is needed for our businesses. Drainage contractors will likely see good demand as farm income rose near the end of 2020. This was largely due to rising commodity prices and government payments which added to agriculture's profitability.

Manufacturers are generally encouraging contractors to plan ahead, allowing time for materials to arrive.

Northland Trenching Equipment, LLC

"We are the largest volume supplier for this type of equipment in the US"



Inter-Drain
Plows & Trenchers

Trimble TRIMBLE GPS SYSTEMS



The Inter-Drain plow, three types, double link, single cantilever, or single link, each in three sizes. Cat, Cummins or Volvo power. Offset available.



The Inter-Drain chain trencher. Four size choices, mechanical or hydraulic chain drive, vertical and offset available. Cummins, Volvo or Cat power.

FULL SERVICE AND REBUILDS

HUGE PARTS INVENTORY

Corporate Office
12929 410th Avenue
Waseca, MN 56093
Phone: (507) 835-4214
Fax: (507) 835-2032

Eastern Division - Indiana
3578 North State Road 59
Brazil, IN 47834
Phone: (812) 835-2900
Fax: (812) 835-2535

Email: nte@hickorytech.net
www.northlandtrenching.com

NORTHLAND Trenching
Equipment, LLC



RINKE NOONAN

attorneys at law

**FIRMLY
COMMITTED.**

320.251.6700 RinkeNoonan.com

Farmers, landowners, and land improvement contractors are becoming increasingly aware of the legal and permitting challenges created by wetlands, drainage, and conservation compliance. Working with a team of attorneys experienced in navigating the DNR, NRCS, Corps of Engineers, EPA, U.S. FWS, and county and local governments regulations adds value to the success of your project.



WETLANDS



PUBLIC DRAINAGE



COMPLIANCE



PERMITS

Thoughts by Stu Frazeur

Cont'd from Page 5

New MPCA code booklets are being released. There are a few changes, though this author has been able to sleep without much trouble, and thus, has not read the whole thing.

A "church rule" is in place now which allows for averaging flows over time. An example of this is, of course, a church, which sees moderate flow on one day a week. These flows can now be averaged, instead of having to design for a daily maximum flow.

Another change is the "Tank Integrity Assessment." This assessment is to be completed by a Designated Certified Individual and is good for three years. Basically, if the tank is pumped, an assessment can be made by any DCI. If the system needs an inspection, the inspector can see that the tank has been assessed, and

does not need to have the tank pumped again in order to determine the entire system is compliant.

The author, who was at a continuing education session this spring, states that there was a lot of discussion on the Tank Integrity Assessment.

There are some potential concerns for DCI's who sign this form. SSTS businesses may want to consider if they want the additional liability. Pumpers who have drivers who are not DCIs but are currently working under a DCI's direction, will need to upgrade those employees to a DCI status if they are to sign the new form. This will likely result in additional costs to the system owner. Also, contractors need to be adequately trained and equipped to perform the assessment.

Thoughts by Stu Frazeur

EXECUTIVE DIRECTOR'S REPORT

We've spent a good portion of the winter in a warmer climate, having just gotten back from Yuma, AZ.

We are trying to finish up the April/May newsletter.

Spring is right around the corner or maybe it's here. But I would expect one more snowy blast.

We should be paying close attention to Waltz and the MPCA Adoption of California Emission Regulations. I personally don't think it's a good fit for Minnesota and could cost us a lot of money down the road. I don't think this will stop at electric cars. We might be replacing our entire fleet of equipment before this is over.

I am hoping we can put together some type of Safety class or maybe even some video's. Individual companies can use to put on their own safety classes this year. There is always room for more "think safety" in every-body's company. The consensus is that everything still has to be done virtually so maybe small gatherings for safety programs would be preferable if possible.

We are happy to say there are four scholarship applicants this year.

The new directories should be out sometime this spring.

Here's to wishing everyone a safe and prosperous spring.

Kevin and Jeanie



This is the Minnesota Soybean Growers Association response to MPCA Emissions Rule!

<https://www.pca.state.mn.us/air/clean-cars-mn-rulemaking>

<https://www.pca.state.mn.us/sites/default/files/aq-rule4-101.pdf>

The Minnesota Soybean Growers Association (MSGA) would like to share our severe reservations regarding the Minnesota Pollution Control Agency's proposed Clean Cars Minnesota rulemaking (OAH docket number 71-9003-36416). MSGA is opposed to the State of Minnesota implementing another state's green-house gas reduction goals. MSGA is also opposed to the use of rulemaking to enact this rule without the robust discussions that occur during the robust legislative process. Simply put: There is not room in One Minnesota for California. Minnesota has been a leader in reducing greenhouse gas emissions (GHG) through our own rules and regulations and should remain a leader, not a follower in this arena. Tying Minnesota to the California system and Clean Air Act (CAA) waiver system will result in needless rulemaking in the future.

The MPCA argues that the rule will not impact bio-fuels, and therefore farm groups should not be concerned about the rule. MSGA disagrees with this assertion. We feel the rule sets Minnesota on a path where electric cars are considered the only answer to GHG reduction goals. California has already announced this intention with proclamations by their governor on goals to stop selling combustion engines. The SONAR cites new rules and standards adopted by the Trump administration as the reason that they need to act to maintain a reduction in GHG emissions. The SONAR ignores and does not address the election of Joe Biden as president and his announcement in January that he will act to reverse the very decisions that MPCA cites as the reason Minnesota must act. The SONAR's own graphics show reductions in transportation and other sectors GHG emissions. The undoing of the Trump administration's actions makes this rulemaking unnecessary.

Unlike California, which has four separate electric car company's world headquarters in their state, Minnesota is not the home of a single electric car company. Minnesota is, however, home to nearly 28,000 soybean farmers and three biodiesel plants. California does not produce anywhere near the amounts of soybeans that Minnesota does. Minnesota has been sued for our efforts in mandating Biodiesel in our fuel supply because of the GHG benefits and preemption by the CAA. This lawsuit was defended by the Minnesota Attorney General who described the Biodiesel Mandate not as a GHG statute, but a rural economic development program with GHG benefits. Minnesota won that lawsuit, and our mandate was upheld. Now MPCA appears to be prepared to work towards efforts that will hurt these economic wins in our state and shift those wins to California car companies.

MSGA is frustrated to see an agency, MPCA, that has been a primary opponent of blends over 20% biodiesel now pass over a proven GHG reduction solution in favor of technologies less proven to help with long term environmental issues. This rule does not account for the problems of where these electric car batteries will end up when they are no longer in service. It does not account for the environmental damage done in the mining industry done for necessary elements of these batteries. MPCA clings to old data on biofuels and ignores huge advances in biofuels production that lowers their carbon footprint.

One of our biodiesel plants ran calculations based on proven methods to illustrate this emissions reduction from the use of biodiesel. Renewable Energy Group found, "Here's how much higher

GHG emissions are for other fuel choices, compared to REG B100 (100% biodiesel): 580% higher with petroleum diesel; 435% higher with compressed natural gas; 195% higher with an electric vehicle with natural gas-derived electricity.”

Transesterification is the main chemical reaction used to create biodiesel from any vegetable oil or waist cooking oils. This reaction requires energy to drive the reaction. In a traditional transesterification reactor, the feedstock is heated from 70 deg F (on average) to 145 deg F. The amount of natural gas needed to perform this heating on 1M gallons of feedstock is approximately 263,000 cubic feet. This is the process used in the REG plant, which leads to the huge reductions in GHG over other fuel choices in their example.

In comparison, the Plasma Blue technology, created with research dollars from Minnesota’s soybean checkoff, greatly reduces the energy used to produce Biodiesel. Plasma Blue’s units can make the same 1mMillion gallons of biodiesel with using the same electricity needed to power two 60-watt light bulbs. This amount of power can be easily created from a solar cell the size of a standard dining room table. These gains in reduction of GHG with biodiesel will greatly increase the benefits seen from burning biodiesel in vehicles in Minnesota. MPCA, however, overlooks these potential GHG reduction gains in their SONAR and advances one solution.

This rule is not necessary. The SONAR looks at one solution and does not consider other options. The SONAR fails to address new directions the Biden administration is taken. It fails to look at the impact of more demand on a “dirty” grid will have that may exacerbate climate change. The MPCA has not shown that this rule is reasonable. The SONAR does not describe how the rule and switch to electric cars will have a direct impact on the climate change driven effects Minnesota is feeling. MPCA admits neighboring states are not moving in this direction. With Green House gases

not recognizing state borders, there is no proof in the SONAR that Minnesota’s actions will help Minnesota other than by meeting arbitrary goals.

Rulemaking is not the forum for these type of changes in State Law. MSGA and the State have directly different opinions on key definitions involved in the California Air Resources Board and their rulemaking. MN fought efforts to attack our Biodiesel mandate and adopted a position that soybean oil is a waste oil and a drag on the soy crush industry in the state. California calls soybean oil a human food product in direct opposition to MN’s position. By using the rulemaking process, this rule is not being vetted as thoroughly as it should be and these differences are not being discussed.

MSGA has been advocating for the use of Biodiesel in the state’s fuel supply for decades. Biodiesel was the first fuel named an advanced biofuel by the U.S. Environmental Protection Agency based on its ability to GHG by more than 50% compared with petroleum. The agricultural community hasn’t rested on our laurels with this level of reduction. The SONAR does not address any of these new technologies as a way to meet our GHG emission goals. They did not consider any other option than to adopt a California electric vehicle mandate. As discussed above, biofuels technologies are advancing and making these fuels more and more beneficial in their GHG reduction. The Biden administration’s EPA will surely be on a different trajectory than the Trump administration. California has already announced an intention to change their rule. All of these are very compelling reasons to stop the processes of adopting a rule that will be obsolete in the near future. MSGA opposes the adoption of this rule.



Safety Matters

Warehousing

Provided by: Prins Insurance, Inc.

Maintain Three-point Contact at All Times

Because jumping down off large equipment is a common practice for warehouse workers and many other physical jobs, it's no surprise that lower back, knee, ankle and neck injuries occur more frequently. Regardless of the type of equipment you work with, mounting and dismounting safely should always be top of mind.

What You Can Do

To lessen your risk of injuries, all you have to do is follow these simple mounting and dismounting instructions:

- When using a new piece of machinery, become familiar with proper mounting and dismounting procedures.
- When a person jumps from a height of more than one foot, the force that goes through the body is about 14 times the person's body weight. In other words, a 165-pound man who jumps out of a truck cab, tractor or any other high surface is exerting 2,310 pounds of force on his body. This causes injury to bones, tendons and cartilage. And if you're doing this multiple times every workday, the damage to the body can be extensive.
- When dismounting and mounting, maintain three-point contact. This means having contact with the equipment by either one foot and two hands or one hand and two feet. The smaller the triangle you form with your body, the more stable you are.
- Always face the vehicle, both when mounting and dismounting.
- Look at the surface below before stepping and make sure it is even to prevent ankle and knee injuries.
- Never mount or dismount moving equipment.
- Do not mount or dismount with anything, including tools, in your hands. Not only does it throw the body off-balance, it also reduces your chance of recovering your balance if you do slip. Use a drop rope to raise and lower supplies, tools and equipment instead.
- Handholds and footholds are on the equipment for a reason—use them.
- Wear appropriate clothing. Loose or torn clothing can get caught on equipment when you are jumping down instead of climbing down. In slippery conditions, wear proper footwear to prevent slipping hazards.
- Proper vehicle maintenance also contributes to the safe mounting and dismounting of equipment. Make sure running boards, treads, steps, footholds and platforms are kept clear. Hazards like ice, snow and grease could cause slips, trips and falls.



PLAYING IT SAFE

CONSTRUCTION

Imminent Dangers on the Job Site

Helpful tips for reducing your risk of injury at work

An imminent danger is a workplace hazard that puts you at an immediate risk of death or serious physical harm. It may be a safety hazard, such as an unstable trench or an exposed electrical wire, or it may be a health hazard, such as toxic substances, dangerous fumes, dusts or gases. These dangers could cause irreversible physical harm, death or reduced physical or mental performance.

Encountering an Imminent Danger

If a safety or health hazard puts you in imminent danger of death, serious injury or illness, notify your supervisor immediately and request a corrective action to the problem. Also request that you get protection from the hazard until it is eliminated or controlled.

How You Are Protected

The Occupational Safety and Health Administration (OSHA) and the National Labor Relations Board work together to protect employees who are punished for refusing to work in imminently dangerous situations that involve serious safety and health hazards. In addition, OSHA can provide assistance if you are discharged or disciplined for refusing to do work that would expose you to imminent danger, providing that you notified your supervisor of the hazard, the hazard has not been corrected, and there is not enough time for you to seek

relief through OSHA's standard complaint process.

No Consequences

In addition, it is illegal for Your Company to punish you for reporting a safety or health hazard under the Occupational Safety and Health Act (OSH Act). This law protects you from being discriminated against, fired, demoted or otherwise penalized for any of the following:

- Complaining to your supervisor about a hazard
- Requesting an OSHA inspection
- Participating in union safety and health activities
- Otherwise exercising your rights under the OSH Act

If Your Rights Are Violated

If you believe that your rights have been violated, you must file a complaint with OSHA within 30 days of the incident. OSHA can then work with your employer to restore your job, earnings and benefits. You will also not have to pay any legal fees.

Be safe and healthy on the job at **YOUR COMPANY** with these helpful tips provided by **Prins Insurance, Inc.**

OSHA exists to protect you on the job, and it strives to do so in many ways. To learn more about your rights as a worker, visit www.osha.gov.

This flyer is for informational purposes only and is not intended as medical or legal advice.

© 2009-2010, 2017 Zywave, Inc. All rights reserved.

 **PRINS**
INSURANCE

HARD WORK. RELIABILITY. PRIDE.

➤ It's what matters.

You've worked hard to construct a reliable business that takes pride in excellent workmanship. **That matters.**

UFG Insurance knows the importance of protecting the reputation you've built.

As the carrier of choice, we're proud to offer members of the Minnesota Chapter of LICA a special opportunity to participate in our trusted state LICA insurance program.

- Receive products and services tailored to unique industry needs, including comprehensive risk control.
- Exceptional customer service that doesn't end when a contract is signed.

Find a UFG agent today at ufginsurance.com.



BRON
POWER TO PERFORM

www.rwfbron.com

- Five Core Cooling System exceeds cooling for Tier 4 engine standards
- Quieter Reconfigured Cab Interior for Operator comfort
- Standard DL 850 Drainage PLOW increased strength & durability
- LED Light Package for increased visibility for those long days in the field
- Improved swing mechanism for the Onboard Reel for smoother reel speeds & consistent torque
- Optional hydraulic rear step raises out of the way when plowing and lowers when required.
- Standard oscillating track frames.

BRON 585 SELF-PROPELLED DRAINAGE PLOW

AUTO STEER READY | LOW GROUND PRESSURE
CAT OR CUMMINS ENGINE



Proud sponsor of Minnesota LICA

Your local John Deere construction equipment dealer.



RDO Equipment Co. provides the equipment, parts, service, and technology you need to take your business to the next level.

Contact your nearest location for more information.



MINNESOTA

Burnsville 952-890-8880
Dayton 763-294-7800
Fergus Falls 218-739-3284
Mankato 507-387-1836
Marshall 507-532-0994

Moorhead 701-526-2200
Rochester 507-282-8888
Sauk Rapids 320-259-6222



JOHN DEERE



RDO
EQUIPMENT CO.

Water Management Solutions for Today's Farmers



Advanced Drainage Systems®
provides farmers with drainage
pipe and complete water
management solutions designed
for modern, successful farms.



**We know farmers. They know us.
Let's help them together.**

ADS Agriculture Applications

- Field Drainage
- Lift Stations and Pumps
- Water Quality and Control

© 2019 Advanced Drainage Systems, Inc.

ADS
AGRICULTURE

Relationships that begin
at the farmhouse door.

1-800-733-9554

www.ads-pipe.com



Making Every Bite Count

The foods and beverages you consume have a significant impact on your health. In fact, 60% of adults have one or more diet-related chronic diseases.

The newly released [Dietary Guidelines for Americans](#) (2020-2025) offers science-based nutrition advice to develop healthy eating habits and reduce chronic disease risk. For the first time, this edition provides recommendations by life stage, from birth through older adulthood.



The latest guidance provides four overarching guidelines that encourage healthy eating patterns and recognize that individuals will need to make shifts in their food and beverage choices to achieve a healthy pattern. Make every bite count and consider the following:

1. **Follow a healthy dietary pattern at every life stage.** Dietary needs and recommendations vary based on your age, sex and stage of life. Review the guidelines to ensure that you and your loved

ones—whether they're infants, children, teens, adults or elderly—are following a healthy diet.

2. **Customize your foods and beverages to reflect personal preferences, cultural traditions and budgets.** A healthy dietary pattern can benefit all people regardless of age, race, ethnicity or current health status.
3. **Focus on meeting food group needs with nutrient-dense foods and beverages, while staying within calorie limits.** Nutrient-dense foods are rich in vitamins and minerals, without too much added sugars, saturated fats and sodium.
4. **Limit foods and beverages high in added sugars, saturated fats and sodium.** Be mindful of the nutritional facts of the foods and beverages you consume—including alcohol. Men should limit alcohol to two drinks a day and women should consume no more than one drink per day.

Everyone can benefit from a healthy eating pattern, so start simple with modest changes each day. For healthy recipes or to learn more about the current guidelines, visit [MyPlate.gov](https://www.myplate.gov).



This article is intended for informational purposes only and is not intended to be exhaustive, nor should any discussion or opinions be construed as professional advice. Readers should contact a health professional for appropriate advice. © 2021 Zywave, Inc. All rights reserved.

BRON Add on Plow



MITKO

SPECIALTY SALES & SERVICE

www.mitkollc.com

1954 N Linn Ave
New Hampton, IA 50659

Phone: 641-394-3141 | Fax: 641-394-3823

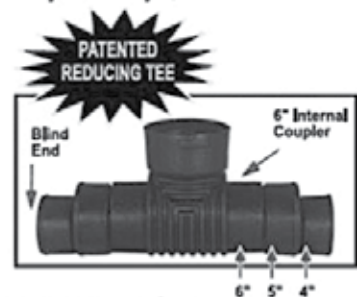
Precision Intakes

Full Line of Surface Water Intakes

- 8" & 10" riser with patented 8" & 10" combination Tees.
- Also 6" square & round risers with patented reducing Tee.
- Constructed of heavy-weight, high-density polyethylene.
- Parts highly adjustable & interchangeable with others on the market.
- Orifice plate placed at tee level or at ground level.
- Exclusive locking device on each part.
- User Friendly-Priced effectively.
- Adaptor available to repair old metal or broken intakes.



Why inventory 2, when 1 serves both!



"Dealer Inquires Welcome"

PRECISION INTAKES

Tim Rozendaal — Coretha Rozendaal (800) 932-7611
2064 Republic Ave West, Monroe IA 50170 (641) 259-2651
www.precisionintakes.com Fax (641) 259-3218

Tile | Dual Wall | Metal Culverts | Intakes | Septic Systems | PFC | Hydrants | Plumbing Supplies

KAHN

Tile Supply LLC

Jason Shekleton
(319) 229-6686

535 West Main
LeRoy, Minnesota 55951

Bruce Freerksen
(507) 273-9110

17075 560th Street
West Concord, Minnesota 55985
55090 200th Avenue
West Concord, Minnesota 55985



New Hampton, IA 50659
641-394-4756

Ag Drainage Equipment * Lasers * GPS



Authorized Service Provider

www.midtechgps.com



OSHA Tip of the Day:

**Do not share objects or tools
between workers without
appropriately disinfecting them.**



Occupational
Safety and Health
Administration

www.osha.gov

MEMBERSHIP APPLICATION

Please enroll me as a Member of the Minnesota Land Improvement Contractors Association. I understand that I will receive all member benefits, and that they will begin as soon as my application is approved and my dues are received in the State Office. My membership fee includes membership in the National Land Improvement Contractors of America.

Name: _____

Spouse: _____

Company: _____

Address: _____

City, State, Zip: _____

Phone: _____

Cell: _____

Email: _____

Type of Business: _____

Please enclose check payable in the appropriate amount as indicated below and mail this form to:

MNLICA

9600 South Dennison Blvd.
Northfield, MN. 55057

Contractor Member	\$350.00
Associate Member	\$200.00
Retired Member	\$ 50.00

LICA AND MNLICA BENEFITS

- ◆ National & State Conventions
- ◆ State & National Scholarship Awards
 - ◆ Newsletter Communication
 - ◆ Legislative Representation
 - ◆ Exchange of Ideas
 - ◆ Advertising
 - ◆ Friendship
 - ◆ Pride of Excellence
- ◆ State and National Directories
 - ◆ U of M Accredited Trainings
- ◆ MSHA & OSHA Accredited Trainings
- ◆ Accredited First Aid & Adult CPR Trainings
- ◆ Access to Drug & Alcohol Testing Program
- ◆ Access to a Wide variety of Associate Members for Equipment Supplies & Advice in all Areas of Business
- ◆ Representation on the USDA'S State Technical Committees
- ◆ Representation on the Environmental Issues Council Which Works to bring Common Sense into Government Actions in the Name of the Environment
- ◆ Caterpillar Extended Powertrain Protection Program
 - ◆ Mack Trucks Program
 - ◆ Sunbelt Rentals Discount
- ◆ LICA Contractor Safety Management Plan
 - ◆ The LICA Safety Portal
 - ◆ Lifestyles Health Plans
 - ◆ Bridgewell Health
- ◆ LICA Benefits From Machinery Trader (Buy & Sell Equipment with the Inventory Management System, advertising Discount from Machinery Trader, TelematicsPlus Benefit, LICA Beef Benefit, Currency Finance: Equipment Financing, Premium Hosted Website, Currency Pay: Payment Processing, eCommerce Benefit: Sell from your Website
 - ◆ LICA Benefits Platform
 - ◆ LICA Contractor Magazine
 - ◆ Space Pen
 - ◆ Clean Fire New Member Discount
 - ◆ Petrocon Commodities Program
- ◆ Petrocon CAT Parts Replacement Program
 - ◆ Cooper Tire Program
 - ◆ Piston & Piston Kits
- ◆ Business & Family Legacy Planning
- ◆ MASA: Medical Transport Solutions

Agri Drain
CORPORATION
Smart Drainage System™

Add multi-level, automated, remote-control capabilities to Agri Drain's Inline Water Level Control Structures™ in pipe sizes up to 12"-diameter.

- Manage your system remotely on our Smart Drainage Site.
- Smart Drainage Site dashboard displays battery condition, valve position, water level, and set-points.

US Patent No. 6,715,508 B2
US Patent No. 6,784,234 B2
Canadian Patent No. 2,402,454
Canadian Patent No. 2,446,974

Water Level

Your Complete Manufacturer and Supplier of
Products for Water Management
800.232.4742 ■ www.agridrain.com



Inter-Drain

"Excellence by Experience"



Bower's Great Lakes Inter-Drain, Inc.

Your Dealer for Inter-Drain Plows, Trenchers and Parts

1912 W McPherson Hwy, Clyde, OH 43410

419-547-2379

sales@bowersglid.com

www.greatlakesinterdrain.com

2021 Board Member Meeting Attendance

Area/Director	Jan	March	June	Aug	Dec
Pres Steve Vis	C				
VP Stu Frazeur	C				
Tres Mark Olsen	C				
Chrmn Mike Lehmann	C				
East Jay Engles	C				
East Dallas Loken	C				
East Mark Morreim	C				
East Karlen Nelson	C				
West Everett Garlisch	C				
West Open] _____					
West Brad Herickhoff	C				
West Open] _____					
Retired Open					
Assc Tim Dahl	C				
Ex Dir Kevin Bakken	C				
Ex Dir Jeanie Bakken	C				

A = Absent P = Present C = Cancelled Meet

Notice

We have openings for board members from both the East and West Area. If interested, please contact one of the current board members or one of the executive directors. This is one way you can be an integral part of your organization and help plan events.

Cont'd from Page 15

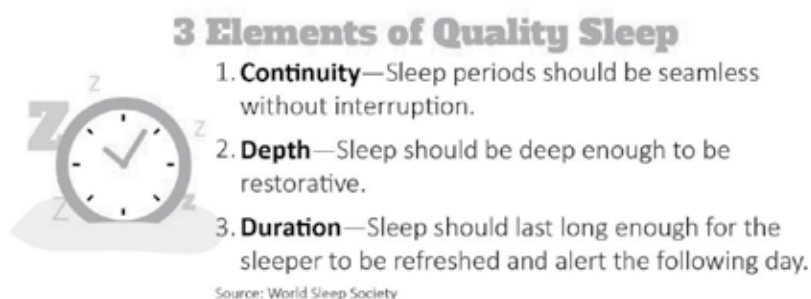
Prioritize Your Sleep

Sleep is just as important as nutrition and exercise to help you function at your best. But when you're juggling work, kids and everyday life, a good night's sleep may seem unattainable. In fact, 35% of people feel they don't get enough sleep.

Adults need seven to nine hours of quality sleep each night. In honor of World Sleep Day on March 19, consider the following tips to prioritize your sleep:

- Avoid drinking caffeine within six hours of bedtime.
- Stop watching television and using your phone and other electronic devices for at least 30 minutes before bedtime.
- Create a relaxing bedtime routine to help your brain unwind and recognize that it's time to sleep.
- Keep your bedroom cool, dark and quiet.

If you're regularly feeling tired upon waking up, or throughout the day, you may be experiencing some underlying issues. Talk to your doctor about any concerns.



Properly Cleaning Your Earbuds

Listen up! Earbud use can lead to health issues such as excessive earwax, ear pain, ringing in the ears or infections. Dirt, debris and sweat can build up over time, so it's important to clean earbuds after each use. Cleaning can also maintain sound quality and extend the life of your earbuds.

First, disconnect your earbuds. Then consider the following cleaning options:

- **Soft cloth**—If you have single-piece earbuds, slightly dampen a cloth with fresh water and wipe clean.
- **Alcohol wipes**—To clean and disinfect earbuds, use an alcohol wipe.
- **Soap and water**—A simple solution of antibacterial soap and warm water paired with a soft cloth work well. If you need something more potent, use rubbing alcohol.
- **Small brush**—A clean toothbrush or cotton swab can clean mesh grilles and other small grooves.

After cleaning your earbuds, allow them to dry completely before placing in a storage bag or case. If you're experiencing ear pain, talk to your doctor.



Chicken and Broccoli Bake

Makes: 8 servings

Ingredients

- 1 cup rice (uncooked)
- 10 ounces broccoli
- 3 cups chicken (cooked)
- 2 Tbsp. margarine or butter
- ¼ cup flour
- 2 cups chicken broth
- ¼ cup Parmesan cheese (optional)

Preparations

- 1) Cook rice in 2 cups of water.
- 2) Remove chicken off the bone.
- 3) Melt margarine in large saucepan. Add flour and stir.
- 4) Slowly add chicken broth to margarine and flour mixture. Stir to remove lumps and thicken.
- 5) Add cheese and stir.
- 6) Add rice, broccoli and chicken. Stir.
- 7) Put in a casserole pan and bake at 350 F for 30 minutes.

Nutritional Information

(per serving)

Total calories	219
Total fat	5 g
Protein	19 g
Sodium	492 mg
Carbohydrate	24 g
Dietary fiber	1 g
Saturated fat	1 g
Total sugars	1 g

Source: MyPlate



Stove Top Easy Cheesy Chicken Bake

1 Pkg Stove Top Dressing

1-1/2 Lbs Chicken—Cut into Bite Size Pieces

1 Pkg (14 Oz) Frozen Broccoli Florets

1 Can Cream of Chicken Soup

1/2 C Milk

1-1/2 C Shredded Cheddar Cheese

Heat oven to 400°.

Prepare stuffing as directed on package.

Combine remaining ingredients; spoon into 13x9-inch baking dish sprayed with cooking spray. Top with stuffing.

Joke of the Day!

It is hard to find a joke today without a dirty word or two in it, but Here is one:

Three trees & A Woodpecker

Two tall trees, a birch and a beech, are growing in the woods. A small tree begins to grow between them, and the beech says to the birch, "Is that a son of a beech or a son of a birch?" The birch says he cannot tell, but just then a woodpecker lands on the sapling. The birch says, "Woodpecker, you are a tree expert. Can you tell if that is a son of a beech or a son of a birch?"

The woodpecker takes a taste of the small tree and replies, "It is neither a son of a beech nor a son of a birch. It is, however, the best piece of ash I have ever poked my pecker into.

Now wipe that smile off your face and pass it on....



Port Industries

Quality Products and Service since 1968




Contact us with all of your drainage equipment needs



Authorized Dealer

(573) 769-3338

www.PortIndustries.com

PortIndSales@gmail.com



Country Enterprises INC.

INTAKE COVERS

CUSTOM MARKING FLAGS

TILE CUTTERS & PROBES

PARTNERS 3
innovation • quality • service

1-800-349-8752
www.countryent.net




MNLICA WEB
www.mnllica.org

Check out the MNLICA web-site:

Membership: Benefits: Applications: Directory & Map
Scholarship Application: Ladies Activities
Newsletter Archive: Contact Information
Calendar of Events: Legislative Issues: National LICA

Check out Facebook:
<https://www.facebook.com/MNLICA/>

REVOLUTION DITCHER™



CRARY
Manufacturing Farm Profitability™
507.249.3176 | West Fargo, ND
CRARY.com

Facebook, Twitter, YouTube, Instagram icons

WARNING: Cancer and Reproductive Harm
www.P65Warnings.ca.gov

The Revolution Ditcher by Crary® is setting the standard for efficient **water management**, making it easy to **move dirt** to create or maintain waterways, ditches and terraces.

THROWS DIRT UP TO 165'


Thank you for your business!!

From the Families of Timewell Drainage Products
Your Source for Single Wall, MaxFlex Dual Wall and MaxFlo Dual Wall

TIMEWELL
DRAINAGE PRODUCTS

Mike Loscheider 612-247-8900
800-720-8453
timewellpipe.com

Facebook icon, Twitter icon

The logo consists of the word "FRATCO" in a bold, sans-serif font, enclosed within a dark rectangular box.**FRATCO**A black and white photograph showing the silhouettes of three people wearing hard hats. They are standing outdoors, looking towards a bright light source, likely the sun, which creates a strong lens flare. The person on the left is pointing towards the center. The person on the right is holding a clipboard. The person in the center is partially obscured by the sun's glare.**DOING THE****RIGHT THING.**A vertical, close-up view of a metal spiral binding, showing the coiled wire.

It doesn't come easy for everyone. But at Fratco, it's what has made us a leader in the drainage industry for almost 100 years. From precise manufacturing processes to high-quality products, top-notch customer service and everything in between, we prioritize making things right. Because to us, there's no other option.

**IF IT HAS TO BE RIGHT, IT HAS TO BE FRATCO.****FRATCO.COM**

OFFICERS**PRESIDENT****Steve Vis**

Vis & Van Dyken Drainage LLC
685 30th Avenue
Beaver Creek, MN 56116

VICE PRESIDENT**Stu Frazeur**

Stu Frazeur Tiling
2776 200th Street
Canby, MN 56220

TREASURER**Mark Olsen**

Big Woods Excavating LLC
12825 190th Street East
Nerstrand, MN 55053

CHAIRMAN of the Board**Michael Lehmann**

Air-Row Surveying LLC.
19184 State Highway 22
Mankato, MN 56001

MNLICA Executive Directors

Kevin and Jeanie Bakken
9600 South Dennison Blvd.
Northfield, MN. 55057
mnlica2@gmail.com
Phone; 507-645-6905
Kevin Cell: 612-328-2874
Fax: 507-645-1654

NATIONAL LICA

3080 Ogden Avenue
Suite 300
Lisle, IL. 60532

AREA STATE DIRECTORS**East Directors:****Jay Engles**

Gustafson Drainage LLC
51738 Eagle Lane
Lake Crystal, MN 56055

Dallas Loken

Loken Excavation & Drainage Inc
3695 Hoffman Drive Northwest
Owatonna, MN 55060

Mark Morreim

Morreim Drainage Inc.
71610 263rd Street
Albert Lea, MN

Karlen Nelson

Nelson Brothers Tiling LLC
43480 County Road 4
Nicollet, MN 56074

West Directors:**Everett Garlich**

Eiden Farm Drainage
35127 746th Avenue
St. James, MN

West Board Member Open

Brad Herickhoff

Ag Tech Drainage, LLC
40536 US Highway 71
Sauk Centre, MN 56378

West Board Member Open

Retired Open**Associate:**

Tim Dahl
- ADS

**2021 MNLICA UPCOMING EVENTS**

Web-site: www.mnlica.org

June 24th, 2021—Board Meeting—TBD

July 27th – 31st, 2021 – National LICA Summer Meeting – Niagara Falls, NY – Sheraton Niagara Falls

August 12th, 2021 Board Meeting—Best Western Plus New Ulm 6:00 p.m.

September 10th or 17th, 2021—Scholarship Event—TBD

December 2nd, 2021 Board Meeting—Best Western Plus New Ulm 5:00 p.m.

January 12th, 13th, 14th, 2022—MNLICA Winter Convention

February 2022—MSHA Class Dennison MN





MNLICA

9600 S. Dennison Blvd.
Northfield, MN 55057

PRSRT STD
US POSTAGE PAID
OWATONNA MN
PERMIT NO 41

Address Service Requested

THE LICA CREED

*Land, the foundation of the nation,
the basis of all wealth,
the heritage of the wise, the thrifty and prudent,
the poor man's joy and comfort,
the silent partner of man,
the producer of food, fiber and fuel,
the basis of factories,
the foundation of banks.*

*All that man builds is from the land.
We often take it for granted, or even abuse it,
and yet many unthinkingly and unknowingly pass the land by.
What man finally does with the land
will be the deciding factor in his survival.*