



MNLICA

NEWS

Land Improvement Contractors of America • Minnesota Chapter

SCHOLARSHIPS

Apply now to NLICA and MNLICA

Make sure all MNLICA high school seniors (this includes employees children and your grandchildren) apply for the 2-one thousand dollar MNLICA scholarships and the National LICA 8-five hundred dollar scholarships by March 2012. Get forms on-line or at the MNLICA office.

PRESIDENT

Kevin Bakken

VICE PRESIDENT

Mark Morreim

CHAIRMAN OF THE BOARD

Doug Gysbers

TREASURER

Doug Gysbers

SE BOARD MEMBERS

Chuck Wingert

Mark Gregor

Don Loken

Don Estrem

Kevin Ellingson

Darrin Anderson

Bruce Holst

SW/N BOARD MEMBERS

Karlen Nelson

Otto Templin

Greg Walsh

Stu Frazeur

Justin Wildfeuer

Doug Breberg

RETIRED

Roger Molenaar

ASSOCIATES

Kent Rodelius

James Becvar

EDITOR

Nordis Estrem

MNLICA ANNUAL MEETING NOTICE
JANUARY 16, 2012
6:00PM
BEST WESTERN HOTEL
NORTH MANKATO

Page 11

MNLICA HAD A FUN and BUSY 2011
COME JOIN US at the 2012 STATE CONVENTION
January 15-17, 2012
Best Western Hotel, North Mankato





GREETINGS From Your PRESIDENT

November 17, 2011

To my fellow MnLICA members:

Here we are once again in the fall rush to get all the work done that we can before freeze up. Let's remember to slow down and stay organized. Safety is the number one issue.

The winter convention is coming up fast. Please attend! Reasons why:

- Attending helps support LICA
- Nordis has some very good classes lined up
- It's good to see fellow LICA members and meet new people.
- There will be a tradeshow and auction
- You might learn something
- Camaraderie, friendship
- If you're not there you might get elected for something
- Get away from the wife or spend time with the wife
- Don't have to drink and drive (you'll have a room)
- It will be fun

Please attend!

Have a safe fall and we'll see you at the convention in January at the Best Western in North Mankato.

Respectfully submitted,
Kevin Bakken
President

MNLICA Web-Site; www.mnllica.org
Or e-mail Nordis Estrem at
dnestrem@frontiernet.net


TRACK II
 CORPORATION
 "Our 33rd Year"

(800) 633-2332
(952) 469-3456
www.track2corp.com
 21860 Kenrick Ave.
 Lakeville, MN 55044

After Hours Call:

Steve DeBaun (651) 681-1672
Ron Lunn (952) 432-9321
Al Droge (218) 543-6644

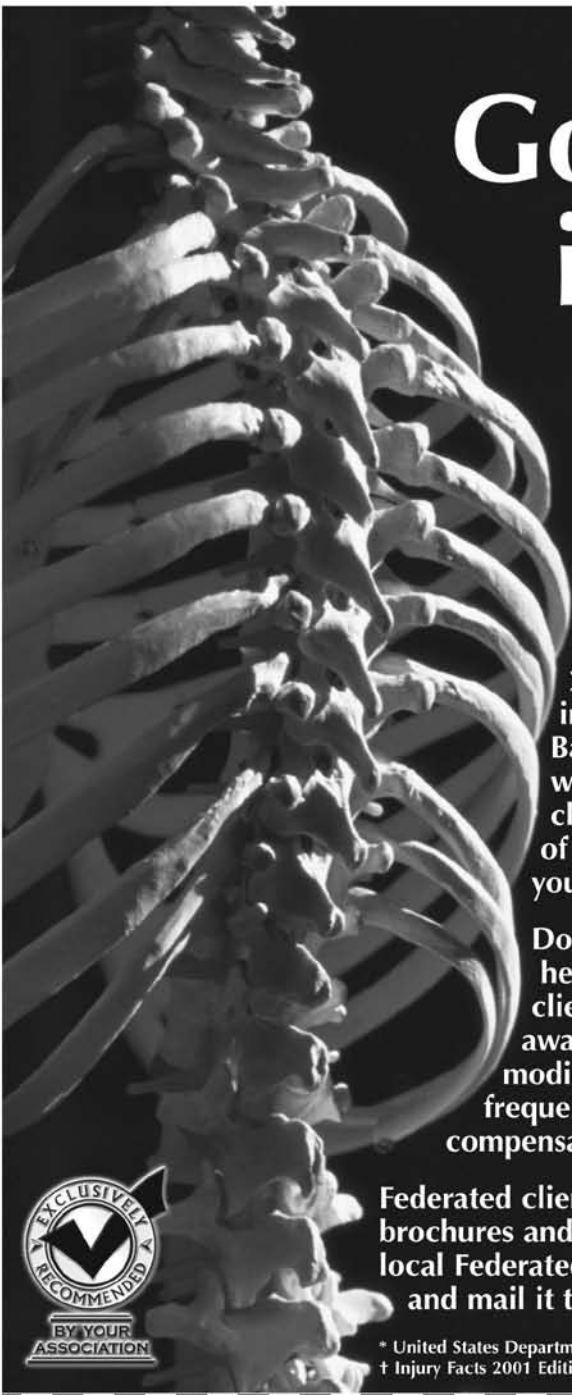
**Call "Your Source" for all your
Construction Machinery &
Replacement Parts Needs!**
And if we don't have it...we'll get it!!!

We furnish the ultimate combination:
** Integrity*
** Experience * Quality*
** Providing the economical alternative*

BUY - RENT - LEASE

FEATURES

Presidents Report	2
Safety: Let landowner know your surveying	5
Recipe: Best Baked Corn	
Safety: Operate a Snow Blower safely	6
JUST GET ONE	7
NLICA Winter Convention information	8
New Benefit :Hotel Savings Card	
MNLICA State Convention registration	9
MNLICA SSTS Class Registration	10
ANNUAL MEETING NOTICE	11
101 Networking—11 tips	
Chive-ham Brunch Bake	
Light Squared GPS again J. Peterson	12
NLICA Ladies Raffle (14 carat Diamond Necklace)	
MPCA Diesel Grant Funding information	13
Directors Report	14
Grandparents—one liners	
Membership Application	15
Member Benefits	
LICA's Mission Statement	16
History of Veterans Day	17
Upcoming Events	19



Got a PAIN in the back?

Get BackTalkSM

Federated clients have a great remedy. Statistically, 20 percent* of workplace-related illnesses or injuries involve the backs of your employees. Back injuries are the most frequent cause of missed workdays, and over \$37 million† are spent yearly on claims for those injuries. As an employer, your share of these costs may be having a serious impact on your company's financial health.

Don't just deal with back injuries after they happen—help prevent them. Created especially for Federated's clients, BackTalkSM—a back injury prevention awareness program, can help you change the attitude, modify the behavior, and reduce the severity and frequency of your employees' back-related workers compensation claims.

Federated clients can ask their local representative for sample brochures and posters. For your free BackTalkSM kit, contact your local Federated representative. Or, complete the coupon below and mail it today.



* United States Department of Labor, Bureau of Labor Statistics
† Injury Facts 2001 Edition, National Safety Council



Business Name _____

Contact Person _____

Title _____

Street Address _____

City/State/Zip Code _____

Telephone Number _____

Federated Policy/Account Number _____

Mail to: Owatonna Stockroom, Federated Insurance, P.O. Box 328, Owatonna, MN 55060



CATERPILLAR

We don't just promise

ZIEGLER DELIVERS

At Ziegler, we have so much confidence in our people and our performance that we promise extraordinarily fast response times and the highest quality workmanship. And we back it up with guarantees:

GUARANTEED WORKMANSHIP

We GUARANTEE we'll repair your equipment right the first time. All our maintenance and repair work carries a FREE one-year labor warranty.



GUARANTEED RESPONSE

We GUARANTEE we'll get to your worksite within three hours – two hours in the Twin Cities and Des Moines metro areas. If we can't, our travel charges are FREE.



GUARANTEED AVAILABILITY

We GUARANTEE we'll have any part within 24 hours of your expected delivery time. If we don't, the delivery charge to your location is FREE.



**Ziegler delivers.
Guaranteed.**

Some restrictions apply. For complete details, contact your Ziegler representative or nearest facility or visit www.zieglercat.com/guarantees.

800.352.2812

Brainerd • Buhl • Columbus • Crookston • Duluth • Fergus Falls • Marshall
Minneapolis • North Mankato • Rochester • Shakopee • St. Cloud

ZIEGLER 

www.zieglercat.com

SAFETY WHILE SURVEYING A JOBSITE

By Mike Lehman, AIR-ROW FARM LAND

I went out this afternoon to finish a survey job.

I crossed two adjoining tracts that the land owner requesting the work said he had contacted.

After about 20 minutes running a preliminary line one of the elderly neighboring land owners came up on his 4 wheeler very rattled / upset.

He asked why I was there and why I was trespassing. I explained the land owner requesting the work

had said he contacted the land owners (last spring). I apologized if he did not contact him.

He said I should have asked and repeated it several times.

He then said that he saw me in his scope, and he was just target practicing right where I was surveying.

He said he caught me in the corner of his eye and fortunately did not shoot. I then apologized for upsetting him, several times.

This evening, I purchased a revolving utility magnet light and 6 feet of reflective tape for my JD Gator.

DEEPEST SYMPATHY

FAMILY OF

LEROY SPRINGER

October 27, 2011

He worked for Kregel Brothers

Daughter works for Massap Electric

Mapleton, MN

BEST BAKED CORN

1-Cup Milk 2- Tablespoons butter
1-Tablespoon sugar 2-Tablespoons flour
1-15oz.can whole corn (drain well)
2-eggs (well beaten)
Boil 3/4 cup of milk with butter and sugar.
Dissolve flour in 1/4 cup milk.
Pour flour mixture into milk mixture to make a white
sauce.
Add to drained corn in a 1 to 1-1/2 quart baking dish or
Pyrex loaf pan.
Mix in eggs.
Bake 1 hour at 400 degrees.
Serves 4

NORTHLAND TRENCHING EQUIPMENT INC.



Inter-Drain 2050 GP

Your #1 Source For New & Used Trenchers & Plows

*Trimble Laser and GPS Systems

* Huge Parts Inventory

* Service

* Rentals

*Check out our website for all the
latest Inventory and info...
www.northlandtrenching.com
E-mail: nte@hickorytech.net*

Corporate Office:

12929 410 Ave. Waseca, MN 56093

Phone: 507-835-4214 Fax: 507-835-2032

Eastern Division:

3578 N. State Road 59 Brazil, Indiana 47834

Phone: 812-835-2900 Fax: 812-835-2535

OPERATING SNOW BLOWERS

By Carolyn Mason

More than 5,000 emergency room visits and more than 1,000 finger amputations per year are due to snow-blower accidents. Here are tips that can help you avoid injury.

Read the instruction manual. Prior to using a new snow blower, read the manual to learn about safety hazards. Reread the manual before attempting to repair or maintain the blower.

Never stick your hands or feet in the blower. If snow becomes impacted, stop the engine and wait at least five seconds. Use a solid object to clear wet snow or debris from the chute. Beware of the recoil of the motor and blades after the machine has been turned off.

Do not leave the snow blower unattended when it is running. Shut off the engine if you must walk away from the machine.

Add fuel before starting the snow blower. Never add fuel when the engine is running or hot. Wait until the engine cools before refueling. Avoid spillage by using a non-spill container with a spout.

Protect yourself from carbon-monoxide poisoning. Start and run gasoline-powdered snow blowers outside, rather than in enclosed areas.

Don't wear loose pants, jackets or scarves, which can get tangled in a snow blower's moving parts.

Wear earplugs or other hearing protection, especially when operating gas-powered models.

Do not disable your snow blower's operator presence control. Most snow blowers built since 1975 have this feature, which causes the machine to stop when the user releases the controls.

Do not use the snow blower on steep slopes. Use extreme caution when clearing snow from mild slopes, especially when changing directions.

Never operate a snow blower without good visibility or light.

Never operate a snow blower if you are under the influence of alcohol.

VETERAN'S DAY, November 11

We remember our veterans, the men and women who gave of themselves so that each of us can enjoy our freedom. The 11th hour of the 11th day of the 11th month signifies the time the guns fell silent on WWI. This is a time for all of us to pause and remember those heroes who so courageously gave of themselves, not only from WWI but in all wars

Ask us about advertising in the
MnLICA Newsletter
Today!



Agri Drain
CORPORATION
Your Partners in Water Management


35
YEAR
ANNIVERSARY

We offer America's most complete selection of water management products for wetlands, ponds, lakes, controlled drainage, and subsurface irrigation. Along with tools, survey and safety equipment, and many hard to find items.


PO Box 458 - 1462 340th Street - Adair, IA 50002
Fax: 1-800-282-3353 - Email: info@agridrain.com
www.agridrain.com

For a FREE catalog or to place an order, call 1-800-232-4742.


Mention Wetlands, Drainage or Permits and Someone will Mention Rinke Noonan.



KURT DETER



JOHN KOLB



GARY LEISTICO

Landowners are becoming increasingly aware of the difficulties in dealing with wetlands, drainage and acquiring permits. The DNR, NRCS, Corps of Engineers, county and local governments all may have interests that must be addressed.

Our work involves wetlands, drainage, and other water related issues, permits — areas of law that are constantly changing and becoming more specialized.

If you're facing a challenge in any of these areas, or are wondering if you could benefit from legal help, call Kurt, John or Gary at (320) 251-6700.

RINKE NOONAN
ATTORNEYS AT LAW

SUITE 700, NORWEST CENTER, 400 FIRST STREET SOUTH,
ST. CLOUD, MINNESOTA 56301 • (320) 251-6700

RECRUIT A NEW MEMBER TODAY!

MNLICA membership provides a stronger united voice on behalf of our industry.

MNLICA provides services and programs which you could not do on your own without spending more money and time. Such as MSHA, OSHA, Competent Person and other trainings.

MNLICA membership provides you with a professional effective hearing in government on state and federal levels.

MNLICA provides a great networking group throughout the state and USA.

MNLICA provides your company with resources for reduced costs on products your machines use.

WE NEED YOU TO ASK ONE PERSON TO JOIN TO-

HELP MILITARY FAMILIES

What can you do to help? Is there a military family near you? Volunteer to watch their child/children while they run their errands. Shovel the driveway or sidewalk in front of their house or apartment. Fix something broken or in need of repair. Invite them to a fun function with your family. Host a neighborhood get together ask everyone to bring pictures of their extended families and talk about where they are and what they are doing. Give them support!! You may have to volunteer more than once before they will accept your willingness to help. Be sincere! Their spouse or extended family is doing their part for you and our country.

Thoughts by 90 year old Reginna Brett

My odometer rolled over to 90 in August, so here are some of my thoughts.

Life isn't fair, but it 's still good.

When in doubt, just take the next small step.

Life is to short to waste time hating someone.

Your job won't take care of you when your sick. Your family and friends will. Stay in touch.

**Join us at the
2012 State Convention!**

Wisconsin Plastic Drain Tile Corp.

Manufacture of plastic pipe and fittings for drainage.

800.362.6642



**201 W. PLYMOUTH STREET
JEFFERSON, WI 53549**

Toll Free: 1-800-362-6642
Fax: 920-674-2782
Email: dluca@draitile.com

SIZES 3" – 48"
*SINGLE WALL
AND DUAL WALL*

FITTINGS AVAILABLE IN ALL SIZES

Free delivery within 300 mile radius.
Speedy delivery— 24-48 hours in most cases.
Good customer service.

1% of sales goes to American Cancer Society support
of Breast Cancer Awareness.

ph 920-674-3332 • www.draitile.com
Manufacturer of quality drain tile since 1972.

**NLICA WINTER CONVENTION
FEBRUARY 7-12, 2012
DoubleTree Hotel Downtown
San Diego, CA.**

This should be a great time to go to Sunny Warm and Friendly California. The registration form is on the National LICA web-site. The reduced registration cost is \$250.00 before January 13, 2012. Reduced hotel rates need to be made by January 7, 2012 at \$129.00 (plus tax). Make your room reservations by calling 800-222-8733, Room block LICA 2012 National Convention.

There will be FUN tours for all to enjoy. Tuesday, February 7 from 1:45-5:00pm you can tour the USS Midway. Wednesday, February 8 from 9:30am to 2:30pm tour the San Diego Zoo. Thursday, February 9 from 12:00pm to ??? 18 holes of Golf. You can rent clubs there. Profit from this event will go to the NLICA Scholarship Fund. Saturday, February 11, Mirimar Speed Circuit from 1:45-5:00pm.

Meetings will start on Thursday, February 9, 2012 at 8:00am and conclude on Friday, February 10, 2012 with a 7:00pm caterpillar dinner.

LICA Hotel Savings Card

The LICA Hotel Savings Card Program from CLC Lodging simplifies lodging administration while saving 20-40% off hotel rates. This card improves your bottom line whenever you and your employees travel for business. There is no advanced booking required and no annual fees or minimum usage requirements.

Call toll-free at 1-866-857-9747, Option 1, or visit online at www.CheckINNcard.com to sign up for LICA's Hotel Savings Card program from CLC Lodging today! When you join, enter the key code "LICA" and the sign-up fee is waived—a \$9.95 value!
MEMBERS USE THESE BENEFITS OR LOOSE THEM!!!



MnLICA CONVENTION REGISTRATION
 BEST WESTERN HOTEL AND RESTAURANT
 1111 Range Street, North Mankato, MN 56003
 January 15th - 17th, 2012 Phone: 507-625-9333

Contact Name: _____
 Company: _____
 Address: _____ City, State and Zip: _____
 Phone Day: _____ Phone Evening: _____

<i>General Registration</i>		Members & Associates	
<i>Discount Registration - Postmarked by Dec 11, 2011</i>		Attending on January 15th - 17th, 2012	
Member: Contractors, Associates, Gov't Employees, Consultants	\$195.00	\$250.00	includes the Sunday evening and Monday and Tuesday events at the MNLICA Convention. Members attending the SSTS class on January 18, 2012 there will be an additional charge, see SSTS form.
Member Spouse:	\$150.00	\$200.00	
Non-Member:	\$275.00	\$325.00	
Children	Cost: \$50.00		Under 2 years old - Free
Print Names for Badges (Please write legibly)	Owner or Employee		Total
Total Convention Fees			

MNLICA'S Annual Auction will be held on Monday, January 16th, 2012 to raise money for our Political Action fund, please provide an auction item that has a suggested minimum value of \$25.00 or more or a cash donation.

Hotel reservations must be made for discount by December 30, 2011 Best Western Hotel Phone: 507-625-9333 Address is 1111 Range Street North Mankato, MN 56003 Room Rates \$64.00 Queen or King	Make checks payable to: MNLICA Convention Fund PLEASE NOTE NEW MAILING ADDRESS: Mail to: MNLICA 9600 S. Dennison Blvd. Northfield, MN 55057-4547 Phone: 507-645-6905 or 507-789-5725 Fax: 507-645-1654 or 507-789-6033 E-Mail: bakken4957@gmail.com or dnestrem@frontiernet.net
---	---

Registration Policy: Only individuals registered and with a badge may attend convention events. The spouse/guest of a registered member need not register to share hotel accommodations, but must register to participate in convention programs or functions. **No registration will be processed without payment.** A \$30.00 processing fee will be incurred on cancellations postmarked before December 31, 2011. Cancellations postmarked after December 31, 2011 will be subject to a 50% reduction in refund. All requests must be in writing. Meals will be on an "availability basis" for on-site registration.



MNLICA SEPTIC CERTIFICATION
Best Western Hotel & Restaurant
1111 Range Street
North Mankato, MN 56003
JANUARY 18, 2012

MNLICA will offer a Septic Certification Class at the state convention on Wednesday January 18, 2012 from 8:30 a.m. to 3:30 p.m. The cost of the class will be \$180.00 per person including break and lunch. If you sign up for the convention, the cost will be \$150.00 per person.

Contact Name(s) _____

Company _____

Address _____

City, State & Zip _____

\$180.00 Registration per person \$ _____

\$150.00 Registration per person (with convention registration) \$ _____

\$250.00 Registration per person non-member \$ _____

Make checks payable to MNLICA Convention Fund, Mail to

PLEASE NOTE NEW ADDRESS:

MNLICA
9600 S. Dennison Blvd.
Northfield, MN 55057-4547
 Phone: 507-645-6905

Registration Policy: Only individuals registered and with a badge may attend convention events. No registration will be processed without payment. A \$25.00 processing fee will be incurred on cancellations postmarked before December 30, 2011 Cancellations after December 30, 2011 will be subject to a 50% reduction in refund. All requests must be in writing.

This is your official notice of the MNLICA ANNUAL MEETING

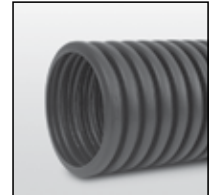
When: January 16, 2012
Where: Best Western Hotel,
1111 Range Street, North Mankato
Time: 6:00 PM

NETWORKING 101

11 Tips for making connections
 By Carol LaWell

Turns out the best way to market your business may take time more than money. Here are some effective networking techniques.

1. Word of mouth, you must see a company's name 27 times before they remember it.
2. Chair an event, getting involved in a community nonprofit event not only shows good will, but it circulates your name.
3. Put a talk together, embrace the topics you're knowledgeable about and give a talk to local business men or a club.
4. Do the right thing, Integrity and trust are basics when it comes to networking.
5. Go where clients go, you may establish new relationships.
6. Get your name out, put your **LOGO** on everything you use, shirts, vehicles, pens, jackets and hats, etc.
7. Use FaceBook, you may think this is foolish, but you can get your business name out thru visiting with others here.
8. Be personal, in networking, face to face works best. If you've only talked on the telephone or internet, invite them to lunch to discuss work.
9. Spend money on meals, there are very few other ways to captivate someone's time for an hour or two.
10. Don't have a motive, potential customers can't think all you want is the sale out of the deal. Be genuine and sincere.
11. Do a little bit more, always think of ways you can help others, clients and potential clients. Be the person you can always count on to do a little bit more than what is asked of you. Always be thoughtful and considerate.



Manufacturing Quality Drainage Systems Since 1972

Contact James Beevar at **507.438.7676** or
james@centurypipe.com for more information.

800.545.9546

www.centurypipe.com

Century Plastics, Inc.™ is a registered trademark of Advanced Drainage Systems, Inc.
 © 2011 Advanced Drainage Systems, Inc. (AD070111) 04/11

CHIVE-HAM BRUNCH BAKE

- 1/2-cup chopped onion
- 1-tablespoon butter
- 1-can (5 oz) chunk ham (drain)
- 1- medium tomato (chop)
- 2-cups biscuit/baking mix
- 2-eggs
- 1/2-cup Swiss or Cheddar cheese (4-oz)
- 1/4-cup milk
- 1/4-teaspoon salt
- 1/4 teaspoon dill weed
- 1/8-teaspoon pepper
- 3-tablespoons minced chives

In a skillet, sauté onion in butter until tender. Stir in ham and tomato; set aside. In a bowl, combine biscuit mix and water, mix well. Press onto the bottom and 1/2 inch up the sides of a greased 9x13 inch pan at least 2 inches deep. Spread the ham mixture over crust; sprinkle with cheese.

In a bowl, beat the eggs, milk, dill. Salt and pepper; pour over cheese. Sprinkle with chives.

Bake, uncovered, at 350 degrees for 25-30 minutes or until inserted knife near the center comes out clean.

Serves 8.

LightSquared v. GPS – again.**John Peterson, LICA Director of Government Relations.**

16 NOV 2011/jwp

Since you folks alerted me to the GPS concerns that bringing high-speed internet to rural America by a company called LightSquared might cause, and how its technology could disrupt GPS systems throughout the US, I have tried to follow the issue and report when there was something to say. Recently I ran across another article that caught my eye entitled *LightSquared, GPS on collision course* by C. Boyden Gray (1). Gray served as White House counsel in the George H.W. Bush administration, and given the title of the article I thought Gray probably was on the GPS side of things. I was quite surprised at the article after reading it. I won't repeat it all, but will use much of what Gray wrote. I don't know if Gray is now a lobbyist for helping spread high-speed internet technology. I will check.

"Good fences make good neighbors. No matter how well you get along with the neighbor next door, it's good to know where his property ends, and yours begins. And good fences are essential for more than just real estate; other areas of the law depend on laying down clear, enforceable boundaries between one company's intangible "property line" and another's. Perhaps the best example of this is the communications spectrum. For more than 80 years, the Federal Communications Commission (FCC), and its predecessor the Federal Radio Commission, has fixed the boundaries between users' respective shares of the spectrum, and policed the spectrum to ensure that the users have obeyed those "fences."

Spectrum allocation is by and large a low-key issue. But in recent months, one dispute among users of adjacent spectrum space has become particularly heated. LightSquared Inc. proposes to build a telecommunications network combining both satellites and traditional land-based communications towers. LightSquared would help to bring broadband Internet access to millions of rural Americans, an important service for heartland residents who find themselves on the wrong side of a persistent "digital divide" between broadband "haves" and "have-nots." And it would help close the gap between the US, which ranks 15th in broadband adoption, and more technologically developed nations.

The FCC approved LightSquared's network in 2005, and until recently the proposed network was not controversial. But in late 2010, the US GPS Industry Council (USGIC—an advocacy group promoting the satellite location technology that now serves countless cars, phones, and other devices, including those used by most LICA Contractors) abruptly began to assert that LightSquared's network would "interfere" with GPS communications, which occupy the adjacent spectrum space.

As a matter of regulatory procedure, USGIC's belated complaints were dubious: The GPS has known about LightSquared's proposal since 2001, and the FCC approved it in 2005. Nevertheless, it attracted virtually no criticism regarding GPS; only one company briefly raised the issue in 2001, but it ceased to press the point long before the FCC's 2005 approval order. But perhaps, even more important, the GPS industry's public campaign against LightSquared relies upon a fundamental misperception: To the extent that LightSquared's and GPS activities would be incompatible, it is not because of malfeasance on LightSquared's part. Quite the contrary: GPS communications spill over into LightSquared's share of the spectrum (I certainly did not know that. That I will check.).

Until now this has not been a problem because LightSquared has not actively used its spectrum. Only when it became evident that LightSquared would actually make its proposal a reality, and after the company had invested \$1 billion, did LightSquared face a public campaign, before both the FCC and the court of public opinion.

In this controversy, some have argued that LightSquared improperly lobbied the White House to promote its cause. But Gray's focus is not on that dispute, but to focus on the regulatory issues. And in that respect he says there is no serious dispute: Critics raised no concerns regarding LightSquared's effects on GPS for nearly a decade. Only after LightSquared received FCC approval, and invested vast sums of capital in the project, did GPS begin to complain, and about problems of GPS's own making.

LightSquared has offered to voluntarily shoulder much of the burden for identifying the full scope of GPS's technological problem. But the FCC itself warned that accountability rests "not only on new entrant's but on incumbent users," namely GPS, "who must use receivers that reasonably discriminate against reception of signals outside their allocated spectrum."

In other words, GPS bears more than a little responsibility to contribute to a solution for a problem it helped create. It is unfair to ignore the clear public record here going back to 2001, along with the reasonable investment expectation based on that record. To do so would discourage similar future investment in new telecommunications technology, just when we need more innovation, not less."

Well, that is certainly a side of the story I had not heard. How about you?

Reference.

1. Gray, C. Boyden, *LightSquared, GPS on collision course*, The Washington Times, Nov. 9, 2011, p A11.

2012 LICA Ladies Committee Raffle A Diamond Necklace

**14 carat White Gold Pendant
With 3 Diamonds on an
18" White Gold Chain**

**Contact Dee Liddle at
riddle@butler-bremer.com**

or call 319-275-4528

4-tickets for \$10.00

(need not be present to win)

Or contact Nordis Estrem

At dneestrem@frontiernet.net

Quality Concrete Drain Tile

- Competitive prices
- Full inventory of 5" to 48" Concrete Drain Tile
- Concrete T's, Intake Caps, Gates
- Fast delivery to your jobsite



Hector Tile Company, Inc.

721 South Main Street, Hector, Minnesota 55342

1-800-640-9910

THE NEXT GENERATION Is Now Here.



The New BRON Drainage Plow

Introducing the totally redesigned BRON self-propelled drainage plow. From the ground up, new features give you better control, better productivity and better comfort.

- Balanced Weight Distribution
- Improved Operator Visibility
- Electronic Digital Controls
- Ergonomic Cab Comfort
- FOPS/ROPS Certified
- Tri-Core Cooling System

BRON
POWER TO PERFORM



rwfbron.com
1.800.263.1060

EECH10723-S02-01

MPCA begins accepting applications for \$350,000 in clean diesel grant funding

The Minnesota Pollution Control Agency (MPCA) continues to utilize funding from the U.S. Environmental Protection Agency (EPA) to clean up diesel engines and help improve Minnesota's air quality. Nearly half of all air pollution in the state is created by transportation, and older diesel engines are a strategic target of both the MPCA and the EPA.

In recent years the MPCA has used state and federal funding to help reduce emissions on about 2,500 heavy-duty diesel engines in the state, beginning first with school buses and then public snowplows and dump trucks.

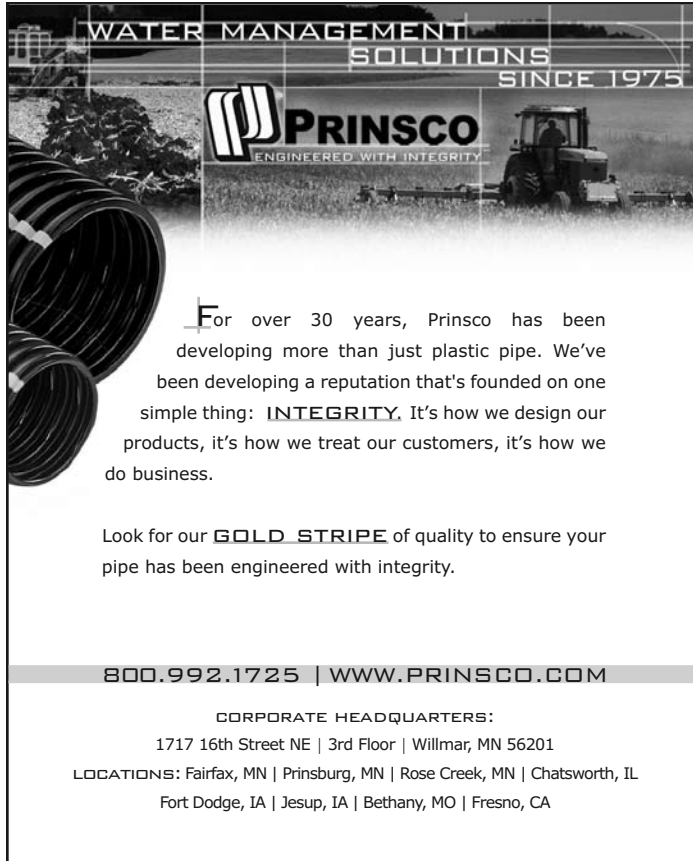
Beginning Nov. 14, the MPCA will be seeking applicants to use its federal Diesel Emission Reduction Act (DERA) grant funding to improve a wider range of fleets. Applications must be received by Dec. 22, 2011, and projects must be completed by Aug. 31, 2012.

The MPCA's new target will be public and private on-road and off-road diesel fleets older than 2007 that operate in Minnesota, with preference given to those operating in the seven-county Twin Cities metro area. Focus remains on the Twin Cities because air quality there is close to exceeding the national air quality health standards for fine particles and ozone.

"Diesel engines are essential due to their longevity and efficiency, but older diesels pollute significantly more than other vehicles in terms of fine particle pollution," MPCA Assistant Commissioner David Thornton said. "Overall the air quality is improving in the state, but more medical studies showing health problems at lower levels of air pollution prompted the EPA to make standards more strict in recent years," he explained.

The current Request for Proposal (RFP) will fund EPA-approved technologies, including idle reduction, emission controls, hybrid replacement and engine re-powers. Vehicle and equipment examples include on-road class 5 (16,000 lb. gross vehicle weight) or larger delivery trucks, off-road construction equipment, generators of 100-300 horsepower, and refrigeration units for delivery trucks.

The minimum award is \$10,000 and the maximum award is \$150,000. Vehicles and equipment must be in working order to be eligible for grant funding and no work can begin until a contract agreement is approved by the MPCA. For a copy of the Request for Proposal (RFP), contact Martina Cameron by email at contracts.pca@state.mn.us or call her at 651-757-2259. Applicants will need to give an email address to receive the RFP application and supporting materials electronically. The email subject line should read: "CR5220, Clean Diesel RFP." More information can be found online on the MPCA's [Grants/Financial Assistance for Clean Diesel Projects page](#).



WATER MANAGEMENT SOLUTIONS SINCE 1975

PRINSCO
ENGINEERED WITH INTEGRITY

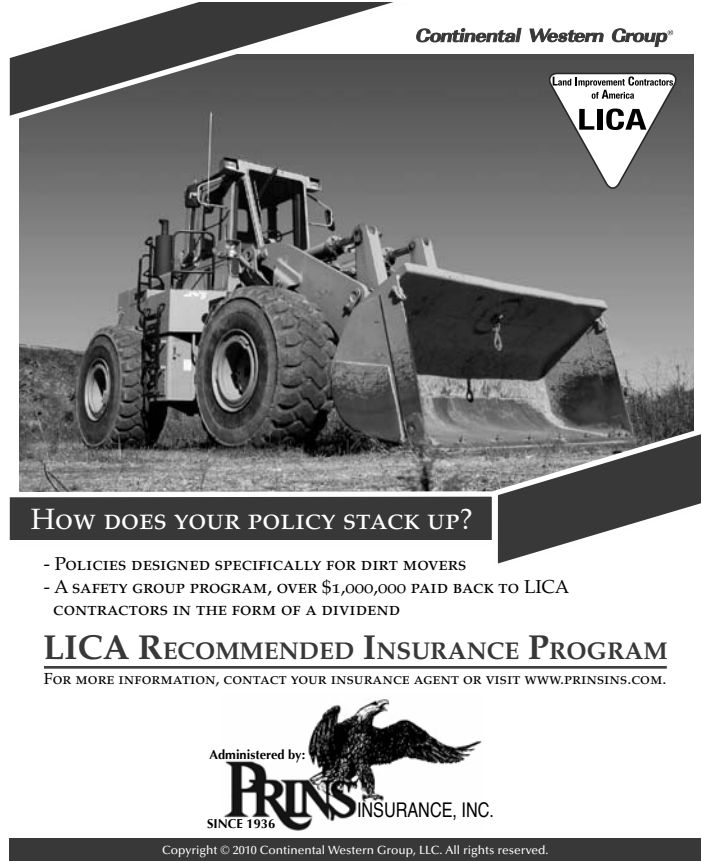
For over 30 years, Prinsco has been developing more than just plastic pipe. We've been developing a reputation that's founded on one simple thing: **INTEGRITY**. It's how we design our products, it's how we treat our customers, it's how we do business.

Look for our **GOLD STRIPE** of quality to ensure your pipe has been engineered with integrity.

800.992.1725 | WWW.PRINSCO.COM

CORPORATE HEADQUARTERS:
1717 16th Street NE | 3rd Floor | Willmar, MN 56201

LOCATIONS: Fairfax, MN | Prinsburg, MN | Rose Creek, MN | Chatsworth, IL
Fort Dodge, IA | Jesup, IA | Bethany, MO | Fresno, CA



Continental Western Group®

Land Improvement Contractors of America
LICA

HOW DOES YOUR POLICY STACK UP?

- POLICIES DESIGNED SPECIFICALLY FOR DIRT MOVERS
- A SAFETY GROUP PROGRAM, OVER \$1,000,000 PAID BACK TO LICA CONTRACTORS IN THE FORM OF A DIVIDEND

LICA RECOMMENDED INSURANCE PROGRAM
FOR MORE INFORMATION, CONTACT YOUR INSURANCE AGENT OR VISIT WWW.PRINSINS.COM.

Administered by:
PRINS INSURANCE, INC.
SINCE 1936

Copyright © 2010 Continental Western Group, LLC. All rights reserved.

DIRECTORS REPORT

Jeanie and Nordis have been busy getting all the details completed for the **January 15-17, 2012 State Convention and Tradeshow**. The **SSTS 6 hour training** will be on Wednesday, **January 18, 2012** at the Best Western Hotel. You should have received a mailing with all the classes and the Annual Meeting times and dates in the mail.

If you have not gotten one please call the office and we will send one out right away.

DON'T FORGET:

In January MnLICA will be hosting two out-state trainings. **On January 30-31, 2012 the 10 hour OSHA and a 2 hour DOT by the MN. State Highway Patrol** will be held at Sauk Centre. It will be hosted by Ag. Tech Drainage, LLC (Brad Herickhoff). This is a two day training.

The **MSHA one-day** training will be on **February 7, 2012** hosted by Kevin Bakken at his shop. See you there! Bring a potential member!

GRANDCHILDREN

Grandmas are moms with lost of frosting— Author Unknown

What a bargain grandchildren are! I give them my loose change and they give me a million dollars' worth of pleasure—Gene Perret

Grandmothers are just "antique" girls— Author Unknown

Perfect love sometimes does not come until the fist grandchild— Welsh Proverb

A grandmother is a babysitter who watches the kids instead of television— Author Unknown

Never have children, only grandchildren—Gore Vidal

Becoming a grandmother is wonderful. One moment you're just a mother. The next you are all-wise and prehistoric—Pam Brown

Grandchildren don't stay young forever, which is good because Grandfathers have only so many horsy rides in them—Gene Perrot

When grandparents enter the door, discipline flies out the window—Ogden Nash

Grandmas never run out of hugs or cookies— Author Unknown

MEMBERSHIP APPLICATION

Please enroll me as a Member of the Minnesota Land Improvement Contractors Association. I understand that I will receive all member benefits, and that they will begin as soon as my application is approved and My dues are received in the State Office. My membership fee includes membership in the National Land Improvement Contractors of America.

Name: _____

Spouse: _____

Company: _____

Address: _____

City,State,Zip: _____

Phone: _____

Fax: _____

Email: _____

Birthday (for Ins.): _____

Please enclose check payable in the appropriate amount as indicated below and mail this form to:

MNLICA, 9600 South Dennison Blvd.
Northfield, MN. 55057

Contractor Member	\$350.00
Associate Member	\$200.00
Retired Member	\$ 50.00

MEMBER BENEFITS

- 1.A D & D INSURANCE (MN. Only)
- 2.**CONTRACTOR CERTIFICATION PROGRAM**
- 3.NATIONAL & STATE NEWSLETTERS
- 4.**SAFETY MANAGEMENT PROGRAMS**
- 5.OSHA TRAININGS
- 6.MSHA TRAININGS
- 7.SSTS TRAININGS
- 8.**UPDATES ON THE NEWEST LAWS and REGULATIONS; State and National**
9. FELLOWSHIP with the Friendly Competitors
- 10.**DISCOUNT PROGRAMS** Local and National
- 11.LAND & WATER MAGAZINE
- 12.**STATE/NATIONAL SCHOLARSHIPS**
For your Children/Grandchildren and Employees Children
13. **SAFETY MANUAL WITH OSHA FORMS**
14. WINTER & SUMMER CONVENTIONS
15. **ACCESS TO DRUG & ALCOHOL TESTING**
16. REWARD PROGRAM FOR THEFT and VANDALIZED EQUIPMENT
17. **GAIN LEADERSHIP SKILLS**
18. ACCESS TO A WIDE VARIETY OF EQUIPMENT SUPPLIES & ADVICE IN AREAS OF BUSINESS
19. **SELF-INSURED WORK COMP PROGRAM ACCESS (EEP)**
- 20.BEYOND PERKS CARD (Discount's on line)
21. **RETIREMENT PROGRAM**
22. REPRESENTATION ON USDA COMMITTEE
23. **REPRESENTATION on the NATIONAL WATERSHED COALITION COMMITTEE**
24. REPRESENTATION on the COMMON GROUND ALLIANCE COMMITTEE
25. **REPRESTATION with MINNESOTA and WASHINGTON DC LEGISLATORS**
26. REPRESENTATION ON MPCA COMMITTEE
27. **HAVE FUN and NETWORK WITH OTHER CONTRACTORS AROUND THE U S A**
28. PETROCON (Savings on Lubricants, Tires, Oil, etc)

LICA MISSION STATEMENT

**To promote, perpetuate and improve
The proper use of our renewable natural
Resources for the benefit of all!**

COMPLETE TRACK SERVICE New and Used Undercarriage Parts

- FINAL DRIVE AND STEERING CLUTCH PARTS & REPAIR
- LINE BORING SERVICE
- DOZER BLADE PARTS AND REPAIR
- DRAGLINE AND BACKHOE REPAIR & PARTS
- CRUSHER ROLL REBUILDING
- COMPLETE UNDERCARRIAGE REBUILDING

ALL MAKES OF MACHINES Call For Prices
(507) 387-3121

Please include machine serial number



Crawler Welding, Inc.

319 Pintail Street • Mankato, MN 56001



Jct. Hwy. 169 So. & Hwy. 68, Mankato, MN

The Land Improvement Contractors of America

3080 Ogden Ave., Suite 300, Lisle, IL 60532 • (630) 548-1984 • Fax: (630) 548-9189

LICA Mission Statement

This statement was proposed by the group meeting in Rochester last July.

LICA serves its members and state chapters by strengthening their capability in assisting landowners and users in the stewardship of our nation's precious natural resources.

Or, here is another statement proposed by ILLICA's Dave Hurst

LICA promotes the stewardship of our precious natural resources through our network of members and partners by providing the tools to achieve high standards in land improvement.

The LICA Executive Committee should decide on the mission statement at their meeting in Atlanta. The statement will be part of the strategic plan update proposed to the membership in San Diego.

LICA's Vision Statement.

A vision statement expands on the LICA mission, and provides more insight into how that mission is to be carried out. The participants discussed many ideas for a vision. One idea from Rochester was:

LICA will be an effective partner to its members and state chapters supporting their capability in assisting landowners and users in the stewardship of our nation's precious natural resources by providing leadership and training, improving communications, promoting sound financial management, and providing representation to federal, state and local legislative bodies on natural resource issues.

This vision statement is quite good. It contains all the elements usually found in a vision statement. The LICA Executive Committee meeting in Atlanta should also decide on the vision statement prior to it going to the membership.

HISTORY OF VETERANS DAY

WW I-know at the time as "The Great War" officially ended when the Treaty of Versailles was signed on 6-28-1919. However, fighting ceased seven months earlier when an armistice, or temporary cessation of hostilities, between the Allied nations and Germany went into effect on the 11th day of the 11th month on the 11th hour. For that reason November 11, 1918, is generally regarded as the end of "the war to end all wars." In November 1919, President Wilson proclaimed November 11th as the first commemoration of Armistice Day with the following words: "To us in America, the reflections of Armistice Day will be filled with solemn pride in the heroism of those who died in the country's service and with gratitude for the victory, both because of the thing from which it has freed us and because of the opportunity it has given America to show her sympathy with peace and justice in the councils of the nations.."


The original concept for the celebration was for a day observed with parades and public meetings and a brief suspension of business beginning at 11:00am.

The United States Congress officially recognized the end of WW I

When it passed a concurrent resolution on June 4, 1926, with these words: **Whereas** the 11th of November, 1918, marked the cessation of the most destructive, sanguinary, and far reaching war in human annals and the resumption by the people of other nations, which we hope may never see again be severed, and **Where as** it is fitting that the recurring anniversary of this date should be commemorated with thanksgiving and prayer and exercises designed to perpetuate peace through good will and mutual understanding between nations; and **Where as** the legislatures of 27 of our States have already declared November 11 to be a legal holiday: Therefore be it Resolved by the Senate (the House concurring) that the President of the US is requested to issue a proclamation calling upon the officials to display the flag of the US on all Government buildings on November 11 and inviting the people of the US to observe the day in schools, churches, or other suitable places, with appropriate ceremonies of friendly relations with all other peoples.

An Act (52 Stat.351; 5 U S Code, Sec. 87a) approved May 13, 1938, made the 11th of November a legal holiday each year.


WOLFE PLOWS WOLFE 450 XLT PLOW



**WOLFE PLOWS, CHAIN, AND WHEEL
TRENCHERS**

PARSONS/KOEHRING PARTS & SERVICE

A&E Construction Supply
410 N 5th Ave E
Truman MN 56088
(800)736-3413



www.a-econstsupply.com
email: aeconst@frontiernet.net

PROVEN PERFORMANCE / BUILT TO LAST

Precision Intakes

Full Line of Surface Water Intakes

- 6" & 10" riser with patented 8" & 10" combination Tees.
Also 6" square & round risers with patented reducing Tee.
- Constructed of heavy-weight, high-density polyethylene.
- Parts highly adjustable & interchangeable with others on the market.
- Orifice plate placed at tee level or at ground level.
- Exclusive locking device on each part.
- User Friendly-Priced effectively.
- Adaptor available to repair old metal or broken intakes.



"Why 2 in 1?"
6" & 10" riser
8" & 10" tee
Blind End
8" Internal Coupler



PATENTED
REDUCING TEE

"Dealer Inquires Welcome"

PRECISION INTAKES

Norm & Coretha Rozendaal
2064 Republic Ave West
Monroe, IA 50170

(800) 932-7611
(641) 259-2651
(641) 259-3218 Fax

CASE Raising your Expectations

CONSTRUCTION



Take your business to a new level. Step up to a Case Compact Wheel Loader. The E Series has a big attitude and power to spare. You'll experience better reach, increased attachment visibility, precise level lifting and greater bucket rotation with Case Versa-Boom loader arms. Our cabs have big cab features, boosting your operator's comfort and productivity. Plus, our compact wheel loaders are compatible with countless attachments from tree spades and augers to pallet forks and snow blades. Three hydrostatic drive models available from 51 net horsepower to 72 net horsepower.

Tough in the Tread.

Get big machine durability and efficiency with our new Compact Track Loaders. Featuring proven Case undercarriage technologies, these mini-brutes deliver long component life. Permanently sealed rollers and idlers assure reliable performance. These Compact Track Loaders give you the toughness your jobs demand. Available in four models with 69 net hp to 83 net hp, Tier III engines. Pilot Control (ISO or "H" pattern) optional on select units.



Big Power. Compact Machine.

Case CX Compact Excavators deliver traditional excavator power to compact and restricted job sites. Through narrow doorways, against buildings or between structures, the Case CX Compact Excavators slip onto the tightest spaces to provide all the power and performance you need. Pattern selector standard on all five models ranging from 3240 pounds to 10,261 pounds.

St. Joseph Equipment has factory trained technicians to keep your new and used equipment at optimum performance. The parts department is fully stocked for all your maintenance needs. Financing and Leasing plans available. Call or stop by at one of our five convenient locations:

Shakopee **Elk River** **Duluth**
 952-445-5400 763-262-4474 218-727-2827
Rochester **La Crosse**
 507-288-3402 608-788-1025



Visit us on the web: www.stjosephequipment.com

OFFICERS

PRESIDENT

Kevin Bakken
 Bakken Excavating, LLC
 9600 South Dennison Blvd.
 Northfield, MN. 55057
 612-328-2784

VICE PRESIDENT

Mark Morreim
 Morreim Drainage, Inc.
 71610 263rd Street
 Albert Lea, MN. 55007
 507-826-3449

TREASURER

Doug Gysbers
 Doug's Back-Hoe Service
 6551 357th Street Way
 Cannon Falls, MN 55009

CHAIRMAN

Doug Gysbers
 Doug's Backhoe Service
 6551 357th Street Way
 Cannon Falls, MN. 55009
 507-263-5630

MNLICA OFFICE

Nordis Estrem-Exec. Director
 Estrem Excavating, Inc.
 4605 County 49 Blvd.
 Dennison, MN. 55018
dnestrem@frontiernet.net
Cell: 507-649-1771
 Phone: 507-789-5725
 Fax: 507-789-6033

Jeanie Bakken
 9600 South Dennison Blvd.
 Northfield, MN. 55057
 bakken4957@gmail.com
 507-645-6905
 Cell: 651-343-5866
 Fax: 507-645-1654

NATIONAL LICA

3080 Ogden Avenue
 Suite 300
 Lisle, IL. 60532
 Phone: 630-548-1984
 Fax: 630-548-9189

AREA STATE DIRECTORS

Chuck Wingert-**SE Vice Chair**
 Wingert Realty & Land Surveying
 Mankato, MN. 56001

Bruce Holst-**SE Area Chair**
 Bruce's Back-hoe Service, Inc.
 Goodhue, MN. 55027

Don Estrem-**SE Sec.**
 Estrem Excavating, Inc.
 Dennison, MN. 55018

Don Loken
 Don Loken Exc. & Drainage
 Owatonna, MN. 55060

Karlen Nelson-**SW & NO. Area Chair**
 Nelson Brothers Tiling
 Nicollet, MN. 56074

Stu Frazeur
 Stu Frazeur Tiling
 Canby, MN. 56220

Justin Wildfeuer
 Gass Trenching, Inc.
 Fulda, MN. 56131

Greg Walsh
 Greg Walsh Enterprises
 Murdock, MN. 56271

Otto Templin
 E & T Contracting, Inc.
 Hutchinson, MN. 55350

Mark Gregor
 Gregor Tiling
 Minnesota Lake, MN. 56068

Darren Anderson
 Anderson Rock & Lime, Inc.
 Cannon Falls, MN. 55009

Kevin Ellingson
 Ellingson Company, Inc.
 West Concord, MN. 55985

Doug Breberg
 Larson Tiling, Inc.
 Dawson, MN. 56232

Roger Molenaar-**Retired**
 Molenaar Drainage
 Renville, MN. 56284

Kent Rodelius-**Associate**
 Prinsco, Inc.
 Willmar, MN. 56201

James Becvar-**Associate**
 Century Plastics, Inc.
 Hayfield, MN. 55940

2012 UPCOMING EVENTS

MNLICA Web-site:www.mnlca.org

2012

January 15-17	MNLICA Convention	Best Western Hotel North Mankato
January 18	SSTS (6-hour) class	Best Western Hotel North Mankato
January 30-31	OSHA 10 hour training DOT Lock-out Tag-out 2-hour-Training	Sauk Centre, MN
February 7	MSHA	Kevin Bakken Shop, Northfield
February 7-12	NLICA Winter Convention	San Diego, CA Double Tree Hotel



MNLICA

9600 S. Dennison Blvd.
Northfield, MN 55057

PRSRT STD
US POSTAGE PAID
OWATONNA MN
PERMIT NO 41

Address Service Requested

THE LICA CREED

*Land, the foundation of the nation,
the basis of all wealth,
the heritage of the wise, the thrifty and prudent,
the poor man's joy and comfort,
the silent partner of man,
the producer of food, fiber and fuel,
the basis of factories,
the foundation of banks.*

*All that man builds is from the land.
We often take it for granted, or even abuse it,
and yet many unthinkingly and unknowingly pass the land by.
What man finally does with the land
will be the deciding factor in his survival.*