



MNLICA

NEWS

Land Improvement Contractors of America • Minnesota Chapter

PRESIDENT

Kevin Bakken

VICE PRESIDENT

Mark Morreim

CHAIRMAN OF THE BOARD

Doug Gysbers

TREASURER

Jim Walker

BOARD MEMBERS SE

Chuck Wingert

Mark Gregor

Don Loken

Kevin Ellingson

Don Estrem

Darren Anderson

Bruce Holst

BOARD MEMBERS SW/N

Karlen Nelson

Otto Templin

Greg Walsh

Stu Frazeur

Justin Wildfueur

Doug Freeborn

RETIRED

Roger Molenaar

ASSOCIATES

Kent Rodelius

James Becvar

EDITOR

Nordis Estrem

MNLICA 50 YEARS YOUNG AND STILL GOING STRONG!



page 12

**MINNESOTA AND NATIONAL LICA
\$1000.00 SCHOLARSHIP
FORMS DUE MARCH 15**

**See details on page 13 or go online
www.mnlca.org**



GREETINGS

From Your
PRESIDENT

Greetings

It's been an interesting past year to say the least. LICA, work, family, government to mention a few.

I'm writing this on January 20th, one day after Scott Brown won the senate seat in Massachusetts. It will be interesting to see what this may have to do with your company, or LICA. We will have to see!

It's going to be an interesting 2010. So be ready!

It was good to see many of you at the MNLICA 50th Anniversary Convention. MNLICA can be proud of the dedicated people who have served this organization over the years. 50 years is no small feat for an organization or for many of your family businesses.

It takes dedicated people to withstand the constant borage of government regulation. There used to be a time when our elected officials went to Washington to do the work of the people. They had what they called, "ethics"! But not anymore with back door payoffs and sweet heart deals. It's business as usual in Washington. Remember it's your right and privilege to vote what is on your mind.

Again, it was good to see everyone. I'm sure everyone had a good time and learned a little too. That's what LICA is all about!

Your President, Doug Gysbers

To access what's going on with legislative and other issues or meetings please go to the following:
MNLICA Web-site: www.mnllica.org


TRACK II
CORPORATION
"Our 32nd Year" **(800) 633-2332**
(952) 469-3456
www.track2corp.com
21860 Kenrick Ave.
Lakeville, MN 55044

After Hours Call:

Steve DeBaun (651) 681-1672

Ron Lunn (952) 432-9321

Al Droge (218) 543-6644

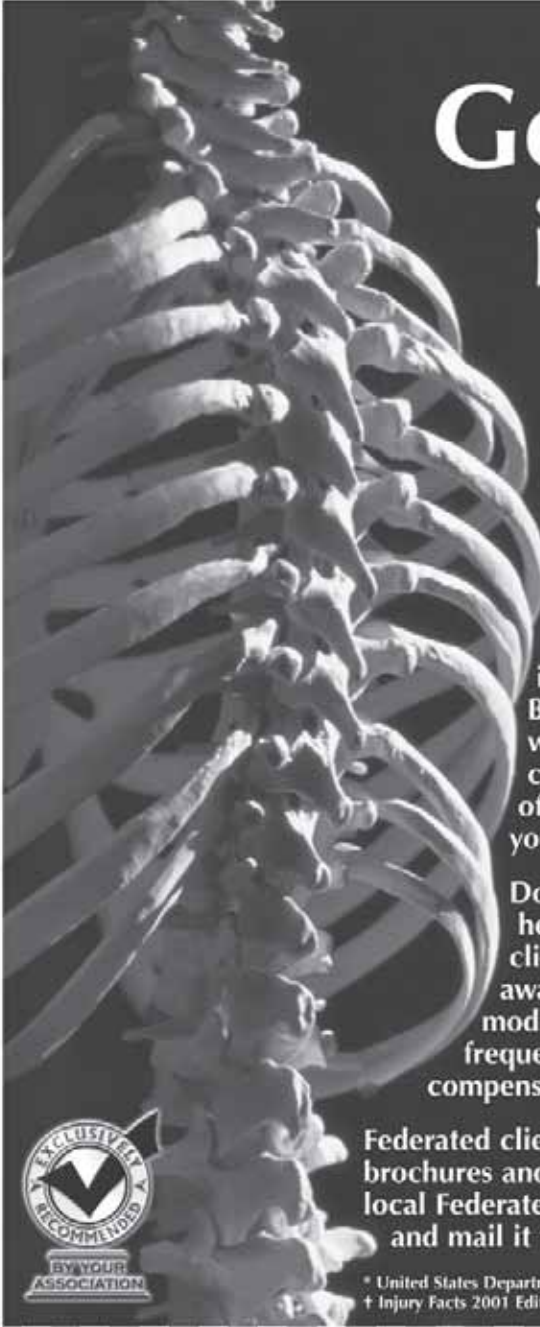
**Call "Your Source" for all your
Construction Machinery &
Replacement Parts Needs!**
And if we don't have it...we'll get it!!!

We furnish the ultimate combination:
*** Integrity**
*** Experience * Quality**
*** Providing the economical alternative**

BUY - RENT - LEASE

IN THE NEWSLETTER

Presidents Message	2
Meet Steve Holt	5
Meet New Member Nodland Construction Co.	6
Welcome New Member Schumacher Brothers Excavating, LLC	7
Midwest Construction Expo, March 18-19	7
Land Application of Industrial Wastewater	8
Legislative Bills to Watch	9
National Winter & Summer Meetings	
Recipes	
Member Insurance Benefits	
Directors Report	10
Drug & Alcohol Compliance	
Membership Application	11
Member Benefits	
Convention Pictures	12
Web Site Information	13
State & National Scholarship Information	
Avoid the TRAP!	
Upcoming Events/ Meetings	15



Got a **PAIN** in the back?

Get **BackTalk**SM


Federated clients have a great remedy. Statistically, 20 percent* of workplace-related illnesses or injuries involve the backs of your employees. Back injuries are the most frequent cause of missed workdays, and over \$37 million† are spent yearly on claims for those injuries. As an employer, your share of these costs may be having a serious impact on your company's financial health.

Don't just deal with back injuries after they happen—help prevent them. Created especially for Federated's clients, BackTalkSM—a back injury prevention awareness program, can help you change the attitude, modify the behavior, and reduce the severity and frequency of your employees' back-related workers compensation claims.

Federated clients can ask their local representative for sample brochures and posters. For your free BackTalkSM kit, contact your local Federated representative. Or, complete the coupon below and mail it today.

FEDERATED INSURANCE[®]

* United States Department of Labor, Bureau of Labor Statistics
† Injury Facts 2001 Edition, National Safety Council



Business Name _____

Contact Person _____

Title _____

Street Address _____

City/State/Zip Code _____

Telephone Number _____

Federated Policy/Account Number _____

Mail to: Owatonna Stockroom, Federated Insurance, P.O. Box 328, Owatonna, MN 55060

The FEDERATED Insurance Companies
Home Office: 121 East Park Square • Owatonna, MN 55060 • (507) 455-5200 • www.federatedinsurance.com

Office Use(K-BP): FS-C202 ADV-C104

Your part today, not tomorrow

**Other equipment dealers say they can deliver.
But do they?**

You can trust Ziegler to get you the part you need when you need it. We've been making good on that commitment for nearly a century.

**When you need a part, you need it in hours,
not days.** With a network of over 80 parts drops and an overnight parts shuttle system, Ziegler gets parts to you fast.

No part is hard to find. With an inventory of over 5 million Cat® and construction equipment parts in stock, there's a great chance we have the part you need on the shelf. And, over 98% of all orders are filled within 24 hours.

You need parts. Don't settle for promises — make them prove it. We can.

Ziegler delivers.



800.352.2812

Brainerd • Buhl • Columbus • Crookston • Duluth • Fergus Falls • Marshall
Minneapolis • North Mankato • Rochester • Shakopee • St. Cloud

ZIEGLER 

www.zieglercat.com

MEET STEVE HOLT

Holt Construction from Cannon Falls, MN.

Steve started his business on the spring of 1985. His business consisted of grave digging; some landscape and retaining walls or he would generally move the dirt for any type of job that come his way. He started with a 2-wheel drive Rubber-Tire Backhoe and a 1969 single-axel Dump truck. His son Leif joined him ten years ago. They became members of MNLICA in 2008.

Steve and Leif now do mostly light commercial, demolition, septic systems, city sewer and water systems, GEO thermal, driveways and basements. They have a 170 New Holland skidsteer, 650 John Deere dozer, 150 Kabelco excavator, 655D Ford/New Holland Tractor-Back-hoe and a U-35 Kabota mini-excavator.

Steve and his bride (soon to be 27 years) Karen have three other children along with Leif. They are daughters, Kayla (Tony) Holthe of Wanamingo, she works at Gemeni and Tony drives truck for another MNLICA member, Darrin Anderson trucking of Cannon Falls. Tony and Kayla have three children Connor (13), Drake (10) and Aiden (8). Daughter Majalina (Swedish family name), works as a chef at Kowalski's in St. Paul and has a daughter Elsa (2 years). Second son Braeden (17) a junior at Cannon Falls High School., (he helps occasionally).



Steve, Karen and family like to go camping when the time is available, which happens all too seldom according to Steve.

**FOR SALE OR WANTED TO BUY!
PLACE YOUR AD HERE!
Contact Nordis at 507-789-5725 or
507-649-1771 to place your ad here!**

NORTHLAND TRENCHING EQUIPMENT INC.



Inter-Drain 2050 GP

Your #1 Source
For New & Used
Trenchers & Plows
*Trimble Laser and
GPS Systems.
*Huge Parts
inventory
*Service
*Rentals

*Check out our website for all the latest
Inventory and info...*

www.northlandtrenching.com

E-mail: nte@hickorytech.net

Corporate Office:

12929 410 Ave. Waseca, Minnesota 56093

Phone: 507-835-4214 Fax: 507-835-2032

Eastern Division:

3578 N. State Road 59 Brazil, Indiana 47834

Phone: 812-835-2900 Fax: 812-835-2535

**WELCOME NEW MEMBER
NODLAND CONSTRUCTION CO.**

James and Laura Rentz of Nodland Construction Co. in Alexandria joined the MNLICA association.

The Nodland family has been involved in construction since the early 1930's, starting from a very humble beginnings in Starbuck, MN. The company began as a small business involved in the production & installation of concrete tile, used for agricultural land. As time evolved & the war years of the 40's passed the company became more involved in the sewer & water industry as the towns grew in west central MN. & needed these services.

Henry Nodland Sr. along with Henry Nodland Jr., a returning US Army Air Corps officer grew the company & moved to Alexandria, the company's current corporate office location. The Nodland Construction Co. worked primarily in MN, & the Dakota's, as many small communities expanded & installed municipal city services.

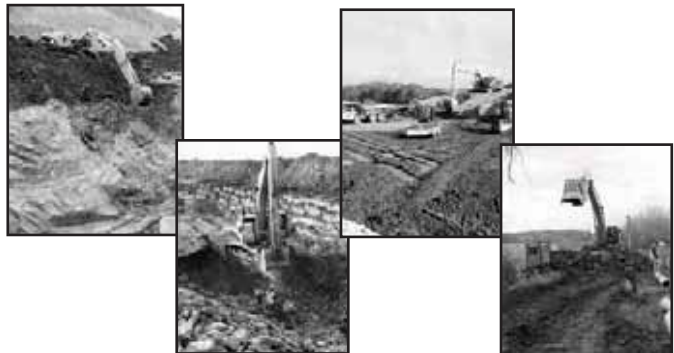
The current Nodland Construction Co, Inc. was started in 1954 working primarily in the Alexandria lakes area. The company incorporated in 1956 & expanded to doing larger projects & working in the fast growing Twin Cities. The first metro project was a joint venture with Barbarossa Const. Co. in Coon Rapids. The company continued to do work projects in western MN also.

Work continued to be strong & the company completed many large & notable projects. The firm expanded & grew through this period until a very large down turn in the construction market during the late 70's & early 80's. The onset of a stronger economy & lower interest rates brought about a renewed company growth starting in 1983, & has continued through today.

The company now under third generation of Nodland family leadership headed by Richard Nodland Sr. with Henry Nodland Jr. still active daily at the company's office. Key to Nodland Construction Co. is the 50 plus construction professionals employed in the different trades who make safety & quality the number one priority.

The company offers a full line of service to help our customers with their project needs. The motto of "No Project Too Big or Too Complex" is a good way to describe the company 50 years ago & still accurate today.

Nodland Construction Company has been an active member of the AGC for 50 years, a member of MUCA for 26 years & now a member of LICA. We feel strongly that affiliation with professional trade organizations is very important. We look forward to a relationship with MNLICA & it's members.



Agri Drain
CORPORATION

Your Partners in Water Management

We offer America's most complete selection of water management products for wetlands, ponds, lakes, controlled drainage, and sub surface irrigation. Along with tools, survey and safety equipment, and many hard to find items.

Wetland Water Level Control Structures

For a FREE catalog or to place an order—Call
1-800-232-4742

P.O. Box 458 • 1462 340th Street • Adair, Iowa 50002
Fax: 1-800-262-3353 • Email: info@agridrain.com
www.agridrain.com

**SELF PROPELLED
DRAINAGE PLOWS**

- Contractor inspired innovations
- CAT® diesel engines
- Oscillating track frames & auto-self leveling main frames
- Standard line fittings, hoses and fasteners
- Climate controlled cab
- Available as add-on or self propelled units

visit us on the web at
www.rwfbron.com

BRON

Tel: 1-519-421-0036
Toll-Free 1-800-263-1060
Fax: 1-519-421-0028
Email: info@rwfbron.com

Midwest Construction Expo March 18-19, 2010

The inaugural Midwest Expo will be held at the Minneapolis Convention Center on Thursday and Friday, March 18th & 19th, 2010. Show hours are 9:30 to 4:00 both days. Admission is FREE!

Over 100 exhibits are planned, featuring the latest makes & models of construction equipment, as well as trucks, trailers, attachments, contractor supplies & all the ancillary products & service, such as finance, bonding, insurance & more.

Several of the area's top equipment dealers have already committed to the show, including Ziegler CAT, Lano Equipment, St. Joseph Equipment, Road Machinery & Supplies, RDO & Trenchers Plus.

In addition to the exhibits the show will be an outstanding educational opportunity for attendees. Many of the industry's leading associations are working closely with CEG Productions, the show's producers, to develop programs that will help contractors do their jobs better, faster, safer & more efficiently.

Among the participating associations will be the Minneapolis Utility Contractors Assn, the Minnesota chapters of the Land Improvement Contractors of America, the Minnesota Construction Association, the Associated Builders & Contractors, & the Association of General Contractors. Also participating is the commercial vehicle enforcement division of the Minnesota State Patrol.

According to Bob Buckley, president of CEG Productions, the purpose of the show is to provide a venue for contractors, landscapers, builders & public works officials to gather in a setting where they can learn about new products & innovations in the industry, network with their colleagues, & attend seminars that will prepare them to compete successfully in today's marketplace.

"The tremendous support we're getting from all segments of the industry will allow us to give contractors a day jam-packed with activities & information," he said.

CEG Productions is the trade show division of Construction Equipment Guide, a National newspaper, with four regional editions, which has been serving the industry for more than 50 years.

WELCOME NEW MEMBER ANDY SCHUMACHER Schumacher Brothers Excavating, LLC RED WING, MN.

Schumacher Brothers, LLC does a variety of work from basements to conservation work of all types. The business was started in 2008.

THANK YOU ST. JOSEPH OF EYOTA ZIEGLER/CAT OF BLOOMINGTON

Thank you, especially Don Benz & Paul Pogalz of St. Joseph and Andy leach of Ziegler/Cat for all your work to organize the MNLICA trainings held at your facility. Three trainings were held at each company with Larry & Craig Peterson from the NRCS offices and Paul Aanama and Bruce Moiser of Prins Ins. doing the trainings. A great lunch was appreciated at both companies.

St. Joseph training



Ziegler/CAT training



Quality Concrete Drain Tile

- Competitive prices
- Full inventory of 5" to 48" Concrete Drain Tile
- Concrete T's, Intake Caps, Gates
- Fast delivery to your jobsite



Hector Tile Company, Inc.

721 South Main Street, Hector, Minnesota 55342

1-800-640-9910

Land Application of Industrial Wastewater : What a Pumper needs to Know

By Pat Shelito, Minnesota Pollution Control Agency (Brainerd Office)

Septic system maintainers are frequently hired by commercial enterprises to pump floor drain, holding tanks and the like that contain non-sewage wastewater. Once it's in your truck, what do you do? It is tempting to treat it just like you septage from an SSTS, but that is not the best approach. You can haul it to a wastewater treatment plant, but what if there isn't one around that will agree to take the waste? Can you land apply it, like you do the septage you haul for homeowners?

Short story: you can't. Long story: the **facility owner** needs to fill out a "Notification to Land Apply Industrial By-Product without a Permit" form (Notification form), submit it to the Mn Pollution Control Agency and wait 30 days for review. Approval to land apply commercial waste water is based on MPCA review of the Notification Form.

The long, long story: Due to an enforcement case last spring, it was brought to the attention of the MN Pollution Control Agency Industrial Waste water staff that wastewater from businesses was being land applied. In most cases land application of commercial or industrial waste water is not allowed without a permit. MPCA has a well defined program to land apply food and agricultural wastes but not industrial wastes. The sample results of the waste water must be reviewed by the Industrial Waste Water Permitting staff to determine whether or not it is safe to land apply. Once it is reviewed, Industrial Waste Water Permitting staff will make one of three decisions: 1) it can be land applied with a permit, 2) it can be land applied without a permit, 3) it cannot be land applied.

If the waste cannot be land applied; it must be taken to a waste water plant for disposal. The wastewater plant will also probably require sampling of the waste before they will take it. Not all wastewater plants will take this waste. You may have to take this waste to a larger wastewater plant than your local city plant. The grit from floor drains and flammable traps are solid waste and must be disposed of as solid waste or receive a beneficial use determination from MPCA solid waste staff.

Take the samples well in advance since it will take a couple of months to receive sampling results and get a MPCA decision about land application.

To get permission to land apply; the **facility owner** will need to fill out the Notification form, do the required sampling and work with MPCA Industrial Waste Permitting staff to determine whether or not commercial waste can be land applied. It is important that the sample results be representative of the waste. It's a good idea to discuss specific sampling parameters with the Industrial Waste water permitting staff. All facilities should be following the Best Management Practices (BMP's) in MPCA factsheet "Managing Floor Drains and Flammable Traps", if you wish to land apply this waste water. The fact sheet can be found on the MPCA website at: <http://www.pca.state.mn.us/publications/w-hw4-18.pdf>.

The Notification form can also be found on the MPCA website at: <http://www.pca.state.mn.us/water/landapp.html\wq-Indapp7-14.doc>

CHICKEN BROCCOLI SALAD

By Lorraine Harty of Cannon Falls

4-6 skinned/boneless chicken breasts
 14.5 oz. can chicken broth
 1 teaspoon minced garlic
 4 green chopped chives (with tops) or other onion
 1 cup dried cranberries
 1/4 cup Soy sauce
 3 cups broccoli flowerets
 Cook chicken in soy, garlic & broth until tender. Cool in broth, then drain chicken & cut into bite size pieces. Toss all ingredients.
 Dressing: 3/4 cup mayonnaise, 1/4 cup sugar, 2 teaspoons vinegar. Mix well, add to chicken mixture. Keep in refrigerator.

MEMBER BENEFIT

Term Life Insurance & Accidental Death & Dismemberment for each member under 65 years old receives \$5000.00 from National LICA, plus MNLICA also gives you \$5000.00 AD&D with your state membership.

Available with your membership is a program for your insurance needs that will pay you a dividend for being safe throughout the year. This is available only to Region IV LICA members through Continental Western. Federated Insurance is also very competitive in their prices. Check these benefits out today!

LEGISLATIVE BILLS TO WATCH

By John Peterson

CAP & TRADE: LICA has concerns about the impact of the House passed Waxman-Markey energy bill & its effect on your businesses. The US economy depends on carbon-based fuels, which account for 85% of the energy we use. That will not change anytime soon. Cap & Trade establishes a \$700 billion government-run “market” for business to buy & sell a steadily declining number of permits for creating carbon emissions. Confusing? Imagine a steady tightening chokehold on your windpipe, & you’ve got what Cap & Trade will do to America’s economy.

CARD CHECK OR EMPLOYEE FREE CHOICE

ACT: The measure, known as Card Check Bill would allow a union to form after enough workers in a shop sign cards, or petitions, rather than voting by secret ballot. LICA believes that the Card Check Bill has 3 principal prongs, all of them bad; 1) it could effectively eliminate the secret ballot election, 2) it would short circuit the collective-bargaining process after 120 days, allowing an arbiter to impose contract terms neither the union or the company has sought, 3) it would replace remedial penalties for NRLB violations with Draconian punitive fines that could drive some firms into bankruptcy, while imposing no fines for union misconduct.

CLEAN WATER ACT; The US house & Senate are both proposing amendments to the Federal Water Pollution Control Act of 1972 (PL-500). The House Bill introduced on 5-21-07, is HR 2421 championed by Rep. Oberstar, MN. The Senate Bill introduced in 4-2-09 by Sen. Feingold, WI & others. One of the concerns about these proposed amendments is that they would replace the term “**navigable waters**” with the term “**waters of the United States**”. This change alone would vastly expand federal control over all the waters of the United States including potholes, playas & irrigation return flows on private property. These proposals:

Grant EPA & the USACE unlimited regulatory control over all “intrastate” waters.

Grant EPA & USACE unrestricted authority to regulate all activities (private or public) that may affect intrastate waters.

Nullify existing agency regulations without maintaining long-standing & important regulatory exemptions allowing historically commonsense uses.

Include a citizen lawsuit provision that allows anyone to sue you if they “think” your activity “might” affect water.

While **the original CWA** was not very broad & extensive, it **was never intended to be unlimited**, & that is what these amendments would make it. This real issue is NOT about Clean Water, it is one of jurisdiction, & federal control.

NATIONAL LICA WINTER MEETING

The national LICA Winter Meeting will be held from February 16-20, 2010 in Phoenix, AZ. The hotel is the Sheraton Crescent Hotel. Be sure to mention LICA to get the \$119.00 rate.

The 16th and 17th are pre-tour days with lots of fun and educational things to do. Some of the tours will be going to the John Deere proving grounds, sightseeing on the Dolly Steamboat, Greasewood Flats and others. The LICA meetings will begin on the morning of the 18th. The agenda, tour descriptions and registration form is available on their website; LICANational.org or nlica@aol.com. The weather should be great! So book a cheap flight now and come join the fun!

NATIONAL LICA SUMMER MEETING

The National LICA Summer Meeting will be from July 13-17, 2010 in Peoria, IL. The hotel is the Holiday Inn & City Centre Conference Center. There will be pre-tours to the Caterpillar Factory & proving grounds plus several other fun places to visit and see. So plan a family vacation around this event and see old friends or make some new ones!

CHIVE-HAM BRUNCH BAKE

1/2 cup chopped onion
1 tablespoon butter
1 can (5oz.) chunk ham (drain)
1 medium chopped tomato
2 cups biscuit/baking mix
1/2 cup water
1 cup (4oz) shredded swiss or cheddar cheese
2 eggs
1/4 cup milk
1/4 teaspoon dill weed
1/4 teaspoon salt
1/8 teaspoon pepper
3 tablespoons minced chives

In a skillet, sauté onion in butter until tender. Stir in ham & tomato; set aside. In a bowl, combine biscuit mix & water; mix well. Press onto the bottom of a greased 13”x9”x2” baking dish. Spread ham mixture over the crust; sprinkle the cheese on top. In a bowl, beat eggs, milk, dill, salt & pepper, pour over cheese. Sprinkle with chives. Bake, uncovered for 25-30 minutes or until a knife inserted near the center comes out clean.
Serves 8.

It pays to use *the pipe with the gold stripe.*

- ✓ Quality, durable polyethylene pipe
- ✓ Committed, knowledgeable sales staff
- ✓ Expanded product line and distribution area
- ✓ Dependable, friendly truck drivers
- ✓ 24-hour customer resource center at prinsco.com
- ✓ Marketing support for your business

Call or click for a free catalog today.
It pays!



MN Corporate Hqtrs.: (800) 992-1725
IL Dist. Center: (800) 869-7712

IA Dist. Center: (800) 533-8327
MN Dist. Center: (800) 699-7187

DIRECTORS REPORT

Jan & Nordis have been working on finishing the convention monies and bills. THANK YOU MEMBERS & ASSOCIATES that either attended the convention, 50th Anniversary party. **Those having a booth at the Tradeshow or sponsored an event or meal are as follows:**

A & E Construction Supply, ADS, ADMC, Agri-Drain, Carlson Tractor & Equipment, Century Plastics, Continental Western, E E P, Federated Ins, Hancor, KOCH Pipeline, Makenzie Agency, McPherson Crop Management, Mid-Tech Services, Northland Trenching, Port Industries, Precision Intakes, Prins Ins, Prinsco, Inc, RDO, RMS, Rust Sales, RWF BRON, St. Joseph Equipment, Willmar Precast, Ziegler/CAT. Be sure to say THANK YOU for their continued support of MNLICA!

The OSHA, MSHA & 1st Aid trainings will be held on March 15-17, 2010 at Worthington, Dennison and Willmar. These are important trainings to have so plan now to attend at the closest area. These trainings are for employees and owners.

MNLICA is going to sponsor a booth at the Mid-West Construction Expo in March, 2010. This will be held at the Minneapolis Convention Center. We will be needing volunteers to man this show. Please help us out!

DRUG AND ALCOHOL COMPLIANCE

Several members have asked where there is a company to use to comply with the MN. Drug & Alcohol testing required by the state. MNLICA has a program through Midwest Compliance Inc. that you can join for a fee. This company has three levels of services to fit all sizes of companies and their needs. For cost and form please call them at 320-656-1396 or 800-656-1396 and ask for Sandra Brakstad. For more information on what this covers call Nordis.


When you Hut is on Fire!

The only survivor of a shipwreck was washed up on a small uninhabited island. He prayed feverishly for God to rescue him. Every day he scanned the horizon for help, but none seemed forthcoming. Exhausted, he eventually managed to build a little hut out of driftwood to protect him from the elements. One day, after scavenging for food, he arrived home to find his little hut in flames, with smoke rolling to the sky. He felt the worst had happened, & everything was lost. He was stunned with disbelief, grief & anger. He cried out, "God! How could you do this to me?" Early the next day, he was awakened by the sound of a ship approaching the island! It had come to rescue him! "How did you know I was here?" asked the weary man of his rescuers. "We saw your smoke signal," they replied.


The Moral of the Story:

It's easy to get discouraged when things are going bad, but we shouldn't lose heart, because God is at work in our lives, even in the midst of our pain & suffering. Remember that the next time your little hut seems to be burning to the ground. It just might be a smoke signal that summons the Grace of God.


**Mention Wetlands, Drainage or Permits
and Someone will Mention
Rinke Noonan.**



KURT DETER



JOHN KOLB



GARY LEISTICO

Landowners are becoming increasingly aware of the difficulties in dealing with wetlands, drainage and acquiring permits. The DNR, NRCS, Corps of Engineers, county and local governments all may have interests that must be addressed.

Our work involves wetlands, drainage, and other water related issues, permits — areas of law that are constantly changing and becoming more specialized.


If you're facing a challenge in any of these areas, or are wondering if you could benefit from legal help, call Kurt, John or Gary at (320) 251-6700.


RINKE NOONAN
ATTORNEYS AT LAW

SUITE 700, NORTHWEST CENTER, 400 FIRST STREET SOUTH,
ST. CLOUD, MINNESOTA 56301 • (320) 251-6700

**Drainage tile, Standing Intakes, Outlet pipes,
Culverts, Basement waterproofing, Sump
baskets & many misc items**

www.centurypipe.com





**Century
Plastics, Inc.**
Manufacturing, Sales & Delivery

james@centurypipe.com
Po Bx 51 Hayfield, MN 55940

800-545-9546 507-438-7676

In Business Since 1972
Call Us Today for your free quote!

MEMBERSHIP APPLICATION

Please enroll me as a Member of the Minnesota Land Improvement Contractors Association. I understand That I will receive all member benefits, and that they will begin as soon as my application is approved and My dues are received in the State Office. My membership fee includes membership in the National Land Improvement Contractors of America.

Name: _____

Spouse: _____

Company: _____

Address: _____

City, State, Zip: _____

Phone: _____

Fax: _____

E-Mail: _____

Birthday (for Ins.): _____

Please enclose check payable in the appropriate amount as indicated below and mail this form to:

MNLICA, 1146 Ironwood Ave., Owatonna, MN. 55060.

Contractor Member	\$350.00
Associate Member	\$200.00
Retired Member	\$ 50.00

MEMBER BENEFITS

1. TERM LIFE INSURANCE & AD&D INSURANCE
2. **CONTRACTOR CERTIFICATION PROGRAM**
3. NATIONAL & STATE NEWSLETTERS
4. **SAFETY MANAGEMENT PROGRAMS**
5. **OSHA TRAININGS**
6. **MSHA TRAININGS**
7. **ISTS-SSTS TRAININGS**
8. UPDATES ON THE NEWEST LAWS/REGULATIONS
9. **FELLOWSHIP** with the Friendly Competition
10. DISCOUNTS AT NATIONAL CHAIN HOTELS
11. LAND & WATER MAGAZINE
12. **STATE/NATIONAL SCHOLARSHIPS FOR YOU**
13. & **EMPLOYEES CHILDREN/GRANDCHILDREN**
13. **SAFETY MANUAL WITH OSHA FORMS**
14. WINTER & SUMMER CONVENTIONS
15. ACCESS TO DRUG & ALCOHOL TESTING
16. REWARD PROGRAM FOR THEFT & VANDALIZED EQUIPMENT
17. GAIN LEADERSHIP & ORGANIZATIONAL SKILLS
18. ACCESS TO A WIDE VARIETY OF EQUIPMENT SUPPLIES & ADVICE IN AREAS OF BUSINESS
19. SELF-INSURED WORK COMP PROGRAM ACCESS
20. FLEX SYSYTEM/BIZ PLANS; PERKS CARD
21. ADDITIONAL TERM LIFE, RETIREMENT PROGRAM
22. REPRESENTATION ON USDA COMMITTEE & the NATIONAL WATERSHED COALILITION COMMITTEE & the COMMON GROUND ALLIANCE
23. **REPRESTATION AT MN. & WASHINGTON D.C.**

COMPLETE TRACK SERVICE New and Used Undercarriage Parts

- FINAL DRIVE AND STEERING CLUTCH PARTS & REPAIR
- LINE BORING SERVICE
- DOZER BLADE PARTS AND REPAIR
- DRAGLINE AND BACKHOE REPAIR & PARTS
- CRUSHER ROLL REBUILDING
- COMPLETE UNDERCARRIAGE REBUILDING



Crawler Welding, Inc.

319 Pintail Street • Mankato, MN 56001



ALL MAKES OF MACHINES Call For Prices
(507) 387-3121

Please include machine serial number

Jct. Hwy. 169 So. & Hwy. 68, Mankato, MN

MNLICA 2010 CONVENTION AND 50TH ANNIVERSARY



MNLICA STATE AND NATIONAL SCHOLARSHIPS

Remember for your current Seniors in High School, MNLICA offers two (2) \$1000.00 dollar scholarships every year. Your local school or Jan and Nordis have the forms.

To be eligible for the Minnesota scholarship the Senior must be a child or grandchild of a MNLICA member or a child of an employee (employed 6 months or more) of a MNLICA member. Can be used for any college or trade-school.

The application must be filed by March 15 of each year to the MNLICA office at Owatonna.

To be eligible for one of the three National LICA \$1000.00 scholarships the parent of the child must be a LICA member. The National scholarship can be applied for any year of college or of trade-school. This scholarship can be applied for & won more than one year. This form is due March 15 of each year.

AVOID THE TRAP!

By Nicole Wisniewski

What to do when your feeling helpless in this economy! "Be careful what you aim for because that's what you are going to get".

Here is an old motivational story;

One golfer steps up to the tee, looks at the water trap nestled just before the green, lines up his shot & thinks, "I will not hit the ball into the water". He takes his shot & sure enough, the ball plops straight into the water.

The second golfer steps up to the tee, see the water, lines his shot & says "I will hit the ball onto the green". He takes his shot, and the ball lands on the green.

The moral is obvious: "Be careful what you aim for because that's what your going to hit".

This year, you may have positioned your business in the best possible way. You may be marketing, & selling your services adequately. You may be hiring & training better. But if you don't have the right state of mind as a business owner, does any of this matter?

We all hear about how bad the economy is. The news & the numbers say things are pretty grim. Whether it's concerning our own business or those of our family & friends, we're all coping with restructuring, layoffs, tight budgets, pay cuts, cost trimming, etc. It's scary!

The bad news is top of mind—how couldn't it be?

But stop for a minute & consider what this does to your outlook! Are you thinking of the water trap or the green? Are you constantly thinking about how to protect your job, your company? Are you worried how far the numbers can slide before closing the doors? When the only thing on your mind is the water trap, then isn't that where you will end up? **BE POSITIVE!**

WOLFE PLOWS

WOLFE 450 XLT PLOW



WOLFE PLOWS, CHAIN, AND WHEEL TRENCHERS

PARSONS/KOEHRING PARTS & SERVICE

A&E Construction Supply
410 N 5th Ave E
Truman MN 56088
(800)736-3413



www.a-econstsupply.com
email: aeconst@frontiernet.net

PROVEN PERFORMANCE / BUILT TO LAST

MNLICA WEB MAIL

To get items on the MNLICA Web page please contact Mike Lehman at 507-345-5263 or you may e-mail him at

Precision Intakes

Full Line of Surface Water Intakes

- 8" & 10" riser with patented 8" & 10" combination Tees.
Also 6" square & round risers with patented reducing Tee.
- Constructed of heavy-weight, high-density polyethylene.
- Parts highly adjustable & interchangeable with others on the market.
- Orifice plate placed at tee level or at ground level.
- Exclusive locking device on each part.
- User Friendly-Priced effectively.
- Adaptor available to repair old metal or broken intakes.



Why inventory 2, when 1 serves both!



"Dealer Inquires Welcome"

PRECISION INTAKES

Norm & Coretha Rozendaal
2064 Republic Ave West
Monroe, IA 50170

(800) 932-7611
(641) 259-2651
(641) 259-3218 Fax

CASE Raising your Expectations

CONSTRUCTION



Take your business to a new level. Step up to a Case Compact Wheel Loader. The E Series has a big attitude and power to spare. You'll experience better reach, increased attachment visibility, precise level lifting and greater bucket rotation with Case Versa-Boom loader arms. Our cabs have big cab features, boosting your operator's comfort and productivity. Plus, our compact wheel loaders are compatible with countless attachments from tree spades and augers to pallet forks and snow blades. Three hydrostatic drive models available from 51 net horsepower to 72 net horsepower.

Tough in the Tread.

Get big machine durability and efficiency with our new Compact Track Loaders. Featuring proven Case undercarriage technologies, these mini-brutes deliver long component life. Permanently sealed rollers and idlers assure reliable performance. These Compact Track Loaders give you the toughness your jobs demand. Available in four models with 69 net hp to 83 net hp, Tier III engines. Pilot Control (ISO or "H" pattern) optional on select units.



Big Power. Compact Machine.

Case CX Compact Excavators deliver traditional excavator power to compact and restricted job sites. Through narrow doorways, against buildings or between structures, the Case CX Compact Excavators slip onto the tightest spaces to provide all the power and performance you need. Pattern selector standard on all five models ranging from 3240 pounds to 10,261 pounds.

St. Joseph Equipment has factory trained technicians to keep your new and used equipment at optimum performance. The parts department is fully stocked for all your maintenance needs. Financing and Leasing plans available. Call or stop by at one of our five convenient locations:

Shakopee **Elk River** **Duluth**
 952-445-5400 763-262-4474 218-727-2827
Rochester **La Crosse**
 507-288-3402 608-788-1025



Visit us on the web: www.stjosephequipment.com

OFFICERS**PRESIDENT**

Kevin Bakken
Bakken Excavating, LLC
9600 South Dennison Blvd.
Northfield, MN. 55057
612-328-2784

VICE PRESIDENT

Mark Morreim
Morreim Drainage, Inc.
71610 263rd Street
Albert Lea, MN. 55007
507-826-3449

TREASURER

Jim Walker
Barnett Brothers, Inc.
41375 State Hwy. 13
Kilkenny, MN. 56052
Phone:507-364-8869

CHAIRMAN

Doug Gysbers
Doug's Backhoe Service
6551 357th Street Way
Cannon Falls, MN. 55009
507-263-5630

MNLICA OFFICE

Nordis Estrem-Exec. Director
Estrem Excavating, Inc.
4605 County 49 Blvd.
Dennison, MN. 55018
Phone: 507-789-5725
Fax: 507-789-6033
dnestrem@frontiernet.net
Cell: 507-649-1771

Jan Loken—Exec. Director
Don Loken Drainage, Inc.
1146 Ironwood Avenue
Owatonna, MN. 55060
Phone: 507-446-8478
Fax: 507-446-0602
mnlica_loken@charter.net

NATIONAL LICA

3080 Ogden Avenue
Suite 300
Lisle, IL. 60532
Phone: 630-548-1984
Fax: 630-548-9189

AREA STATE DIRECTORS

Chuck Wingert-**SE Vice Chair**
Wingert Realty & Land Surveying
Mankato, MN. 56001

Bruce Holst-**SE Area Chair**
Bruce's Back-hoe Service, Inc.
Goodhue, MN. 55027

Don Estrem-**SE Sec. & Treasurer**
Estrem Excavating, Inc.
Dennison, MN. 55018

Don Loken
Don Loken Exc. & Drainage
Owatonna, MN. 55060

Karlen Nelson-**SW & NO. Area Chair**
Nelson Brothers Tiling
Nicollet, MN. 56074

Stu Frazer
Stu Frazer Tiling
Canby, MN. 56220

Justin Wildfeuer
Gass Trenching, Inc.
Fulda, MN. 56131

Greg Walsh
Greg Welsh Enterprises
Murdock, MN. 56271

Otto Templin
E & T Contracting, Inc.
Hutchinson, MN. 55350

Mark Gregor
Gregor Tiling
Minnesota Lake, MN. 56068

Darren Anderson
Anderson Rock & Lime, Inc.
Cannon Falls, MN. 55009

Kevin Ellingson
Ellingson Company, Inc.
West Concord, MN. 55985

Doug Freeborn
Larson Tiling, Inc.
Dawson, MN. 56232

Roger Molenaar-**Retired**
Molenaar Drainage
Renville, MN. 56284

Kent Rodelius-**Associate**
Prinsco, Inc.
Willmar, MN. 56201

James Becvar-**Associate**
Century Plastics, Inc.
Hayfield, MN. 55940

2010 UPCOMING EVENTSMNLICA Web-site:www.mnllica.org

February 16-20	NLICA Winter Convention	Phoenix, AZ
March 15-17	OSHA; MSHA & 1ST AID	Worthington, Dennison, Willmar
March 18-19	Mid-West Construction Expo	Mpls, Convention Center
April 10	Spring Board Meeting	Southwest/North area
Summer Board Meeting & Training to be determined		
September	Golf Scholarship Best Ball Board Meeting	to be determined
Fall/Winter	Area & Board Meetings	to be determined



MNLICA

1146 Ironwood
Owatonna, MN 55060

PRSRT STD
US POSTAGE PAID
OWATONNA MN
PERMIT NO 41

Address Service Requested

THE LICA CREED

*Land, the foundation of the nation,
the basis of all wealth,
the heritage of the wise, the thrifty and prudent,
the poor man's joy and comfort,
the silent partner of man,
the producer of food, fiber and fuel,
the basis of factories,
the foundation of banks.*

*All that man builds is from the land.
We often take it for granted, or even abuse it,
and yet many unthinkingly and unknowingly pass the land by.
What man finally does with the land
will be the deciding factor in his survival.*