



February 2012-March 2012

MNLICA

NEWS

Land Improvement Contractors of America • Minnesota Chapter

SCHOLARSHIPS

Apply now to NLICA and MNLICA

Make sure all MNLICA high school seniors (this includes employees children and your grandchildren) apply for the 2-one thousand dollar MNLICA scholarships and the National LICA 8-five hundred dollar scholarships by March 2012. Get forms on-line or at the MNLICA office.

MNLICA 2012 CONVENTION Education, Fellowship and Fun

PRESIDENT

Mark Morreim

VICE PRESIDENT

Karlen Nelson

CHAIRMAN OF THE BOARD

Kevin Bakken

TREASURER

Doug Gysbers

SE BOARD MEMBERS

Mike Lehman

Mark Gregor

Don Loken

Don Estrem

Kevin Ellingson

Darrin Anderson

Bruce Holst

SW/N BOARD MEMBERS

Karlen Nelson

Otto Templin

Greg Walsh

Stu Frazeur

Justin Wildfeuer

Doug Breberg

RETIRED

Roger Molenaar

ASSOCIATES

Kent Rodelius

James Becvar

EDITOR

Nordis Estrem





GREETINGS From Your PRESIDENT

On January 15th, 16th and 17th MnLICA held their annual convention in Mankato. I feel this convention was very educational and a huge success. On Monday the first educator was two hours late due to a misunderstanding. An impromptu discussion was led by Stu Frazeur of Stu Frazeur Tiling concerning tiling issues. Stu did a great job and this discussion was very educational. Then we asked Dan Wiese of TopCon/RDO to talk about G.P.S. This was also an impromptu talk that had great success. Thank you, Dan. Then Dave and Joel Leake gave a presentation on asbestos and mold remediation as pertaining to demolition. Very informative.

We had a great trade show put on by our associates with twenty-six booths to walk thru and see the latest in technologies. Thank you associates.

After lunch once again Kevin Maring helped us with our annual auction. The proceeds from the auction go to our Political Action and general fund. Thank you to everyone who donated items, Kevin Maring for your services and all the liberal bidders and associates. The annual meeting was held Monday evening with Doug Gysbers, Chairman of the Board presiding. Mike Lehmann of Air Row Farm Drainage was elected to the board, he is replacing Chuck Wingert. Thank you Chuck for your years of services and professionalism. Karlen Nelson of Nelson Brothers Tiling was elected the new vice president and Mark Morreim of Morreim Drainage Inc. was installed as the new president and I moved to Chairman of the Board.

Tuesday's classes included Distracted Driving presented by Craig Jankowski of Federated Insurance, the D.O.T.- Regulations with Dave Busse a Commercial Vehicle Inspector with the MN Hwy Patrol, Drug & Alcohol Compliance with Sandra Brakstad of Midwest Compliance, What's New for 2012; Soils, Conservation, Wetland, Swamp-Buster and More with Sid Cornelius/John Brach-NRCS, John Jaschke-BWSR and Kent Rodelius of ADMC. Mark Morreim led a roundtable discussion on legislative issues.

Wednesday was the Septic Continuing Education class presented by Dave Gustafson of the University of Minnesota. Dave did a great job as usual. Great convention, thank you Jeanie and Nordis for all you do for us.

Thank you very much for letting me represent the organization for the last two years as president. The time flew by very quickly. It was very educational, and a good experience for me. I have met some wonderful people and formed great friendships through LICA. I plan to stay involved with LICA in the future. Thank you once again.

Respectfully submitted,
Kevin Bakken
Past President


TRACK II
 CORPORATION
 "Our 33rd Year"

(800) 633-2332
(952) 469-3456
 www.track2corp.com
 21860 Kenrick Ave.
 Lakeville, MN 55044

After Hours Call:
Steve DeBaun (651) 681-1672
Ron Lunn (952) 432-9321
Al Droge (218) 543-6644

**Call "Your Source" for all your
 Construction Machinery &
 Replacement Parts Needs!**
And if we don't have it...we'll get it!!!

We furnish the ultimate combination:
** Integrity*
** Experience * Quality*
** Providing the economical alternative*

BUY - RENT - LEASE

FEATURES

Presidents Report	2
A very Grave Matter; John Peterson	5
Recipe: White Chicken Chile	
Safety: Preventing Hypothermia	6
JUST GET ONE	7
Light-Squared disrupts plane safety gear in tests	
NLICA CONVENTION, San Diego, CA	8
New Benefit :Hotel Savings Card	
OSHA 10 HOUR & DOT 2 HOUR FORM	9
MSHA Training Form	10
Safety: Know what's below before you DIG!	11
Warm Temps can lead to Septic Problems	12
Meet Jan Loken	13
Directors Report	14
Membership Application	15
Member Benefits	
Safety: Stacking Snow	16
Award Winners for 2011	
Thank You to MNLICA Associates and Members	17
Upcoming Events	19

ONE Call, ONE Company



Your Federated representative, along with a dedicated support team, has access to a wide variety of products and services. Discover the value of being able to access all of these services—with only one call—using one company.

Visit www.federatedinsurance.com to find a representative near you.



Federated Mutual Insurance Company • Federated Service Insurance Company* • Federated Life Insurance Company
Home Office: 121 East Park Square • Owatonna, Minnesota 55060 • Phone: (507) 455-5200 • www.federatedinsurance.com

*Federated Service Company is not licensed in the states of NH, NJ, RI, and VT.

© Copyright 2012 • Federated Mutual Insurance Company

Your part today, not tomorrow

**Other equipment dealers say they can deliver.
But do they?**

You can trust Ziegler to get you the part you need when you need it. We've been making good on that commitment for nearly a century.

**When you need a part, you need it in hours,
not days.** With a network of over 80 parts drops and an overnight parts shuttle system, Ziegler gets parts to you fast.

No part is hard to find. With an inventory of over 5 million Cat® and construction equipment parts in stock, there's a great chance we have the part you need on the shelf. And, over 98% of all orders are filled within 24 hours.

You need parts. Don't settle for promises — make them prove it. We can.

Ziegler delivers.



800.352.2812

Brainerd • Buhl • Columbus • Crookston • Duluth • Fergus Falls • Marshall
Minneapolis • North Mankato • Rochester • Shakopee • St. Cloud

ZIEGLER CAT

www.zieglercat.com

A Very Grave Matter. John Peterson, LICA Director of Government Relations

As I was thinking of a subject for my last missive of 2011, I stumbled across a short article in an old July 2007 issue of *Farm & Ranch Living Magazine* that related to LICA members in a way, but was interesting and lighthearted. I have no idea if the author's comments on what this equipment's original design was intended for is true or not. I'll bet some LICA members might know.

"Back in 1950, I'd been working at the Ford tractor dealership in Afton, MO for about 2 months, when Elmer, the foreman, told me I'd have to stay all day the next Saturday instead of getting off at noon. When I came in Saturday morning, he sent me out to the lot to get a Ford 8N and strip everything off the rear-end.

While I was doing that, he was opening a big crate with a crowbar and studying an instruction manual. Then we went to work hanging a big piece of equipment on the back of the 8N. It was the dangdest add-on I'd ever seen, all booms and hydraulic cylinders. It cost \$600, more than the tractor itself.

When we were finished, we stepped back and Elmer said what we were looking at was a grave digging attachment. The book said it could complete a grave in 20 minutes without a man ever having to step in the hole or use a shovel.

It didn't take long for construction people to find they could dig perfect footings with that booger. The huge Calvary Cemetery in North St. Louis ordered five - 8N's with the grave digging attachments, front end loaders, step-up-and-down auxiliary transmissions, and dual loaded tires.

The next time you hear someone mention a *backhoe*, just tell them what the machine was originally designed for."

Maybe some LICA member from MO can shed more light on this story. At any rate it is an interesting way to end 2011. Merry Christmas and Happy New Year to all my LICA colleagues.

Reference: Davis, Joe, Warrenton, MO, *A Very Grave Matter*, Farm & Ranch Living Magazine, June/July 2007, p46

DEEPEST SYMPATHY

FAMILY OF

**DOUG & SHERRY GYSBERS
DOUG'S BACKHOE SERVICE
CANNON FALLS**

**LOSS OF SHERRY'S SISTER
NANCY HAAS
1-7-2012**

1 White Chicken Chile

Jennifer Kispert

3-Tablespoons Olive Oil
1-medium onion (chopped)
4 oz. can chopped green chilies (drained)
3-Tablespoons flour
2-Teaspoons ground cumin
2-16oz.cans Navy or Great Northern Beans
1-14.5oz can chicken broth
1-1/2 Cup cooked chicken breast (chopped)
Shredded Monterey Jack cheese
Sour Cream
Salsa

In a large skillet, cook onion in oil for 4 minutes. Add chilies, flour & cumin. Cook & stir for 2 minutes. Add beans & broth, bring to a boil. Reduce heat. Simmer for 10 minutes or until thickened. Add chicken & cook until hot. Garnish with cheese, sour cream & salsa.

NORTHLAND TRENCHING EQUIPMENT INC.



Inter-Drain 2050 GP

Your #1 Source For New & Used Trenchers & Plows

*Trimble Laser and GPS Systems

* Huge Parts Inventory

* Service

* Rentals

*Check out our website for all the
latest Inventory and info...
www.northlandtrenching.com
E-mail: nte@hickorytech.net*

Corporate Office:

12929 410 Ave. Waseca, MN 56093
Phone: 507-835-4214 Fax: 507-835-2032

Eastern Division:

3578 N. State Road 59 Brazil, Indiana 47834
Phone: 812-835-2900 Fax: 812-835-2535

Preventing Hypothermia

Olivia Grider

Be Prepared with the proper gear. Hypothermia, a potentially fatal condition, can occur even when temperatures are above freezing, especially if you're wearing wet clothing or are exposed to brisk winds. Wind and moisture rob the body of core temperature. For example, when the temperature is 40-degrees Fahrenheit and wind speed is 3 mph, conditions for exposed skin are equivalent to a still-air temperature of 11-degrees Fahrenheit.

Certain conditions and factors increase your susceptibility to hypothermia. They include consuming nicotine, caffeine or alcohol; taking medication that inhibits the body's response to cold or impairs judgment; having a cold, diabetes or heart, vascular or thyroid problem; and being older—people become more vulnerable to cold-related illness as they age.

Signs of hypothermia include shivering, blue lips, trouble speaking, confusion, lack of coordination and fatigue. If you experience symptoms, go to a warm place, drink something warm and move your arms and legs to create muscle heat.

To prevent hypothermia:

1-Layer clothing. An inner layer of synthetic fiber such as polypropylene wicks perspiration away from skin; a middle layer of wool or synthetic fabric absorbs perspiration and retains warmth and an outer layer of nylon protects against wind and allows ventilation.

2- If water gets on your body, change into dry gear immediately. Store a plastic bag with extra gloves, hat, socks and coat in the vehicle that takes you to jobsites.

3- Find headgear designed to prevent heat loss—hats that also cover the ears and neck and are made of wool or a knit material with a windproof outer shell—at sporting goods suppliers and army surplus stores.

4- Wear waterproof, insulated boots. Place wool socks, which absorb moisture, over polyurethane socks, which wick away moisture.

5- Drink warm, non-caffeinated beverages, and take breaks in a heated space.

HAPPY VALENTINES DAY

HAPPY ST. PATRICK'S DAY

Ask us about advertising in the
MnLICA Newsletter
Today!

Agri Drain
CORPORATION
Your Partners in Water Management

35 YEAR ANNIVERSARY

We offer America's most complete selection of water management products for wetlands, ponds, lakes, controlled drainage, and subsurface irrigation. Along with tools, survey and safety equipment, and many hard to find items.

PO Box 458 - 1462 340th Street - Adair, IA 50002
Fax: 1-800-282-3353 - Email: info@agridrain.com
www.agridrain.com

For a FREE catalog or to place an order, call 1-800-232-4742.

RECRUIT A NEW MEMBER TODAY!

MNLICA membership provides a stronger united voice on behalf of our industry.

MNLICA provides services and programs which you could not do on your own without spending more money and time. Such as MSHA, OSHA, Competent Person and other trainings.

MNLICA membership provides you with a professional effective hearing in government on state and federal levels.

MNLICA provides a great networking group throughout the state and USA.

MNLICA provides your company with resources for reduced costs on products your machines use.

Light Squared disrupts plane safety gear in tests.
John Peterson,
LICA Director of Government Relations.

In the ongoing saga of Light Squared, I found an interesting article by *Bloomberg* on Dec. 16th that had this to say. "Billionaire Phillip Falcone's LghtSquared wireless service (I didn't know Falcone was the owner) disrupted safety equipment that uses the Global Positioning System (GPS) to help keep airliners from crashing into the ground. U.S. Officials said.

U.S. officials are testing for interference with GPS devices as they consider whether to let Light Squared operate the network.

CEO Sanjiv Ahuja (the fellow I thought owned the company) said the Reston, VA-based Company will work with the Federal Aviation Administration on resolving interference."

I guess all the problems haven't yet been worked out. This problem will affect many LICA members if it is not resolved. Stay tuned.

Mention Wetlands, Drainage or Permits and Someone will Mention Rinke Noonan.

KURT DETER

JOHN KOLB

GARY LEISTICO

Landowners are becoming increasingly aware of the difficulties in dealing with wetlands, drainage and acquiring permits. The DNR, NRCS, Corps of Engineers, county and local governments all may have interests that must be addressed.

Our work involves wetlands, drainage, and other water related issues, permits — areas of law that are constantly changing and becoming more specialized.

If you're facing a challenge in any of these areas, or are wondering if you could benefit from legal help, call Kurt, John or Gary at (320) 251-6700.

RINKE NOONAN
ATTORNEYS AT LAW

SUITE 700, NORWEST CENTER, 400 FIRST STREET SOUTH,
ST. CLOUD, MINNESOTA 56301 • (320) 251-6700

Wisconsin Plastic Drain Tile Corp.

Manufacture of plastic pipe and fittings for drainage.

800.362.6642



NOW OPEN
Midwest Plastic Products
Plainfield, IA

SIZES
3” – 48”
SINGLE WALL AND DUAL WALL

Free Delivery within 300 miles

Manufacturer of quality drain tile since 1972.

201 W. PLYMOUTH STREET
JEFFERSON, WI 53549
Toll Free: 1-800-362-6642
Fax: 920-674-2782
Email: dlucas@draintile.com
www.draintile.com



NLICA WINTER CONVENTION
FEBRUARY 7-12,2012
DoubleTree Hotel Downtown
San Diego,CA.

This should be a great time to go to Sunny Warm and Friendly California. The registration form is on the National LICA web-site. The reduced registration cost is \$250.00 before January 13, 2012. Reduced hotel rates need to be made by January 7, 2012 at \$129.00 (plus tax). Make you room reservations by calling 800-222-8733, Room block LICA 2012 National Convention.

There will be FUN tours for all to enjoy. Tuesday, February 7 from 1:45-5:00pm you can tour the USS Midway. Wednesday, February 8 from 9:30am to2:30pm tour the San Diego Zoo. Thursday, February 9 from 12:00pm to ??? 18 holes of Golf. You can rent clubs there. Profit from this event will go to the NLICA Scholarship Fund. Saturday, February 11, Mirimar Speed Circuit from 1:45-5:00pm.

Meetings will start on Thursday, February 9, 2012 at 8:00am and conclude on Saturday February 11, 2012 with a 7:00pm caterpillar dinner. You can write this trip off as a meeting expense!! SEE YOU THERE!!

LICA Hotel Savings Card

The LICA Hotel Savings Card Program from CLC Lodging simplifies lodging administration while saving 20-40% off hotel rates. This card improves your bottom line whenever you and your employees travel for business. There is no advanced booking required and no annual fees or minimum usage requirements.

Call toll-free at 1-866-857-9747, Option 1, or visit online at www.CheckINNcard.com to sign up for LICA’s Hotel Savings Card program from CLC Lodging today! When you join, enter the key code “LICA” and the sign-up fee is waived—a \$9.95 value! MEMBERS USE THESE BENEFITS OR LOOSE THEM!!!



MNLICA OSHA and DOT SAFETY CLASS
 209 North Hwy 71
 Sauk Centre, MN 56378
 Phone: 320-293-0882

MNLICA is offering an OSHA and DOT Safety Class being held on January 30th and 31st, 2012 at the Brad Herickhoff Shop, 209 North Hwy 71, Sauk Centre, Minnesota from 8:30 a.m. to 3:30 p.m. The cost of the class will be \$75.00 for members or \$100.00 for Non-Members. The cost includes coffee, soda, water, rolls/cookies for breaks and lunch on Monday. Registration and payment must be postmarked no later than December 30, 2011.

Contact Name(s) _____

Company _____

Address _____

City, State & Zip _____

\$75.00 Registration MnLICA Member \$ _____

\$100.00 Registration Non-MnLICA Member \$ _____

Make checks payable to MNLICA OSHA/DOT CLASS and mail to:

MNLICA
9600 S. Dennison Blvd.
Northfield, MN 55057-4547
 Phone: 507-645-6905
 E-Mail: bakken4957@gmail.com

Registration Policy: No registration will be processed without payment. A \$25.00 processing fee will be incurred on cancellations postmarked before December 30, 2011 Cancellations after December 30, 2011 will be subject to a 50% reduction in refund. All requests must be in writing.



MINNESOTA LICA SAFETY TRAINING

WITHOUT TWENTY-FIVE (25) PEOPLE IN A CLASS (They have to be preregistered a minimum of one(1) week before the date of the class, if less than twenty-five (25), THE CLASS WILL BE CANCELED!

February 7, 2012

Dennison (Kevin Bakken shop: 9600 S Dennison Blvd, Northfield, MN) 507-645-6905

The training will be from 7:30 a.m.-5:30 p.m.

Cost per person: \$100.00 for LICA members \$125.00 for nonmember

Lunch and Breaks included

Safety Training will include the following topics:

- Meet the requirements for:**
- MSHA Certification**
- Adult CPR and First Aid Training**

For more information please contact:

MNLICA

Jeanie Bakken

9600 S. Dennison Blvd, Northfield, MN 55057

Office: 1-507-645-6905

E-Mail: bakken4957@gmail.com

MOYSON RESOURCES:

Linda Moyna

1474 Benson Avenue, Fairbank, IA 50629

Office: 1-800-993-3250

E-Mail: moyson@itt.net

To register please fill out the form below and return it to:

MNLICA 9600 S. Dennison Blvd, Northfield, MN. 55057 by January 31, 2012

Name of Company: _____

Company Address: _____

Company Phone: _____

Company Representatives: _____

Precision Intakes
Full Line of
Surface Water Intakes

- 8" & 10" riser with patented 8" & 10" combination Tees.
- Also 6" square & round risers with patented reducing Tee.
- Constructed of heavy-weight, high-density polyethylene.
- Parts highly adjustable & interchangeable with others on the market.
- Orifice plate placed at tee level or at ground level.
- Exclusive locking device on each part.
- User Friendly-Priced effectively.
- Adaptor available to repair old metal or broken intakes.

Why inventory 2, when 1 serves both!

PATENTED REDUCING TEE

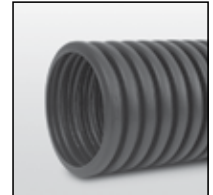
Blind End. 8" Internal Coupler.

6" 5" 4"

"Dealer Inquires Welcome"

PRECISION INTAKES
Norm & Coretha Rozendaal
2064 Republic Ave West
Monroe, IA 50170

(800) 932-7611
(641) 259-2651
(641) 259-3218 Fax



Manufacturing Quality Drainage Systems Since 1972

Contact James Beevar at **507.438.7676** or james@centurypipe.com for more information.

800.545.9546

www.centurypipe.com

Century Plastics, Inc.™ is a registered trademark of Advanced Drainage Systems, Inc.
© 2011 Advanced Drainage Systems, Inc. (AD070111) 04/11

NOTHERN NATURAL GAS

Overview

The most common form of pipeline excavation damage for Northern Natural Gas (Northern) facilities continues to be damages caused during drain tile projects.

Pipeline Damage by Drain Tillers

Damage to pipelines by drain tillers occurs mainly in the states of Iowa, Minnesota and Nebraska, occasionally in South Dakota and Wisconsin. The most common timeframes for damage to occur is during the spring and fall. While statistics show that the "Call Before You Dig" message is effective with the fulltime professional excavation contractor this is not always the case with part-time, non-professional drain tillers. An example would be a farmer that purchases drain tile installation or repair equipment and uses it only on an occasional basis for small projects on his property or neighboring properties.

Eliminate Damages

Educate all customers that use drain tile products and equipment about damage prevention safety and the potentially severe consequences of damaging a pipeline. Identify drain tile equipment dealers, manufacturers, suppliers and distributors that would partner with Northern in this outreach effort.

Outreach Objectives and Partnership Opportunities

1. Promote 811 on websites.
2. Ask manufacturers to print the 811 logo and message on their products, possibly tag their drain tile rolls with the 811 logo, include 811 stickers on equipment, on invoices, in newsletters, on receipts, on shipping boxes, etc
3. At point of sale locations ask distributors to include "Call Before You Dig" material at the time of product purchase. An example would be adding the 811 logo or other materials near the product displays.
4. Seek opportunities to offer educational damage prevention articles for websites, newsletters, owner's manuals, training material and trade magazines. Offer educational presentations for training sessions and industry meetings.

www.call811.com



Shakopee Valley News

Read More

Dave Sebald; Titan Machinery, Inc

Warm temps are cool, but they can lead to problems for septic systems

“It may not be such a happy new year for some households if we don’t get snow cover before temperatures really start to drop,” said Dan Olson, public information officer with the Minnesota Pollution Control Agency (MPCA). “Snow helps to insulate septic systems and keep them from freezing. Fortunately, temperatures across the state have remained relatively mild so far, but that could change any time.”

The University of Minnesota Onsite Sewage Treatment Program provides tips for homeowners on how to prevent septic system freeze-ups and how to deal with them should they occur:

- Place a layer of mulch eight to 12 inches thick over the pipes, tank and soil treatment system to provide extra insulation. This can be straw, leaves, hay or other loose material that will stay in place and not become compacted. This is particularly important for new systems that were installed so late in the year that vegetative cover could not be established. However, if the system is currently frozen, don’t add mulch now; it will delay thawing in the spring.
- Let the grass or native vegetation growing over the tank and soil treatment area get a little taller in the late summer and fall to provide insulation and help hold snow.
- Use water — the warmer the better — if you’re worried that your system is starting to freeze. Spread out your laundry schedule so you run one warm/hot load a day. Use the dishwasher and take hot baths. However, **DO NOT** leave water running all the time, as this will hydraulically overload the septic system.
- Going away for an extended period? Plan accordingly. Have someone use warm water in your home regularly while you are gone or have your septic tank pumped out before you leave. If a shallow tank is left full for several winter months, the sewage will become very cold and can freeze.
- Fix any leaky plumbing fixtures or appliances in your home. This will help prevent freezing problems and help your system perform better all year long.
- If you have appliances that generate very low flows, such as high-efficiency furnaces, you can put heat tape in the pipe, and have someone come by and run warm water for a while you are on vacation. Alternatively, install a small condensate pump that holds and discharges two gallons per cycle.
- Keep all vehicle, animal and human traffic off the system. This is a good rule to follow all year long as compacted snow and soils cause frost to go down deeper and faster. Pay special attention to the area between the house and the septic tank. Make sure all risers; inspection pipes and manholes have covers. Sealing them and adding insulation is a good idea. Insulation may be added during construction particularly if the top of the septic tank is within two feet of the surface.

- Keep an eye on your system. If any seeping or ponding occurs, contact a septic systems professional to help determine the cause and remedy.

Add more insulation to your system. This could include replacing pipe with insulated pipe, installing expanded foam panels over the septic tank, or adding more soil cover.

A common cause of freeze-ups are pipes that are not installed with the proper slant or that have settled, resulting in dips in the line. Where a dip or flat spot occurs, sewage can collect and freeze. Pump lines can develop a dip right next to or above the septic tank as a result of soil backfilled during tank installation settling.

If your septic system freezes, call a septic system professional. The MPCA website includes a search tool for finding certified professionals in your area. Search the Internet for "MPCA SSTS licensed business search." The pros have steamers and high-pressure jetters for thawing pipes.

Other methods used to fix a freezing problem include adding heat tape and tank heaters. Cameras can be sent down pipes to determine where freezing is occurring. If the soil treatment system is full of ice, or there is evidence of leaking, skip trying to thaw the lines leading to the treatment area as it cannot accept liquid until the area thaws in spring.

If it’s not feasible to correct a problem, the only option is using the septic tank as a holding tank until the system thaws naturally. Have a pumper empty the tank when it starts to fill up. In this situation, reduce water use by limiting the number of toilet flushes, taking short showers, and using the dishwasher at full capacity.

There are some things you should **NEVER** do to try to fix a frozen system: **DO NOT** introduce antifreeze, salt or a septic system additive into the system. **DO NOT** pump sewage onto the ground surface. **DO NOT** start a fire over the system to attempt to thaw it out. **DO NOT** run water continually to try to thaw the system. This can overload the system.

For information on keeping your system healthy all year, visit the University of Minnesota Onsite Sewage Treatment Program website. Or to Dan Olson with the MPCA.

Quality Concrete Drain Tile

- Competitive prices
- Full inventory of 5" to 48" Concrete Drain Tile
- Concrete T's, Intake Caps, Gates
- Fast delivery to your jobsite



Hector Tile Company, Inc.

721 South Main Street, Hector, Minnesota 55342

1-800-640-9910

THE NEXT GENERATION **Is Now Here.**



The New BRON Drainage Plow

Introducing the totally redesigned BRON self-propelled drainage plow. From the ground up, new features give you better control, better productivity and better comfort.

- **Balanced Weight Distribution**
- **Improved Operator Visibility**
- **Electronic Digital Controls**
- **Ergonomic Cab Comfort**
- **FOPS/ROPS Certified**
- **Tri-Core Cooling System**

BRON
POWER TO PERFORM



rwfbron.com
1.800.263.1060

EECH10723-S02-01

Meet Jan Loken of Don Loken Drainage, Inc.

In the halls of New Richland-Hartland High School Jan met Don in 1962.

They became high school sweethearts and married in 1969.

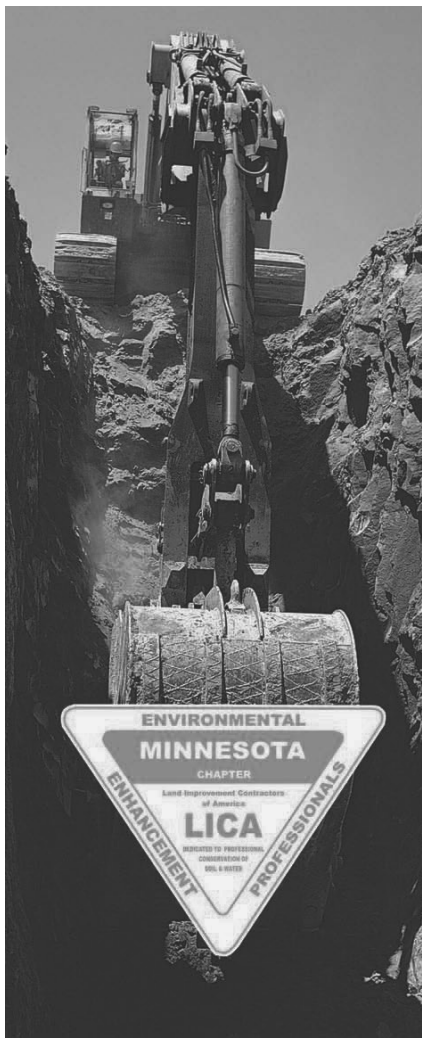
From the inception of Loken Drainage, Jan has been an integral team member serving in many capacities from receptionist, office manager to accounting. When Loken Drainage moved to Owatonna to expand operations, Jan decided to continue on with her career in a different direction. In 1986, Jan opened her own hand-painted wood craft business called “Jan’s Crafts” and went on to employ six individuals along with painters and craftsman. The business blossomed and Jan was able to travel southern Minnesota and the Twin Cities area to sell these handcrafted treasures enlisting the help of the entire family often selling at two-to-three craft shows a weekend.

In addition to crafts, Jan kept busy by helping out at a locally-owned small grocery store as a cashier and managed the local American Legion Club and serving up some of her simple and delicious recipes as the head chef.

In 2005, Jan stepped into the role of co-executive director of MNLICA until she retired last January.

Avid campers, the Lokens traveled the nation via RV, stopping at many LICA meetings along the way with their two children, Tracy and Dallas. Tracy later met and married Thomas Weber, and moved to Milwaukee, WI. She presently serves as the Programs Director for Milwaukee Achiever Literacy Services. Thomas is an operations supervisor in the direct response television industry. Dallas eventually married his high school sweetheart Nicole and lives outside of New Richland, MN. Dallas has worked side-by-side with his father and is currently purchasing the family business from Don and Jan. Nicole is a part-time substitute teacher and full-time supermom. Dallas and Nicole have three children: Dylan (8), Addison (5), and Alexis (4).

Jan is in the process of publishing a family cookbook, “*A Touch of Class – Simple and Delicious Recipes*”. She continues to enjoy embroidering and crocheting beautiful afghans for close family members and friends. Jan also loves a good book and spending quality time with her three precious grandchildren.



You protect our environment, but who's protecting you?

United Fire Group's state LICA insurance program is designed for dirt-moving contractors and includes:

- *coverages tailored to your business needs,*
- *safety group dividends,*
- *preferred pricing, and*
- *professional loss control services.*

**Let United Fire Group protect you
and your business.**

Administered by:



For more information, please contact your local United Fire Group agent, PRINS Insurance, Inc. at 800-831-8545; or email Bruce Mosier at bmosier@prinsins.com.

DIRECTORS REPORT

FEBRUARY

DON'T FORGET:

In January MnLICA will be hosting two out-state trainings. **On January 30-31, 2012 the 10 hour OSHA and a 2 hour DOT by the MN. State Highway Patrol** will be held at Sauk Centre. It will be hosted by Ag. Tech Drainage, LLC (Brad Herickhoff). This is a two day training. Invite a fellow contractor to come for the education.

The **MSHA one-day** training will be on **February 7, 2012** hosted by Kevin Bakken at his shop. **See you there!** Bring a potential member or a fellow contractor along..

Jeanie and Nordis appreciate all who either had a booth, sponsored and/or attended the State Convention at North Mankato. From what we heard back a fun and educational time was had by all!

If you want to have a training held in your area, just call Jeanie or Nordis and arrangements will be made. We appreciate all your help and ideas! Have a good rest of the warm (unusual) winter!

**February—fortnights, two—
Shortest of the months are you,
Of the winter's children last.
Why do you go by so fast?
Is it not a little strange
Once in four years you should change,
That the jolly sun should give
You another day to live?
Maybe this is only done
Since you are the smallest one;
So I make the shortest thyme
For you, as befits your time:
You're the baby of the year,
And to me so very dear,
Just because you bring the line,
"WILL YOU BE MY VALENTINE"?**

MEMBERSHIP APPLICATION

Please enroll me as a Member of the Minnesota Land Improvement Contractors Association. I understand that I will receive all member benefits, and that they will begin as soon as my application is approved and My dues are received in the State Office. My membership fee includes membership in the National Land Improvement Contractors of America.

Name: _____

Spouse: _____

Company: _____

Address: _____

City,State,Zip: _____

Phone: _____

Fax: _____

Email: _____

Birthday (for Ins.): _____

Please enclose check payable in the appropriate amount as indicated below and mail this form to:

MNLICA, 9600 South Dennison Blvd.
Northfield, MN. 55057

Contractor Member	\$350.00
Associate Member	\$200.00
Retired Member	\$ 50.00

MEMBER BENEFITS

- 1.A D & D INSURANCE (MN. Only)
- 2.**CONTRACTOR CERTIFICATION PROGRAM**
- 3.NATIONAL & STATE NEWSLETTERS
- 4.**SAFETY MANAGEMENT PROGRAMS**
- 5.OSHA TRAININGS
- 6.MSHA TRAININGS
- 7.SSTS TRAININGS
- 8.**UPDATES ON THE NEWEST LAWS and REGULATIONS; State and National**
9. FELLOWSHIP with the Friendly Competitors
- 10.**DISCOUNT PROGRAMS** Local and National
- 11.LAND & WATER MAGAZINE
- 12.**STATE/NATIONAL SCHOLARSHIPS**
For your Children/Grandchildren and Employees Children
13. **SAFETY MANUAL WITH OSHA FORMS**
14. WINTER & SUMMER CONVENTIONS
15. **ACCESS TO DRUG & ALCOHOL TESTING**
16. REWARD PROGRAM FOR THEFT and VANDALIZED EQUIPMENT
17. **GAIN LEADERSHIP SKILLS**
18. ACCESS TO A WIDE VARIETY OF EQUIPMENT SUPPLIES & ADVICE IN AREAS OF BUSINESS
19. **SELF-INSURED WORK COMP PROGRAM ACCESS (EEP)**
- 20.BEYOND PERKS CARD (Discount's on line)
21. **RETIREMENT PROGRAM**
22. REPRESENTATION ON USDA COMMITTEE
23. **REPRESENTATION on the NATIONAL WATERSHED COALITION COMMITTEE**
24. REPRESENTATION on the COMMON GROUND ALLIANCE COMMITTEE
25. **REPRESTATION with MINNESOTA and WASHINGTON DC LEGISLATORS**
26. REPRESENTATION ON MPCA COMMITTEE
27. **HAVE FUN and NETWORK WITH OTHER CONTRACTORS AROUND THE U S A**
28. PETROCON (Savings on Lubricants, Tires, Oil, etc)

LICA MISSION STATEMENT

**To promote, perpetuate and improve
The proper use of our renewable natural
Resources for the benefit of all!**

COMPLETE TRACK SERVICE New and Used Undercarriage Parts

- FINAL DRIVE AND STEERING CLUTCH PARTS & REPAIR
- LINE BORING SERVICE
- DOZER BLADE PARTS AND REPAIR
- DRAGLINE AND BACKHOE REPAIR & PARTS
- CRUSHER ROLL REBUILDING
- COMPLETE UNDERCARRIAGE REBUILDING

ALL MAKES OF MACHINES Call For Prices
(507) 387-3121

Please include machine serial number

Crawler Welding, Inc.

319 Pintail Street • Mankato, MN 56001

Jct. Hwy. 169 So. & Hwy. 68, Mankato, MN

Stacking Snow

Stacking snow in small areas can be difficult that have pedestrian traffic. Here are some tips to help keep everyone safe.

Plan Ahead

Before you begin stacking or removing snow have a plan.

1. Obtain or create a map of the location you are working in.
2. Know where entries and exits are.
3. Mark all obstructions before stacking or removal begins.
4. Be sure to also mark the drainage area.
5. Be aware of varying ground elevations in the area you are working.

Stacking Snow

1. Never pile snow in front of entries or exits.
2. Never stack snow in an area that will block the view of traffic or pedestrians.
3. Snow piles should be kept a minimum of 3 feet away from the fire hydrants.
4. When plowing store lots, never stack snow in front of shopping cart holders.
5. Never stack snow in the middle of a parking lot where it can cause visibility issues.
6. Do not stack snow around designated parking spots.
7. Never stack snow on an incline where it can melt and refreeze, causing an additional hazard.

AWARD WINNERS

ASSOCIATE OF THE YEAR

Given by Kevin Bakken
RDO-TODD KOENIGS
TOP-CON-DAN WIESE



PRESIDENT'S AWARD

Given by Mark Morreim
PRINSCO-KENT RODELIUS



CONTRACTOR OF THE YEAR
BRUCE BUCKNELL, RACINE, MN



**THANK YOU
TO THE FOLLOWING
MNLICA ASSOCIATES for their
Continued Support of Our Convention!**

- A & E CONSTRUCTION SUPPLY
- ADVANCED DRAINAGE SYSTEMS, INC.
- AGRI-DRAIN CORPORATION
- ALLIANCE PIPELINE
- CENTURY PLASTICS
- COUNTY ENTERPRISES
- EPP WORK COMP FUND
- FEDERATED MUTUAL INSURANCE CO
- GOPHER STATE ONE-CALL
- HANCOR, INC.
- KOCH PIPELINE COMPANY, LP
- MACKENZIE AGENCY
- MATT MARING AUCTION SERVICE
- MC PHERSON CROP MANAGEMENT INC
- MID-TECH SERVICES, INC.
- MN DEPARTMENT OF AGRICULTURE
- MN SOYBEAN GROWERS ASSOCIATION
- NORTHERN NATURAL GAS COMPANY
- NORTHLAND TRENCHING EQUIPMENT INC
- PORT INDUSTRIES INC
- PRECISION INTAKES LTD
- PRINS INSURANCE
- PRINSCO INC
- RDO EQUIPMENT COMPANY
- RWF BRON
- ROAD MACHINERY & SUPPLIES COMPANY
- RUST SALES INC
- TITAN MACHINERY
- WILLMAR PRECAST COMPANY
- WISCONSIN PLASTIC DRAIN TILE CORP
- ZIEGLER/CAT INC

**ALL THE MEMBERS WHO ATTENDED THE
TRADESHOW AND CONVENTION EVENTS!**

MNLICA WEB MAIL

To get items on the MNLICA Web page please contact Mike Lehman at 507-278-4643 or you may e-mail him at air-row@charter.net

**WOLFE PLOWS
WOLFE 450 XLT PLOW**



**WOLFE PLOWS, CHAIN, AND WHEEL
TRENCHERS
PARSONS/KOEHRING PARTS & SERVICE**

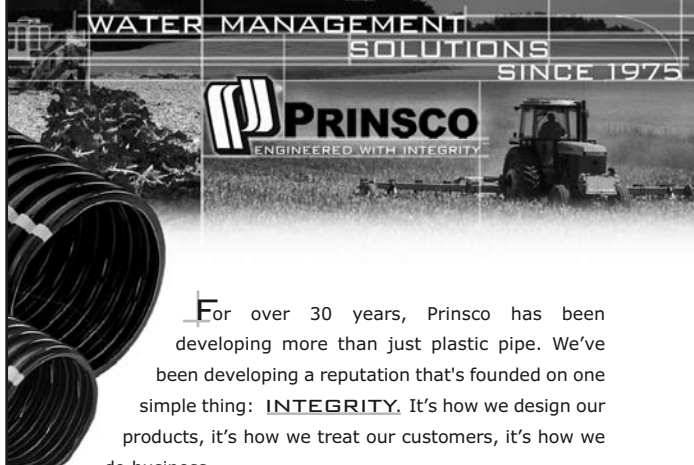
A&E Construction Supply
410 N 5th Ave E
Truman MN 56088
(800)736-3413



www.a-econstsupply.com
email: aeconst@frontiernet.net

PROVEN PERFORMANCE / BUILT TO LAST

**WATER MANAGEMENT
SOLUTIONS
SINCE 1975**



PRINSCO
ENGINEERED WITH INTEGRITY

For over 30 years, Prinsco has been developing more than just plastic pipe. We've been developing a reputation that's founded on one simple thing: **INTEGRITY**. It's how we design our products, it's how we treat our customers, it's how we do business.

Look for our **GOLD STRIPE** of quality to ensure your pipe has been engineered with integrity.

800.992.1725 | WWW.PRINSCO.COM

CORPORATE HEADQUARTERS:
1717 16th Street NE | 3rd Floor | Willmar, MN 56201

LOCATIONS: Fairfax, MN | Prinsburg, MN | Rose Creek, MN | Chatsworth, IL
Fort Dodge, IA | Jesup, IA | Bethany, MO | Fresno, CA

CASE

CONSTRUCTION

N-SERIES

Stronger Everywhere.



Construction guys are a demanding bunch. You want it stronger, faster, and you want it right now. Introducing the N-Series. It's everything we know. And everything we've heard. You said you wanted more backhoe power for utility work, so we gave the N-Series the PowerLift™ feature to dominate the toughest tundra with power to spare. You demanded more trenching control, so we created ProControl™ to help dig the straightest lines every time. And you asked for better visibility, so we gave you ¾ rear windows for improved communication with spotters and open air flow. The list goes on and on. Step up to the new N Series Loader Backhoe.

Tough in the Tread.

Get big machine durability and efficiency with our new Compact Track Loaders. Featuring proven Case undercarriage technologies, these mini-brutes deliver long component life. Permanently sealed rollers and idlers assure reliable performance. These Compact Track Loaders give you the toughness your jobs demand. Available in three models with 70 net hp to 84 net hp, Tier III engines. Mechanical or Electric/Hydraulic controls (ISO or "H" pattern) optional on select units.



Big Power. Compact Machine.

Case CX Compact Excavators deliver traditional excavator power to compact and restricted job sites. Through narrow doorways, against buildings or between structures, the Case CX Compact Excavators slip onto the tightest spaces to provide all the power and performance you need. Pattern selector standard on all five models ranging from 3240 pounds to 10,261 pounds.

Titan Machinery has factory trained technicians to keep your new and used equipment at optimum performance. The parts department is fully stocked for all your maintenance needs. Financing and Leasing plans available. Call or stop by at one of our five convenient locations:

Shakopee	Rogers
952-445-5400	763-428-5099
La Crosse	Duluth
608-788-1025	218-727-2827

TITAN

MACHINERY

Visit us on the web: www.titanmachinery.com

OFFICERS

PRESIDENT

Mark Morreim
Morreim Drainage, Inc.
71610 263rd Street
Albert Lea, MN. 55007
507-826-3449

VICE PRESIDENT

Karlen Nelson
Nelson Brothers Tiling
43480 Co. Rd. 4
Nicollet, MN. 56074
507-225-9928

TREASURER

Doug Gysbers
Doug's Back-Hoe Service
6551 357th Street Way
Cannon Falls, MN 55009

CHAIRMAN

Kevin Bakken
Bakken Excavating, LLC
9600 South Dennison Blvd.
Northfield, MN. 55057
612-328-2784

MNLICA OFFICE

Nordis Estrem-Exec. Director
Estrem Excavating, Inc.
4605 County 49 Blvd.
Dennison, MN. 55018
dnestrem@frontiernet.net
Cell: 507-649-1771
Phone: 507-789-5725
Fax: 507-789-6033

Jeanie Bakken
9600 South Dennison Blvd.
Northfield, MN. 55057
bakken4957@gmail.com
507-645-6905
Cell: 651-343-5866
Fax: 507-645-1654

NATIONAL LICA

3080 Ogden Avenue
Suite 300
Lisle, IL. 60532
Phone: 630-548-1984
Fax: 630-548-9189

AREA STATE DIRECTORS

Mike Lehman-
Air-Row Farm Land Drainage Eng.
Mankato, MN. 56001

Bruce Holst-**SE Area Chair**
Bruce's Back-hoe Service, Inc.
Goodhue, MN. 55027

Don Estrem-**SE Sec.**
Estrem Excavating, Inc.
Dennison, MN. 55018

Don Loken
Don Loken Exc. & Drainage
Owatonna, MN. 55060

Karlen Nelson-**SW & NO. Area Chair**
Nelson Brothers Tiling
Nicollet, MN. 56074

Stu Frazeur
Stu Frazeur Tiling
Canby, MN. 56220

Justin Wildfeuer
Gass Trenching, Inc.
Fulda, MN. 56131

Greg Walsh
Greg Walsh Enterprises
Murdock, MN. 56271

Otto Templin
E & T Contracting, Inc.
Hutchinson, MN. 55350

Mark Gregor
Gregor Tiling
Minnesota Lake, MN. 56068

Darren Anderson
Anderson Rock & Lime, Inc.
Cannon Falls, MN. 55009

Kevin Ellingson
Ellingson Company, Inc.
West Concord, MN. 55985

Doug Breberg
Larson Tiling, Inc.
Dawson, MN. 56232

Roger Molenaar-**Retired**
Molenaar Drainage
Renville, MN. 56284

Kent Rodelius-**Associate**
Prinsco, Inc.
Willmar, MN. 56201

James Becvar-**Associate**
Century Plastics, Inc.
Hayfield, MN. 55940

2012 UPCOMING EVENTS

MNLICA Web-site:www.mnllica.org

2012

January 30-31	OSHA 10 hour training DOT Lock-out Tag-out 2-hour-Training	Sauk Centre, MN Brad Herickhoff Shop
February 7	MSHA	Kevin Bakken Shop, Northfield
February 7-12	NLICA Winter Convention	San Diego, CA Double Tree Hotel
March	Spring Board Meeting	to be determined



MNLICA

9600 S. Dennison Blvd.
Northfield, MN 55057

PRSRT STD
US POSTAGE PAID
OWATONNA MN
PERMIT NO 41

Address Service Requested

THE LICA CREED

*Land, the foundation of the nation,
the basis of all wealth,
the heritage of the wise, the thrifty and prudent,
the poor man's joy and comfort,
the silent partner of man,
the producer of food, fiber and fuel,
the basis of factories,
the foundation of banks.*

*All that man builds is from the land.
We often take it for granted, or even abuse it,
and yet many unthinkingly and unknowingly pass the land by.
What man finally does with the land
will be the deciding factor in his survival.*