

June/July
2026

MINNESOTA LICA NEWS

LAND IMPROVEMENT CONTRACTORS OF AMERICA • MINNESOTA CHAPTER

2570 130th St.
Dawson, MN 56232

www.mnlica.org
mnlica2@gmail.com

PRESIDENT

Jesse James

VICE PRESIDENT

Vacant

**CHAIRMAN OF
THE BOARD**

Dallas Loken

TREASURER

Mark Olsen

**BOARD
MEMBERS**

Mark Morreim

Karlen Nelson

Everett Garlisch

Brad Herickhoff

Ryan Yokiel

Mike Lehmann

DeeAnn Larson

Debra Olsen

RETIRED

Don Loken

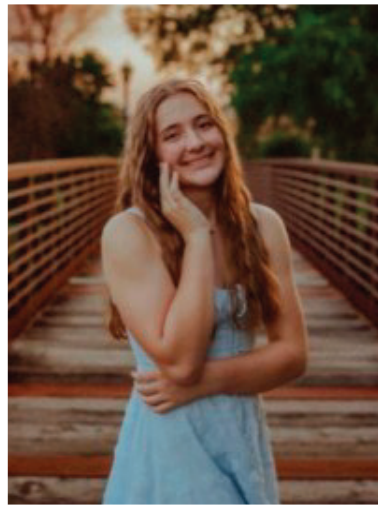
ASSOCIATE

Vacant

EXECUTIVE DIRECTOR

Jennifer Breberg

2026 MN LICA SCHOLARSHIP WINNERS!



**Juliette Matheis,
Adams, MN**

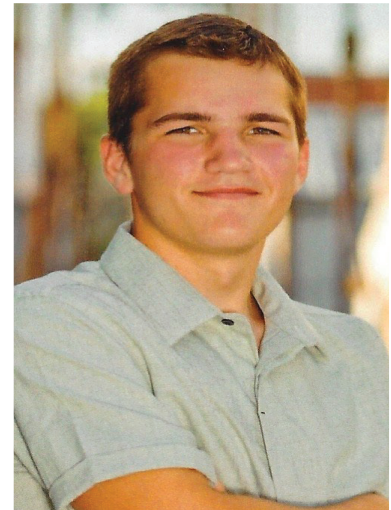
**Parents Jill Kaufman &
Joe Matheis**

**Graduate of
Southland Senior High
School**

**Ethan Anderson
Goodhue, MN**

**Parents Clint & Nicole
Anderson**

**Graduate of
Zumbrota Mazeppa
High School**





**GREETINGS
From Your
PRESIDENT**

Well everyone, just like that summer is right around the corner. It feels like spring came and went in the blink of an eye. Have to admit really liking the cooler spring we are having. Can't say the same for the crops but as you drive around and look in the fields, starting to see a little life poking through the dirt.

With the weather working in our favor hopefully everyone was able to get most of their spring projects done in time to get ready for the summer projects ahead. I'm not sure how it is with everyone else but it seems like when summer hits, everyone wants you at their place at the same time. So, to keep everything scheduled and in order can be a chore most days. But I guess if it was easy, everyone would do it.

Now as summer gets underway, I hope everyone has a safe, productive season and gets the chance to enjoy local events, community gatherings, and time with family and friends. Maybe even make time to take a little vacation some-where, because before you know it summer is gone.

I'd also like to take time to congratulate all of the graduates this year, whether from high school or college. Best wishes to each of you as you begin the next chapter and pursue new opportunities.

Sincerely,
Jesse James
MN LICA President



**MN LICA BOARD MEETING
THURSDAY, JUNE 18, 2026
6:00 PM
BEST WESTERN PLUS,
NEW ULM, MN**

FEATURES

Presidents Report.....	2
MN LICA Board Meeting Notice	2
MN LICA Associates.....	3
Dad Joke.....	4
FarmAmerica Drainage Project.....	6
Executive Director's Report.....	11
Membership Form & Benefits.....	12-13
NEW - LICA Virtual Summer Meeting	14
LICA Safety Portal	17
Board Meeting Attendance	18
Board Member Contact Information.....	19
MNLICA Upcoming Events	19

**MNLICA Web-Site; www.mnlca.org
E-mail: mnlca2@gmail.com**

MN LICA Associates

A & E CONSTRUCTION SUPPLY	MITKO
ADVANCED DRAINAGE SYSTEMS	MN DEPT OF AGRICULTURE
AGRI DRIAN CORPORATION	NORTHERN NATURAL GAS
BUFFALO RIDGE CONCRETE	NORTHLAND TRENCHING EQUIP
CARRY PUMPS	NUSS TRUCK & EQUIPMENT
COUNTRY ENTERPRISES	PRECISION INTAKES
CROSSROADS TRAILER SALES	PRINS INSURANCE
DAKOTA SUPPLY GROUP	PRINSCO
FEDERATED INSURANCE	PURPLE WAVE AUCTIONS
FIELD FLOW SOLUTIONS	RDO EQUIPMENT COMPANY
FRATCO	RFW BRON
GK TECHNOLOGY	RINKE NOONAN LAW FIRM
GRINNELL MUTUAL INSURANCE	ROAD MACHINERY & SUPPLIES
INTEGRITY AUCTIONS & SALES	SCHAEFFER'S OIL
ISG	TITAN MACHINERY
KAHN TILE SUPPLY	UNIVERSITY OF MN
KNOR MFG/HYPRO EQUIPMENT	ZIEGLER EQUIPMENT
MID AMERICAN TRENCHERS	
MID TECH SERVICES	THANK YOU !

Secure the future for your family...your business...your dreams

No matter what kind of operation you run, you have a remarkable capacity for strategy, planning years into the future despite an incalculable number of variables

Greco & Associates can help ensure your business continues to thrive for years to come and that your family and employees remain protected, no matter what the future holds.

- We help owners understand the consequences of operating without a written plan
- Making sure "a" succession plan dovetails with your estate and wealth transfer strategies.
- Multi-generational "bloodline" planning. Insurance positioning and risk management reviews
- Structuring and funding well-thought-out buy/sell arrangements between shareholders
 - Contingency planning and business continuation planning.
 - Key employee retention strategies.
 - Business Valuation

No Charge for Initial Consultation and Business Valuation for LICA Members

Trusted for 57 years
GREG GRECO MBA CEP
1727 UNIVERSITY AVE
WATERLOO, IA 50701
319-234-5723
greg@grecofinancial.com



PRECISION INTAKES

2064 Republic Ave • Monroe, IA 50170

SURFACE WATER INTAKES



- 6"-8"-10" SIZING
- HIGHLY ADJUSTABLE
- INTERCHANGEABLE
- USER FRIENDLY
- EXCLUSIVE TWIST LOCK DESIGN

800-932-7611
OFFICE@PRECISIONINTAKES.COM

"Dealer Inquiries Welcome"

www.precisionintakes.com



DAD JOKES

Construction humor?

Always under construction!



We've got your back

We understand how hard you work during the tiling season, that's why we are out in the field with you, answering questions, finding solutions and making sure you have pipe when and where you need it. Dig deep, go hard and count on us to have your back.



Find a Sales Rep in your area
prinsco.com/ag-sales



Farmamerica Drainage Project Showcases Modern Water Management in Minnesota

Written by: Tim Radatz, Discovery Farms Coordinator for MAWRC

Minnesota's drainage industry continues to play a critical role in both farm productivity and environmental stewardship and a new project at Farmamerica is helping demonstrate just how impactful modern drainage systems can be.

Located near Waseca, the Farmamerica Drainage Water Management Demonstration and Evaluation project is part of the Discovery Farms Minnesota program. This initiative is designed to generate real-world, field-scale data that helps farmers, contractors, and conservation professionals better understand how water moves through agricultural systems and how improved drainage design can enhance both profitability and sustainability.

A Real-World Demonstration Site

The Farmamerica project represents a significant investment in both infrastructure and education. Spanning roughly 120 acres, the site includes a newly installed tile drainage system with controlled drainage capabilities across multiple management zones.

Unlike traditional systems, controlled drainage allows operators to manage the timing and amount of water leaving a field. This added level of control has the potential to reduce nutrient loss, improve soil health, and optimize crop performance all while maintaining the drainage needed for timely field operations.

The system also includes monitoring equipment that tracks water flow, nitrate levels, and other key metrics. By comparing conventionally drained areas with those using drainage water management, the project is building a clearer picture of the agronomic and environmental benefits of modern drainage practices.

Why This Matters to Drainage Contractors

For Minnesota's tile contractors, projects like Farmamerica are especially valuable. One of the biggest barriers to adopting drainage water management has been a lack of local data and familiarity with the practice.

This project helps bridge that gap by:

- Demonstrating installation and design of controlled drainage systems in real field conditions
- Providing measurable data on water quality, yield, and system performance

Offering field days, technical resources, and hands-on learning opportunities

As adoption grows, contractors will increasingly be called upon to design and install systems that go beyond traditional drainage, incorporating control structures, zoning, and precision water management.

Partnerships Driving Progress

The success of the Farmamerica drainage project is rooted in strong collaboration. The effort is led by the Minnesota Agricultural Water Resource Center in partnership with Discovery Farms Minnesota, the Minnesota Department of Agriculture, and Farmamerica itself. The project was made possible from a grant provided by the Minnesota Natural Resource Conservation Service (NRCS).

Private industry has also played a key role, contributing materials, expertise, and installation support. This type of public-private partnership ensures that the research is grounded in real-world conditions and directly relevant to both farmers and contractors.

WELL EQUIPPED TO HELP YOUR OPERATION GROW.



RDO Equipment Co. is more than an equipment dealer. We're your partner. Our team members are driven to make your operation more productive.

Minnesota
RDOequipment.com



FREE

VISUAL GUIDES FOR SMARTER WATER MANAGEMENT

Get **six** downloadable infographics that cover some of today's most effective conservation practices, from engineered infrastructure to nature-based practices.



Scan the code or visit fratco.com/conservation-guides

Fratco is proud to support solutions that protect *land, water,* and the *future*. Because in the end, we're all downstream.



BRON
POWER TO PERFORM



CANADA: 519.421.0036
MN, USA: 507.547.2864
1.800.263.1060
FIND OUT MORE ONLINE
WWW.RWFBRON.COM

BRON 585 SELF-PROPELLED DRAINAGE PLOW

BRON is a registered trademark of RWF Industries, a division of Roberts Welding & Fabricating Ltd.

YOUR LOCAL DRAINAGE EXPERTS



Architecture
Engineering
Environmental
Planning
ISGInc.com



Innovative Water MANAGEMENT

The power to control water is in your hands.

From wet springs to dry summers, **keep your fields at the perfect moisture level automatically** with Agri Drain's Smart Drainage System®.

- ✓ Increase Yields
- ✓ Precision Water Level Control
- ✓ Conserve and Improve Soil & Water



LEARN MORE



641-742-5211

info@agridrain.com



Country Enterprises S
INC.

INTAKE COVERS


CUSTOM MARKING FLAGS

TILE CUTTERS & PROBES

PARTNERS 3
innovation • quality • service

1-800-349-8752
www.countryent.net

BRON Add on Plow



MITKO

SPECIALTY SALES & SERVICE
www.mitkollc.com

1954 N Linn Ave
New Hampton, IA 50659
Phone: 641-394-3141 | Fax: 641-394-3823




MID-TECH SERVICES

Ag Drainage Equipment * Lasers * GPS


New Hampton, IA 50659
641-394-4756
www.midtechservices.com



Trimble
Authorized Service Provider



WOLFE 540 SUPER PLOW



The Wolfe 540 Super Plow Is WOLFE'S BEST SELLING MACHINE In The Field Drainage Industry

3 Available CAT Engines,
from 540 HP up to 600 HP
Up to 7.5' digging depth
3 Speed Machine
180,000 ft-lb Final Drives & Air Ride Cab
3"-15" Boots
15", 18" & 24" Dual Wall Boots

WOLFE

CALL US TODAY
1-800-736-3413
PLOWANDTRENCHER.COM

RECLAIM YOUR LEGAL GROUND

DRAINAGE

WETLANDS • DRAINAGE • COMPLIANCE • PERMITS

Farmers, landowners, and land improvement contractors are becoming increasingly aware of the legal and permitting challenges created by wetlands, drainage, and conservation compliance. Working with a team of attorneys experienced in navigating the DNR, NRCS, Corps of Engineers, EPA, U.S. FWS, and county and local governments regulations adds value to the success of your project.



RINKE NOONAN
attorneys at law

RINKENOONAN.COM

Executive Director's Report

Hello Everyone!

Have you participated in any of the virtual National LICA committee meetings yet? I would encourage you to set aside about an hour of your VERY busy schedule and sign into one or all of the committee meetings. LICA committees are where ideas turn into ACTIONS. They bring members together to share experiences, challenge what's working and move the association for-ward. Staying connected through regular conversations is how we continue to grow, strengthen our network, and build on the ideas that drive this industry.

If you take a look at the benefits list you will see some exciting additions to the list. Also, check out the benefits section of the National LICA website. The latest additions to the available benefits is really exciting and there are more good things to come.

The MN LICA Board will be discussing plans for the scholarship fundraiser in September and ideas to better the Convention experience for Minnesota LICA members at the next board meeting June 18th. Ideas are always welcome!

I want to extend a Congratulations to the two scholarship recipients this year. They are very intelligent and ambitious young people. Well deserving of the Scholarship Award!

Jennifer Breberg, Executive Director MN LICA

**Minnesota Land Improvement
Contractors of America**

2570 130th Str. • Dawson, MN 56232
(320) 226-6398 • Email: mnlica2@gmail.com

MEMBERSHIP APPLICATION - \$400.00

***Make checks payable to: MNLICA
Please fill out the form below. Thank you.***

Company Name: _____

Member Name: _____ Spouse's Name: _____

Street Address: _____

Mailing Address: _____

City: _____ State: _____ Zip: _____ County: _____

Phone (_____) _____ Cell Phone (_____) _____

Email: _____ Website (if applicable) _____

If you're new, how did you hear about LICA? _____

Check All Services Provided

- | | |
|---|--|
| <input type="checkbox"/> CH - Concrete/Hardscaping | <input type="checkbox"/> PD - Ponds/Dams |
| <input type="checkbox"/> CR - Crane Service | <input type="checkbox"/> RP - Roads/Paving |
| <input type="checkbox"/> DB - Directional Boring | <input type="checkbox"/> SP - Site Prep./Demolition |
| <input type="checkbox"/> DW - Drainage/Water Mgmt./Irrigation | <input type="checkbox"/> SS - Septic Systems/Onsite Wastewater Treatment |
| <input type="checkbox"/> EM - Earthmoving/Grading/Leveling | <input type="checkbox"/> TH - Trucking/Hauling |
| <input type="checkbox"/> EX - Excavating/Land Clearing | <input type="checkbox"/> TW - Terraces/Waterways |
| <input type="checkbox"/> GR - Gravel/Rock Production | <input type="checkbox"/> UU - Underground Utilities |
| <input type="checkbox"/> LS - Landscaping/Seeding/Sod | <input type="checkbox"/> Other: _____ |
| <input type="checkbox"/> OD - Open Ditch Work/Dredging | |

Active Contractor Membership - \$400

Active members are individuals engaged in the business of entering into contracts for performing work that will result in soil, land, natural resource conservation or rehabilitation, water conservation, control and prevention of soil erosion, depletion and misuse of natural resources and soil and water pollution and contamination.

Secondary Membership - \$50 (Secondary Members will receive MN Newsletter)

Secondary members are individuals employed by an active member in the business that makes the active member eligible for membership.

Name: _____

Address: _____

LICA AND MNLICA BENEFITS

- ◆ National & State Conventions
- ◆ Minnesota LICA Scholarship Award
- ◆ National LICA Scholarship Award
- ◆ Newsletter Communication
- ◆ Legislative Representation
- ◆ Exchange of Ideas
- ◆ Advertising
- ◆ Friendship
- ◆ Pride of Excellence
- ◆ National Member Directory
- ◆ U of M Accredited Trainings
- ◆ MSHA & OSHA Accredited Trainings
- ◆ Accredited First Aid & Adult CPR Trainings
- ◆ Access to a Wide variety of Associate Members
 - for Equipment Supplies & Advice in all Areas of Business
- ◆ National LICA Contractor Magazine
- ◆ Caterpillar Extended Powertrain Protection Program
- ◆ The LICA Safety Portal
- ◆ Machinery Trader Member Benefit Promotion,
 - Buy & Sell Equipment: Inventory Mgmt System
- ◆ World Insurance:
 - Health Insurance
 - 401K Employee Program
 - Payroll & HR
- ◆ Clean Fire Discount
- ◆ ConX - Manage Workforce demands
- ◆ Busy Busy time tracking –Discounted
- ◆ Big Switch Products—Discounted
- ◆ Business & Family Legacy Planning
- ◆ Big Iron Auctions - Benefit
- ◆ ADMC Membership Discount
- ◆ CDL Entry Level Driver Training Program
- ◆ Titanium Payments - Credit Card Processing
- ◆ Red Wing Safety Footwear Program
- ◆ Petrocon National Purchasing Program
- ◆ GM Fleet - Vehicle savings for LICA Members
- ◆ Caterpillar Machine & Attachment Association Discount Program
- ◆ Con Equip: Construction Equipment Parts

For the most up-to-date listings, go to:

benefits@LICANational.org

(PLEASE NOTE THE CHANGE IN EMAIL ADDRESS)

ATTENTION: ATTEND THE 2026 NATIONAL LICA SUMMER BOARD MEETING FROM THE COMFORT OF YOUR OFFICE!
Here is your opportunity to attend a LICA Summer board meeting and no travel is required. Committee meetings will all be held prior to the Virtual Board meeting in July.

DATE: Monday, July 20, 2026

LOCATION: Google Meet (Set-up by National LICA)

The 2026 National LICA Virtual Board Meeting will take place **Monday, July 20, 2026 (exact time TBA)**. This meeting brings together National LICA leadership from across the country to discuss key issues, review committee activity, and help guide the direction of the association.

In the weeks leading up to the Board Meeting, National LICA Committees will hold virtual meetings to review ongoing work, discuss important industry and association issues, and provide input that helps shape the priorities and direction of National LICA. National LICA will announce the dates and times for each committee meeting in advance and will provide meeting links prior to each session.

These virtual meetings give members the opportunity to stay engaged, participate in discussions, and remain connected to the work happening across the association.

Additional details on meeting times and access information will be provided by the National Office and shared with State Chapters as the meetings approach.

INFORMATION FOR ALL COMMITTEE MEETINGS AND UPDATES CONCERNING THE BOARD MEETING WILL BE SENT TO YOU VIA AN EMAIL FROM ALLISON HACK, NATIONAL OFFICE STAFF. IF YOU HAVE NOT BEEN RECEIVING THESE EMAILS, CONTACT ME.

Committee meetings will be scheduled prior to the board meeting in July. Additional committee meetings will be scheduled. Updates, additions and changes will be posted via email and social media, so be watching for these.

By-Laws Committee - June 11 - 7:00 PM ET (Tentative)

Conservation, Excavation & Earthmoving Committee — June 2 - 6:00 PM CT

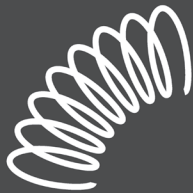
Education & Technology Committee - June 10 - 6:00 PM CT

Legislative Committee - June 3 - 6:00 PM CT

Long Term Planning/Past Presidents - June 9 - 7:00 PM ET

Membership Committee - June 8 - 6:00 PM CT

Durability meets sustainability.



PIPE FLEXIBILITY

+261%



TENSILE STRENGTH

+32%



PIPE STIFFNESS

+39%

ALL ABOVE THE STANDARD ASTM REQUIREMENT

Forget the sustainability stereotypes others tell you. ADS recycled material performs equally to virgin and undergoes the same rigorous ASTM testing. As one of North America's largest plastic recycling companies, ADS is proud to provide proof of our sustainable impact.



The proof is in the performance.
The numbers don't lie. Scan the code to learn more.





✉ prins@prinsins.com
☎ 1-800-831-8545

Serving the Land Improvement Contractor for 30+ years

Northland Trenching Equipment, LLC

"We are the largest volume supplier for this type of equipment in the US"



Inter-Drain
Plows & Trenchers

Corporate Office
12929 410th Avenue
Waseca, MN 56093
Phone: (507) 835-4214
Fax: (507) 835-2032

Eastern Division - Indiana
3578 North State Road 59
Brazil, IN 47834
Phone: (812) 835-2900
Fax: (812) 835-2535

Email: nte@hickorytech.net
www.northlandtrenching.com

 **Trimble**  TRIMBLE GPS SYSTEMS



The Inter-Drain plow, three types, double link, single cantilever, or single link, each in three sizes. Cat, Cummins or Volvo power. Offset available.



The Inter-Drain chain trencher. Four size choices, mechanical or hydraulic chain drive, vertical and offset available. Cummins, Volvo or Cat power.

 FULL SERVICE AND REBUILDS

 HUGE PARTS INVENTORY





The LICA Safety Portal

FREE FOR LICA CONTRACTOR MEMBERS



- 🔍 **Toolbox Talks**
- 🔍 **Quizzes & Training Materials**
- 🔍 **OSHA Recordkeeping**
- 🔍 **State Specific Resources**

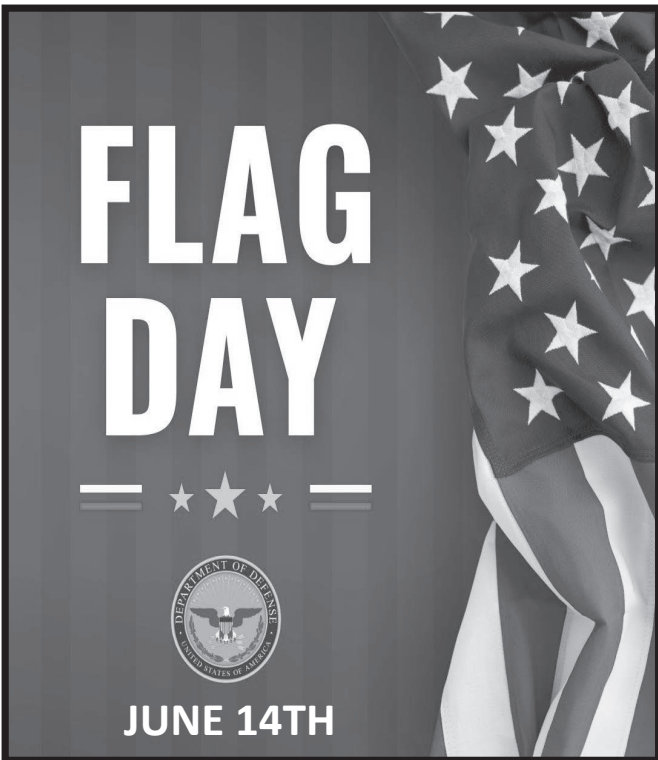
On-demand, customizable resource, just a point and click away. Access suggested materials or quickly find exactly what you need with easy-to-use search tools.

Email:
safetyportal@LICANational.org
To get started.



Contact Bruce Mosier or Kari Van Es at Prins Insurance for additional information.
(800) 831-8545 | Email: kvanes@prinsins.com | www.prinsins.com

REMINDER: MARK YOUR CALENDAR TO TAKE PART IN THE VIRTUAL NATIONAL LICA BOARD MEETING JULY 20TH! WATCH FOR THE EMAIL!!!



2026 Board Member Meeting Attendance
A = Absent P = Present C = Cancelled

Board Member	Jan	Mar	June	Aug	Nov
Pres. Jesse James	P	P			
VP -	V	V			
Treas. Mark Olsen	A	A			
Chrmn Dallas Loken	P	P			
Mark Morreim	P	P			
Karlen Nelson	A	P			
Everett Garlich	P	P			
Brad Herickhoff	P	P			
Mike Lehmann	P	P			
Dee Ann Larson	P	P			
Debra Olsen	A	A			
Ryan Yokiell	P	P			
Don Loken	P	P			
Associate	A	V			
Ex Dir. J. Breberg	P	P			

OFFICERS

PRESIDENT

Jesse James
Steve James Excavating
3835 Park Dr. NW
Owatonna, MN 55060

VICE PRESIDENT

Vacant

TREASURER

Mark Olsen
Big Woods Excavating LLC
12825 190th Street East
Nerstrand, MN 55053

CHAIRMAN of the Board

Dallas Loken
Loken Excavating & Drainage
3695 Hoffman Dr. NW
Owatonna, MN 55060

MNLICA Executive Director

Jennifer Breberg
2570 130th Str
Dawson, MN 56232
mnlica2@gmail.com
Phone: 320-226-6398

STATE DIRECTORS

Mark Morreim
Morreim Drainage Inc.
71610 263rd Street
Albert Lea, MN

Everett Garlisch
Eiden Farm Drainage
35127 746th Avenue
St. James, MN

DeeAnn Larson
Landscape Gal LLC
3343 Union Lake Trail
Northfield, MN 55057

Ryan Yokiell
Ground Works Backhoe
16892 605th Ave
Janesville, MN 56048

Retired:
Don Loken
Loken Excavating & Drainage
3695 Hoffman Drive NW
Owatonna, MN 55060

Karlen Nelson
Nelson Brothers Tiling LLC
43480 County Road 4
Nicollet, MN 56074

Brad Herickhoff
Ag Tech Drainage, LLC
40536 US HWY 71
Sauk Center, MN 56378

Michael Lehmann
Air-Row Surveying LLC.
19184 State Hwy 22
Mankato, MN 56001

Deb Olsen
Big Woods Excavating, LLC
12825 190th Street
Nerstrand, MN 55053

Associates
Vacant

NATIONAL LICA
3080 Ogden Avenue
Suite 300
Lisle, IL. 60532
Phone: 630-548-1984

2026 UPCOMING EVENTS

Web-site: www.mnlica.org

Summer Board Meeting

June 18, 2026, 6:00 PM - Best Western Plus, New Ulm, MN

Fall Board Meeting

August 20, 2026, 6:00 PM - Best Western Plus, New Ulm, MN

Fall Scholarship Fundraiser - September, 2026

Place and specific date TBD

Winter Board Meeting

November 12, 2026, 5:00 PM - Best Western Plus, New Ulm, MN



MNLICA
2570 130th Street
Dawson, MN 56232

PRSRT STD
US POSTAGE PAID
OWATONNA MN
PERMIT NO 41

Address Service Requested

THE LICA CREED

*Land, the foundation of the nation,
the basis of all wealth,
the heritage of the wise, the thrifty and prudent,
the poor man's joy and comfort,
the silent partner of man,
the producer of food, fiber and fuel,
the basis of factories,
the foundation of banks.*

*All that man builds is from the land.
We often take it for granted, or even abuse it,
and yet many unthinkingly and unknowingly pass the land by.
What man finally does with the land
will be the deciding factor in his survival.*