



MNLICA

NEWS

Land Improvement Contractors of America • Minnesota Chapter

MNLICA GOLF SCHOLARSHIP TOURNAMENT

Thank you Associate Sponsors:

Advanced Drainage Systems, Agri-Drain, Century Plastics, Continental Western Ins, EEP, Federated Mutual Ins, Precision Intakes LTD, Prins Ins., Prinsco Inc, RDO Equipment Co, Road Machinery & Supply Co, Rossco Equipment Inc

Pages 7 & 17

PRESIDENT

Kevin Bakken

VICE PRESIDENT

Mark Morreim

CHAIRMAN OF THE BOARD

Doug Gysbers

TREASURER

Doug Gysbers

SE BOARD MEMBERS

Chuck Wingert

Mark Gregor

Don Loken

Don Estrem

Kevin Ellingson

Darrin Anderson

Bruce Holst

SW/N BOARD MEMBERS

Karlen Nelson

Otto Templin

Greg Walsh

Stu Frazeur

Justin Wildfeuer

Doug Breberg

RETIRED

Roger Molenaar

ASSOCIATES

Kent Rodelius

James Becvar

EDITOR

Nordis Estrem



1st Place
Barnett/RDO Team



Ready to start



Brett Dohrmann
(3rd from the left),
proud winner of the
longest putt sponsored
by Federated Ins.

Make sure all MNLICA high school seniors apply for the 2-one thousand dollar scholarships and the National LICA 8-five hundred dollar scholarships by March 2012. Get forms on-line or at the MNLICA office.

WELCOME New Member

Dan Sorheim

Concrete Precast Masonry, Inc. • Faribault, MN



GREETINGS
From Your
PRESIDENT

Greetings from the MnLICA oval office. Ha! Ha! Ha! I'm hoping that everyone has had a good productive summer. Fall is here and old man winter will soon be whispering in our ears. Time to be thinking about those last minute jobs and preparing for the cold weather.

How many of you have been using the Petrocon Program. My brother Ron and I have been purchasing replacement truck tires for our quad-axle dump truck. We believe we have bought some really good tires at a good price. If you're looking strictly at buying the cheapest tires then the program is not for you. But if you're looking for a good quality long lasting tire you can save some bucks. We're buying tires below the dealers cost.

On September 12th, 2011 MnLICA helped put on a soils class for ISTS with the University of Minnesota. Dave Gustafson and Dan Wheeler from the University of Minnesota and Mark Wespetal from the MPCA put together a very informative class and field day. Bruce Bucknell of Racine lined up the town hall for the class room phase and the field day afternoon was held at his sand pit. Todd Bucknell dug the soil pits. Thank you Bruce and Todd for your contributions to make the day run smoothly and Thank you to Bruce and Linda's daughter Harla (Harla's Deli) for the delicious homemade rolls and cookies (great food). The class was well attended by LICA members, installers, designers and inspectors from around the state.

On September 16th, 2011 Best Ball Golf at Kenyon, Minnesota was held. This was a fundraiser for the scholarship awards program. A good time was had by all whom attended. Thank you to everyone that sponsored this important event and thank you to everyone who participated. Thank you Jim Walker for once again driving the beverage cart. It was a cold day for that job! We did not go thirsty.

Before you know it January will be here. Please plan to attend the Annual Convention January 15 – 17, 2012.
 Thank you and Respectfully submitted,
 Kevin Bakken
 President

MNLICA Web-Site; www.mnllica.org
 Or e-mail Nordis Estrem at dnestrem@frontiernet.net

T
TRACK II
 CORPORATION
 "Our 33rd Year" **www.track2corp.com**
 21860 Kenrick Ave.
 Lakeville, MN 55044

(800) 633-2332
(952) 469-3456

After Hours Call:
Steve DeBaun (651) 681-1672
Ron Lunn (952) 432-9321
Al Droge (218) 543-6644

**Call "Your Source" for all your
 Construction Machinery &
 Replacement Parts Needs!**
And if we don't have it...we'll get it!!!

We furnish the ultimate combination:
** Integrity*
** Experience * Quality*
** Providing the economical alternative*

BUY - RENT - LEASE

FEATURES

	Page
Presidents Report	2
Will efforts to bring High-Speed to rural areas hurt GPS signals	5
Stay safe while shipping on-line	6
THANK YOU ASSOCIATES	7
LICA Letter to Chief White—NRCS/USDA	8
Safety: Mounting and Dismounting Equipment	9
10 Major Regulations that could affect LICA	10
Increase Buying Power; Petrocon	11
Federal Budget 101	12
Recipe: Easy Chicken & Cheese Enchiladas	13
Directors Report	14
Recipe: One-Potato, Two Potato	15
Membership Application	15
Member Benefits	15
Scholarship Golf Outing	17
Upcoming Events	19

DISTRACTED DRIVING

AT WHAT COST?

Motor vehicle accidents are the leading cause of Death on the job. And driving distractions are the leading cause of motor vehicle accidents.* Families, businesses, and communities can be changed forever by a brief moment of inattentiveness behind the wheel.

Employers should develop, communicate, and enforce clearly defined policies that address driving distractions while operating a company vehicle. Your local Federated representative can help! Call today.

*It's Our Business
to Protect Yours.®*

FEDERATED
INSURANCE®

* National Highway Traffic Safety Administration Report, "What Do Traffic Crashes Cost? Total Cost to Employers by State and Industry," 1998-2000

The FEDERATED Insurance Companies
Home Office: 121 East Park Square, Owatonna, Minnesota 55060
(507) 455-5200 • www.federatedinsurance.com



We don't just promise

ZIEGLER DELIVERS

At Ziegler, we have so much confidence in our people and our performance that we promise extraordinarily fast response times and the highest quality workmanship. And we back it up with guarantees:

GUARANTEED WORKMANSHIP

We GUARANTEE we'll repair your equipment right the first time. All our maintenance and repair work carries a FREE one-year labor warranty.



GUARANTEED RESPONSE

We GUARANTEE we'll get to your worksite within three hours – two hours in the Twin Cities and Des Moines metro areas. If we can't, our travel charges are FREE.



GUARANTEED AVAILABILITY

We GUARANTEE we'll have any part within 24 hours of your expected delivery time. If we don't, the delivery charge to your location is FREE.



**Ziegler delivers.
Guaranteed.**

Some restrictions apply. For complete details, contact your Ziegler representative or nearest facility or visit www.zieglercat.com/guarantees.

800.352.2812

Brainerd • Buhl • Columbus • Crookston • Duluth • Fergus Falls • Marshall
Minneapolis • North Mankato • Rochester • Shakopee • St. Cloud

ZIEGLER 

www.zieglercat.com

Will the government's efforts to bring high speed internet to rural areas hurt GPS signals?

John Peterson, LICA Director of Government Relations.

In August I wrote an article about the possibility that the federal government's attempts to bring high-speed internet to rural America just may be using technology that would harm GPS signals nationwide. In looking into this whole issue, I learned that the VA Company involved, LightSquared, is right next door to me here in Northern Virginia, in Reston. LightSquared employs 350 people at its Reston headquarters, and hundreds of other contractors and engineers across the country that are building the network. LightSquared has been in the papers a lot lately, and this note is taken from a number of news articles on the subject

Sanjiv Ahuja, the president of LightSquared, said on Sept. 14th that his firm is close to solving the technical problems that have plagued its effort to build a nationwide high-speed network that critics, such as many LICA members, worry will cripple military and commercial navigation systems. Ahua said his system, which for months has been at the center of a controversy over the \$15 billion network, will slash consumers' cellphone bills by more than a third. Last week there was also supposed to have been a discussion of this topic before the House Armed Services subcommittee. The hearing was to examine claims from the GPS industry that the LightSquared network, which uses a portion of the radio frequency spectrum adjacent to the one used by GPS devices, will interfere with receivers used in its products such as in-car navigation systems. The subcommittee also heard from military officials about any potential impact on military GPS navigation systems such as those used in smart bombs. You may have read news stories about a general officer, who oversees this navigation technology for the military, saying the administration asked him to change his planned testimony, which expressed serious reservations about the LightSquared technology degrading military signals

At a different congressional hearing earlier this month, the government official in charge of maintaining the GPS system also expressed concern about the impact of LightSquared's planned network. Anthony Russo, director of the National Coordination Office for Space-Based Positioning, Navigation, and Timing, told the House Science Committee that "LightSquared's proposed system would create harmful interference (with GPS devices) throughout all three phases of its planned deployment."

Ahuja said that getting approval for the new network was one of the most politicized (regulatory) processes he had ever experienced in more than 30 countries where he has owned and operated telecommunications networks. However, he added that his company has worked with U.S. regulators and will be able to solve all the technical issues they raised in plenty of time to meet a Nov. 30th deadline to complete tests to show that the network will not interfere with GPS receivers. Many people I have talked to do not think this will happen.

Ahuja also said that his company had tried to be a "good neighbor" to the GPS industry which he blamed for the technical problems. He said GPS receivers should have been better designed to eliminate interference from neighboring areas of the spectrum, adding that the industry's response had been disappointing and in many ways irresponsible. However, industry says the spectrum was originally designated for satellite, not ground-based use. Dale Leibach, a spokesman for the industry group Coalition to Save Our GPS, said "Now LightSquared is trying to change the rules and repurpose it (the spectrum) for terrestrial transmission. This is a problem because LightSquared made a bad gamble."

Ahuja said his company aimed to fundamentally transform the way in which American consumers get telecommunications services and make a technological leap in both service quality and coverage at the same time. The LightSquared network would be the first to integrate ground-based cellular service from radio towers across the country and satellite-based service. He said "The new service will upend an industry in which the U.S. has become a laggard and not a leader. The U.S. ranks 17th in the world in terms of high-speed wireless penetration, comparable to Malta or Bahrain. Network coverage in Mumbai is superior to that in Memphis."

Ahuja also said "I like an engineering challenge. For months we've been trying to get this to be an engineering issue instead of leaked reports and innuendos and a politically driven process. We're trying to get it to be a fact-based conversation on engineering and technical date. That I can deal with very easily." Many of us following this issue hope Ahuja is right. We shall see.

NORTHLAND TRENCHING EQUIPMENT INC.



Inter-Drain 2050 GP

Your #1 Source For New & Used Trenchers & Plows

*Trimble Laser and GPS Systems

* Huge Parts Inventory

* Service

* Rentals

*Check out our website for all the
latest Inventory and info...
www.northlandtrenching.com
E-mail: nte@hickorytech.net*

Corporate Office:

12929 410 Ave. Waseca, MN 56093

Phone: 507-835-4214 Fax: 507-835-2032

Eastern Division:

3578 N. State Road 59 Brazil, Indiana 47834

Phone: 812-835-2900 Fax: 812-835-2535

STAY SAFE WHILE SHOPPING ONLINE

If you like many consumers today, you probably do some shopping online. Every year, online sales seem to increase dramatically. But while shopping from the convenience of your keyboard can save money, & gas, here are some important things to consider:

Know your retailer. It's always safer to shop with merchants you know. If you want to buy from a website that's new to you, do an online search for that merchant and "complaints" to check for negative chatter about the seller.

Use secure websites. When placing your order on the merchant's website, make sure that there is an "s" at the beginning of the web address: For example, the URL should begin "https://" instead of just "http://". Also, be sure to look for a padlock icon in the upper or lower right-hand portion of your computer screen. Both of these mean that the site you are visiting uses a high level of security to protect your personal information.

Credit cards give you greater protection than cash or debit cards. If you are not charged the correct amount for your purchase, or do not receive the merchandise you ordered, you can dispute the transaction under the Fair Credit Billing Act if you've used a credit card.

Choose your password carefully. Most websites require you to use a password to access your personal information and place orders. Be sure to create a password that is not easy for others to guess and use a combination of letters, numbers, and if possible, symbols such as "*" or "%" to make it more difficult for your information to be accessed by others.

Check the merchant's privacy policy. This will tell you how they plan to use your information-including whether they will share it with others. You may wish to avoid sellers that do not have privacy policy, as you have no way of knowing what they'll do with your data.

Always print and keep the receipt from your transaction. It contains all of the information from your order, including what you bought, the price you paid, and any order or confirmation number. This is vital if you need to follow up with the merchant or dispute your transaction.

CHOCOLATE PEANUT BRITTLE SUNDAE

3/4 Cup firmly packed light brown sugar

1/2 cup light corn syrup

6 Tablespoons butter

1/2 cup whipping cream

4 ounces semisweet chocolate, chopped

6 ounces peanut brittle, coarsely chopped (about 1 1/3 cups)

8 scoops (1-quart) vanilla ice cream

For sauce, in medium saucepan, combine brown sugar, corn syrup and butter. Cook over medium heat until mixture comes to a boil, stirring constantly. Reduce heat to low; simmer, without stirring, 6 minutes. Remove from heat. Add whipping cream and chocolate; stir until chocolate is melted and sauce is smooth. Cool to lukewarm. For each sundae, spoon 1 Tablespoon sauce in tall glass. Top with 1 Tablespoon peanut brittle and 1 scoop ice cream. Repeat. Drizzle with additional sauce and sprinkle with additional peanut brittle. Serves 4.



Agri Drain
CORPORATION

Your Partners in Water Management

We offer America's most complete selection of water management products for wetlands, ponds, lakes, controlled drainage, and sub surface irrigation. Along with tools, survey and safety equipment, and many hard to find items.

For a **FREE** catalog or to place an order—Call **1-800-232-4742**

Wetland Water Level Control Structures

P.O. Box 458 • 1462 340th Street • Adair, Iowa 50002
Fax: 1-800-282-3353 • Email: info@agridrain.com
www.agridrain.com

RECRUIT A NEW MEMBER TODAY!

MNLICA membership provides a stronger united voice on behalf of our industry.

MNLICA provides services and programs which you could not do on your own without spending more money and time. Such as MSHA, OSHA, Competent Person and other trainings.

MNLICA membership provides you with a professional effective hearing in government on state and federal levels.

MNLICA provides a great networking group throughout the state and USA.

MNLICA provides your company with resources for reduced costs on products your machines use.


We need you to **ASK ONE PERSON** to **JOIN TODAY!** *Just get one!*

THANK YOU ASSOCIATE SPONSORS SCHOLARSHIP GOLF


ADVANCED DRAINAGE SYSTEMS, INC
AGRI-DRAIN CORPORATION
CENTURY PLASTICS INC.
CONTINENTAL WESTERN GROUP
E E P
FEDERATED INSURANCE COMPANY
PRECISION INTAKES, LTD
PRINS INSURANCE
PRINSCO INC
RDO EQUIPMENT COMPANY
ROAD MACHINERY SUPPLY
ROSSCO EQUIPMENT INC.

**MNLICA SAYS
WE APPRECIATE YOUR
COMMITMENT TO EDUCATION!**


**Mention Wetlands, Drainage or Permits
and Someone will Mention
Rinke Noonan.**



KURT DETER



JOHN KOLB



GARY LEISTICO

Landowners are becoming increasingly aware of the difficulties in dealing with wetlands, drainage and acquiring permits. The DNR, NRCS, Corps of Engineers, county and local governments all may have interests that must be addressed.

Our work involves wetlands, drainage, and other water related issues, permits — areas of law that are constantly changing and becoming more specialized.

If you're facing a challenge in any of these areas, or are wondering if you could benefit from legal help, call Kurt, John or Gary at (320) 251-6700.

RINKE NOONAN
ATTORNEYS AT LAW

SUITE 700, NORWEST CENTER, 400 FIRST STREET SOUTH,
ST. CLOUD, MINNESOTA 56301 • (320) 251-6700

Wisconsin Plastic Drain Tile Corp.

Manufacture of plastic pipe and fittings for drainage.

800.362.6642



**201 W. PLYMOUTH STREET
JEFFERSON, WI 53549**

Toll Free: 1-800-362-6642
Fax: 920-674-2782
Email: dlucas@draintile.com

SIZES 3" – 48"
*SINGLE WALL
AND DUAL WALL*

FITTINGS AVAILABLE IN ALL SIZES

Free delivery within 300 mile radius.
Speedy delivery— 24-48 hours in most cases.
Good customer service.

1% of sales goes to American Cancer Society support
of Breast Cancer Awareness.

ph 920-674-3332 • www.draintile.com
Manufacturer of quality drain tile since 1972.

Chief Natural Resources Conservation Service, USDA
P.O.Box 2890, Room 5105-S
Washington, DC 20013-2890

Dear Chief White,

Recently members of The Land Improvement Contractors of America (LICA) have had the opportunity to use some computerized conservation planning tools that we believe could really help NRCS strengthen its core technical assistance function, giving land users information and options they need to make sound conservation decisions. As budget cuts continue, and we are afraid they will, and NRCS staffing levels diminish, the need for conservation work and technical assistance continues. The planning tools we have learned of have been developed by Agren, a small company in rural Iowa. These computerized online tools coupled to LIDAR and intuitive GIS-based technology, help land users quickly envision how practices such as farm ponds, grassed waterways, wetlands and other structural practices will fit on their land, and within minutes they even have accurate estimates of the likely costs involved.

It is my understanding NRCS in Iowa is piloting the use of these Agren conservation planning tools, and have found them to be immensely helpful. IA NRCS officials we have talked to really believe these tools save them time and improve planning accuracy. Our LICA members who have used them see the significant time savings realized with their use.

We also understand that Agren has proposed a national initiative with NRCS that would provide these tools to a total of 20 field offices in 10 states, and ultimately could make these tools functional for NRCS's use nationally. The purpose of my letter is to encourage NRCS to work with Agren on this national initiative. As NRCS's partner since the 1950's, and as the organization representing contractors that have installed most of the nation's conservation practices on the land, we see these tools improving our system of conservation planning and installation even as resources dwindle. Please call on LICA if we might help as you evaluate this initiative. It will aid NRCS, cooperators, and our environment.

Sincerely,

Steve Gerten
President Land Improvement Contractors of America

MOUNTING and DISMOUNTING EQUIPMENT

PRINS INSURANCE, INC.

Because jumping down off large equipment is a common practice for construction workers, it's no surprise that lower back, knee, ankle and neck injuries occur more frequently.

Regardless of the type of equipment you work with, mounting and dismounting safely should always be top of mind.

What you can do:

To lessen your risk of injuries, follow these simple mounting and dismounting instructions for trucks and other tall equipment or machinery.

When using a new piece of machinery, become familiar with proper mounting and dismounting procedures.

When a person jumps from a height of more than one foot, the force that goes through the body is about 14 times the person's body weight. In other words, a 165- pound man who jumps out of construction equipment or any other high surface is exerting 2,310 pounds of force on his body. This can cause injury to his bones, tendons and cartilage. And if you're doing this multiple times every workday, the damage to the body can be extensive.

When dismounting and mounting, maintain three-point contact. This means having contact with the construction equipment by either one foot and two hands or one hand and two feet. The smaller the triangle you form with your body, the more stable you are.

Always face the vehicle, both when mounting and dismounting.

Look at the surface below before stepping and make sure it is even to prevent ankle and knee injuries.

Never mount or dismount moving equipment.

Do not mount or dismount with anything, including tools, in your hands. Not only does it throw the body off-balance, it also reduces your chance of recovering your balance if you do slip. Use a drop rope to raise and lower supplies, tools and equipment instead.

Handholds and footholds are on the equipment for a reason—use them.

Wear appropriate clothing. Loose or torn clothing can get caught on equipment when you are jumping down instead of climbing down. In slippery conditions, wear proper footwear to prevent slipping hazards.

Proper vehicle maintenance also contributes to the safe mounting and dismounting of equipment. Make sure running boards, treads, steps and platforms are kept clear. Hazards like ice, snow and grease could cause slips, trips and falls.

By

John Peterson, LICA Director of Government Relations.

Excerpts from a August 29th memo on Planned House votes on 10 major regulations, 7 of which are environmental regulations that should interest LICA:

Utility MACT and CSAPR (Week of September 19): The Administration's new maximum achievable control technology (MACT) standards and cross-state air pollution rule (CSAPR) for utility plants will affect electricity prices for nearly all American consumers. In total, 1,000 power plants are expected to be affected. The result for middle class Americans? Annual electricity bill increases in many parts of the country of anywhere from 12 to 24 percent. H.R. 2401, the Transparency in Regulatory Analysis of Impacts on the Nation (TRAIN) Act, sponsored by Rep. John Sullivan (OK), would require a cumulative economic analysis for specific EPA rules, and specifically delay the final date for both the utility MACT and CSAPR rules until the full impact of the Obama Administration's regulatory agenda has been studied.

Boiler MACT (Week of October 3): From hospitals to factories to colleges, thousands of major American employers use boilers that will be impacted by the EPA's new "boiler MACT" rules. These new stringent rules will impose billions of dollars in capital and compliance costs, increase the cost of many goods and services, and put over 200,000 jobs at risk. The American forest and paper industry, for example, will see an additional burden of at least \$5-7 billion. H.R. 2250, the EPA Regulatory Relief Act, sponsored by Rep. Morgan Griffith (VA), would provide a legislative stay of four interrelated rules issued by the EPA in March of this year. The legislation would also provide the EPA with at least 15 months to re-propose and finalize new, achievable rules that do not destroy jobs, and provide employers with an extended compliance period.

Cement MACT (Week of October 3): The "cement MACT" and two related rules are expected to affect approximately 100 cement plants in America, setting exceedingly stringent requirements that will be cost-prohibitive or technically infeasible to achieve. Increased costs and regulatory uncertainty for the American cement industry—the foundation of nearly all infrastructure projects—are likely to offshore thousands of American jobs. Ragland, Alabama, for example, recently saw the suspension of a \$350 million cement production facility, putting 1,500 construction jobs on hold and additional permanent and high-paying plant operation jobs in limbo. H.R. 2681, the Cement Sector Regulatory Relief Act, sponsored by Rep. John Sullivan (OK), would provide a legislative stay of these three rules and provide EPA with at least 15 months to re-propose and finalize new, achievable rules that do not destroy jobs, and provide employers with an extended compliance period.

Coal Ash (October/November): These anti-infrastructure regulations, commonly referred to as the "coal ash" rules, will cost hundreds of billions of dollars, affecting everything from concrete production to building products like wall board. The result is an estimated loss of well over 100,000 jobs. H.R. 2273, the Coals Residuals Reuse and Management Act, sponsored by Rep. David McKinley (WV), would create an enforceable minimum standard for the regulation of coal ash by the states, allowing their use in a safe manner that protects jobs.

Ozone Rule (Winter): This effective ban or restriction on construction and industrial growth for much of America is possibly the most harmful of all the currently anticipated Obama Administration regulations. Consequences would reach far across the U.S. economy, resulting in an estimated cost of \$1 trillion or more over a decade and millions of jobs. Unlike her predecessors, EPA Administrator Lisa Jackson is pushing for a premature readjustment of the current ozone standards, dramatically increasing the number of "nonattainment" areas. The new readjustment rule is expected early this fall and I expect the Energy and Commerce Committee to act swiftly to prevent its implementation, in order to protect American jobs.

Farm Dust (Winter): The EPA is expected to issue revised standards for particulate matter (PM) in the near future. Any downward revision to PM standards will significantly impact economic growth and jobs for businesses and people throughout rural America that create dust, like the farmer in Atkinson, Illinois, who raised his concerns with the President at a town hall earlier this month. While the President may have sent him on a bureaucratic wild goose chase, the House will act promptly on H.R. 1633, the Farm Dust Regulation Prevention Act, sponsored by Rep. Kristi Noem (SD). H.R. 1633 would protect American farmers and jobs by establishing a one year prohibition against revising any national ambient air quality standard applicable to coarse PM and limiting federal regulation of dust where it is already regulated under state and local laws.

Greenhouse Gas (Winter): The EPA's upcoming greenhouse gas new source performance standards (NSPS) will affect new and existing oil, natural gas, and coal-fired power plants, as well as oil refineries, nationwide. While the impact on the economy and jobs are likely to be severe, the rules are quickly moving forward, once again revealing the Administration's disregard for the consequences of their policies on our jobs crisis. Again, I expect Chairman Upton and the Energy and Commerce Committee to move swiftly in the coming months to protect American jobs and consumers.

INCREASE YOUR BUYING POWER With the Petrocon Program & LICA

One of the ways the "big guys" maximize their dollars is through their ability to buy in volume. For the small contractor, that option has not been available...until now. National LICA has joined with Petrocon, a national buying group, to give our contractors and associate members the ability to increase their purchasing power...and at a significant savings!

What are the benefits of participating in the program?

Not only will members receive a minimum savings of 10% on their oil, tires, and lubricants, the Petrocon annual membership fee of \$2500.00 is waived!

The Petrocon /LICA program is:

- 1) Designed to reduce operating costs & expenses for LICA members by reducing prices from 10-40% for commodities such as: lubricants & greases, antifreeze, and tires, and
- 2) Designed for all size companies; from the one-man operation to the very large companies. This program is available to both contractor and associate members in good standing, pending credit approval.

Once you enroll, you gain access to the National Oil Program with Conoco/Phillips & the National Tire Program powdered by Goodyear Tire & Rubber. Petrocon is also working on adding a cell phone program.

Here's how it works:

After enrollment, you will be setup as a Petrocon National Account. This offers you a unique opportunity to buy direct from their suppliers through Petrocon as a "national account ship-to". Their pricing is all wholesale, national account pricing. With some companies, this equates to \$1 up to \$4 per gallon savings on oil & antifreeze & up to 20% on commercial tires. You also gain access to programs available only to National Account Customers, such as Goodyear's FleetHQ & TireHQ Program. Many benefits arise from these national offerings.

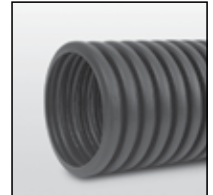
After Petrocon receives the enrollment papers, it takes about three weeks to get all of the account setups completed. Then, you will receive a Petrocon Welcome Packet with program details, ordering instructions, pricing, & your Petrocon ID number.

This program is open to new customers for Conoco/Phillips & Goodyear Tire. If you purchase oil & lubricants and/or tires from a variety of different providers, then you are also able to join. The reason the program is closed to current customers is because neither Conoco/Phillips nor Goodyear want to cannibalize their own business nor take it from their own local distributors.

The Petrocon program is delivered through local distributors. The Centers are nationwide. To help answer your questions on utilizing your current distributor, Petrocon needs to know what brand of oil & tires you are using.

The Petrocon program is designed to help the little guy buy products like the big guy...at discounted prices. They have a very aggressively priced program.

There is no obligation to purchase after enrollment has been completed, but it's the only way to give you access to the programs. The account number becomes active only after you place your first order.



Manufacturing Quality Drainage Systems Since 1972

Contact James Beevar at **507.438.7676** or
james@centurypipe.com for more information.

800.545.9546

www.centurypipe.com

Century Plastics, Inc.™ is a registered trademark of Advanced Drainage Systems, Inc.
© 2011 Advanced Drainage Systems, Inc. (AD070111) 04/11

Two little old ladies, Dorace & Jackie, were sitting on a park bench outside a local town hall where a flower show was in progress. Jackie leaned over and said, "Life is so boring. We never have fun anymore. For \$10 I'd take my clothes off & streak through the flower show!" You're on said Dorace, holding up \$10. So Jackie slowly fumbled out of her clothes & completely naked, streaked (as fast as an old lady can) through the front door of the flower show. Waiting outside, Dorace heard a huge commotion inside the hall, followed by loud applause & shrill whistling. Finally, the smiling Jackie came through the exit door surrounded by a cheering, clapping crowd. "What happened?" asked her friend. "I won \$1000 as 1st prize for the "Best Dried Arrangement!"

For more information or to join Petrocon:

Malcolm (Mac) Phillips
Midwest National Account Manager
9610 Tower Road, Gosport, IN 447433
Toll free: 866-548-8750
E-mail: MacP@petrocon.org
Web: www.petrocon.org

NEW NATIONAL LICA BENEFITS

NATIONAL EQUIPMENT REGISTER
Web-site www.nerusa.com

PETROCON
jdgiov@petrocon.org or 866-548-8750
www.petrocon.org

Federal Budget 101 -

The U.S. Congress sets a federal budget every year in the trillions of dollars. Few people know how much money that is so we created a breakdown of federal spending in simple terms. Let's put the 2011 federal budget into perspective:

- U.S. income: \$ 2,170,000,000,000
- Federal budget: \$ 3,820,000,000,000
- New debt: \$ 1,650,000,000,000
- National debt: \$14,271,000,000,000
- Recent budget cut: \$ 38,500,000,000 (about 1 percent of the budget)

It helps to think about these numbers in terms that we can relate to. Let's remove eight zeros from these numbers and pretend this is the household budget for the fictitious Jones family.

- Total annual income for the Jones family: \$ 21,700
- Amount of money the Jones family spent: \$ 38,200
- Amount of new debt added to the credit card: \$ 16,500
- Outstanding balance on the credit card: \$142,710
- Amount cut from the budget: \$ 385

So in effect last month Congress, or in this example the Jones family, sat down at the kitchen table and agreed to cut \$385 from its annual budget. What family would cut \$385 of spending in order to solve \$16,500 in deficit spending?

Now after years of this, the Jones family has \$142,710 of debt on its credit card (which is the equivalent of the national debt).

You would think the Jones family would recognize and address this situation, but it does not. Neither does Congress.

The root of the debt problem is that the voters typically do not send people to Congress to save money. They are sent there to bring home the bacon to their own home state.

To effect budget change, we need to change the job description and give Congress new marching orders.

It is awfully hard (but not impossible) to reverse course and tell the government to stop borrowing money from our children and spending it now. In effect, what we have is a reverse mortgage on the country.

So let us get to work and change this picture. Remember, your vote counts, but only if you cast it.

THE NEXT GENERATION Is Now Here.



The New BRON Drainage Plow

Introducing the totally redesigned BRON self-propelled drainage plow. From the ground up, new features give you better control, better productivity and better comfort.

- **Balanced Weight Distribution**
- **Improved Operator Visibility**
- **Electronic Digital Controls**
- **Ergonomic Cab Comfort**
- **FOPS/ROPS Certified**
- **Tri-Core Cooling System**

BRON
POWER TO PERFORM



rwfbron.com
1.800.263.1060

EEC110723-S02-01

EASY CHICKEN & CHEESE ENCHILADAS

- 1-can Cream of Chicken soup
- 2-cups chopped chicken
- 1/2 cup sour cream
- 1/2 cup shredded cheese
- 1-cup Picante Sauce
- 6-flour tortillas (warmed)
- 2-tsp. chili powder
- 1-small tomato (chopped)
- 1-green onion, sliced

1. Stir the soup, sour cream, Picante sauce & chili powder in a medium bowl.
2. Stir 1 cup Picante sauce mixture, chicken & cheese in a large bowl.
3. Divide chicken mixture among the tortillas. Roll up the tortillas & place seam side up in a 2-quart baking dish. Pour remaining Picante sauce mixture over filled tortillas.
4. Bake at 350 degrees for 40 minutes or until hot & bubbling. Top with tomato and onion

Serves 6

Preparation time; 10 minutes

ADULT TRUTHS

Bad decisions make good stories.

You never know when it will strike, but there comes a moment at work when you know that you just aren't going to do anything productive for the rest of the day.

I keep some people's phone numbers in my phone just so I know not to answer when they call.

I have a hard time deciphering the fine line between boredom and hunger.

Quality Concrete Drain Tile

- Competitive prices
- Full inventory of 5" to 48" Concrete Drain Tile
- Concrete T's, Intake Caps, Gates
- Fast delivery to your jobsite




Hector Tile Company, Inc.

721 South Main Street, Hector, Minnesota 55342

1-800-640-9910

WATER MANAGEMENT SOLUTIONS SINCE 1975



PRINSCO
ENGINEERED WITH INTEGRITY

For over 30 years, Prinsco has been developing more than just plastic pipe. We've been developing a reputation that's founded on one simple thing: **INTEGRITY**. It's how we design our products, it's how we treat our customers, it's how we do business.

Look for our **GOLD STRIPE** of quality to ensure your pipe has been engineered with integrity.

800.992.1725 | WWW.PRINSCO.COM

CORPORATE HEADQUARTERS:
1717 16th Street NE | 3rd Floor | Willmar, MN 56201

LOCATIONS: Fairfax, MN | Prinsburg, MN | Rose Creek, MN | Chatsworth, IL
Fort Dodge, IA | Jesup, IA | Bethany, MO | Fresno, CA

DIRECTORS REPORT


MNLICA would like to THANK each MEMBER and ASSOCIATE who took the time to attend the Scholarship Golf Outing. We appreciate your time and support to Your Organization!

We have started getting the MNLICA State Convention trainings scheduled with trainers. If you would like a particular topic placed on the schedule please call or Nordis Estrem 507-649-1771 or e-mail ndestrem@frontiernet.net. I have had some members call with great ideas and it looks like we should have a very interesting convention with topics of interest for all small contractors.

Remember, **JUST GET ONE**, new member and we double our membership! **Thank YOU!**

In January MNLICA will be hosting two out-state trainings. One will be held in Sauk Centre on OSHA and DOT, a two day training. The other will be a one day MSHA at Kevin Bakken's shop between Northfield and Dennison. See you there!

Continental Western Group®



Land Improvement Contractors of America
LICA

HOW DOES YOUR POLICY STACK UP?

- POLICIES DESIGNED SPECIFICALLY FOR DIRT MOVERS
- A SAFETY GROUP PROGRAM, OVER \$1,000,000 PAID BACK TO LICA CONTRACTORS IN THE FORM OF A DIVIDEND

LICA RECOMMENDED INSURANCE PROGRAM
FOR MORE INFORMATION, CONTACT YOUR INSURANCE AGENT OR VISIT WWW.PRINSINS.COM.

Administered by:
PRINS INSURANCE, INC.
SINCE 1936

Copyright © 2010 Continental Western Group, LLC. All rights reserved.

One Potato, Two Potato Casserole

1-Garlic clove, Halved
3-Yukon Gold or Red Potato, 1/4#, peeled and cut into 1/8" slices
1-Sweet Potato, 1/2#, peeled and cut into 1/8" slices
1-(10oz.) package triple washed, fresh baby spinach, coarsely chop
1-Tablespoon butter (melt)
1-1/2 Teaspoons fresh ground pepper, divided
1/8-Teaspoon ground nutmeg
1/2-Teaspoon lemon juice
1-slice dry whole-wheat bread, torn into pieces
1/2 cup milk
1-Tablespoon olive oil, divided
1-1/2 teaspoon salt, divided

Pre-heat oven to 425 degrees.

Rub garlic on bottom & sides of a 1-1/2 quart baking dish. Lightly coat the bottom & sides of the dish with 1-teaspoon of the olive oil.

Arrange 1/2 the spinach & white potato slices in a layer on the bottom of the dish. Sprinkle with 1/2 teaspoon salt & pepper. Top with 1/2 sweet potato slices & remaining spinach. Drizzle melted butter over potato mixture & sprinkle 1/2 teaspoon salt & pepper. Layer remaining white potato slices over seasoned potato mixture. Top with remaining sweet potato slices, 1/2 teaspoon salt & pepper.

In a small saucepan over medium heat, combine milk & nutmeg. Bring to a boil. Remove from heat & pour evenly over potato mixture. Cover with foil & bake 40 minutes. Remove from oven, keep foil on.

Prepare bread pieces in food processor until small crumbs form. Add remaining 2 teaspoons of olive oil, lemon juice and pulse to blend. Remove foil from casserole & sprinkle over top of potato. Bake until potatoes are tender & topping & edges are brown, about 15 minutes. Let stand 5 minutes. Serves 6-8.

MEMBER BENEFITS

MEMBERSHIP APPLICATION

Please enroll me as a Member of the Minnesota Land Improvement Contractors Association. I understand that I will receive all member benefits, and that they will begin as soon as my application is approved and my dues are received in the State Office. My membership fee includes membership in the National Land Improvement Contractors of America.

Name: _____

Spouse: _____

Company: _____

Address: _____

City,State,Zip: _____

Phone: _____

Fax: _____

Email: _____

Birthday (for Ins.): _____

Please enclose check payable in the appropriate amount as indicated below and mail this form to:
MNLICA, 9600 South Dennison Blvd.
Northfield, MN. 55057

Contractor Member	\$350.00
Associate Member	\$200.00
Retired Member	\$ 50.00

- 1.A D & D INSURANCE (MN. Only)
- 2.**CONTRACTOR CERTIFICATION PROGRAM**
- 3.NATIONAL & STATE NEWSLETTERS
- 4.**SAFETY MANAGEMENT PROGRAMS**
- 5.OSHA TRAININGS
- 6.**MSHA TRAININGS**
- 7.SSTS TRAININGS
- 8.**UPDATES ON THE NEWEST LAWS and REGULATIONS; State and National**
9. FELLOWSHIP with the Friendly Competitors
- 10.**DISCOUNT PROGRAMS** Local and National
- 11.LAND & WATER MAGAZINE
- 12.**STATE/NATIONAL SCHOLARSHIPS**
For your Children/Grandchildren and Employees Children
13. **SAFETY MANUAL WITH OSHA FORMS**
14. WINTER & SUMMER CONVENTIONS
15. **ACCESS TO DRUG & ALCOHOL TESTING**
16. REWARD PROGRAM FOR THEFT and VANDALIZED EQUIPMENT
17. **GAIN LEADERSHIP SKILLS**
18. ACCESS TO A WIDE VARIETY OF EQUIPMENT SUPPLIES & ADVICE IN AREAS OF BUSINESS
19. **SELF-INSURED WORK COMP PROGRAM ACCESS (EEP)**
- 20.BEYOND PERKS CARD (Discount's on line)
21. **RETIREMENT PROGRAM**
22. REPRESENTATION ON USDA COMMITTEE
23. **REPRESENTATION on the NATIONAL WATERSHED COALITION COMMITTEE**
24. REPRESENTATION on the COMMON GROUND ALLIANCE COMMITTEE
25. **REPRESTATION with MINNESOTA and WASHINGTON DC LEGISLATORS**
26. REPRESENTATION ON MPCA COMMITTEE
27. **HAVE FUN and NETWORK WITH OTHER CONTRACTORS AROUND THE U S A**
28. PETROCON (Savings on Lubricants, Tires, Oil, etc)

LICA MISSION STATEMENT

**To promote, perpetuate and improve
The proper use of our renewable natural
Resources for the benefit of all!**

COMPLETE TRACK SERVICE

New and Used Undercarriage Parts

- FINAL DRIVE AND STEERING CLUTCH PARTS & REPAIR
- LINE BORING SERVICE
- DOZER BLADE PARTS AND REPAIR
- DRAGLINE AND BACKHOE REPAIR & PARTS
- CRUSHER ROLL REBUILDING
- COMPLETE UNDERCARRIAGE REBUILDING

ALL MAKES OF MACHINES Call For Prices

(507) 387-3121

Please include machine serial number



Crawler Welding, Inc.

319 Pintail Street • Mankato, MN 56001



Jct. Hwy. 169 So. & Hwy. 68, Mankato, MN

James Duininck, Prinsco Vice President of Sales
 320.222.6800
JamieD@prinsco.com
www.prinsco.com

Prinsco Responds to Overwhelming Demand: New Midwest Plant Will Add to Vastly Increased Production of Agricultural Drainage Products

Willmar, Minnesota – September 15, 2011: Prinsco Inc., manufacturer of premium water management products, is responding to this season's overwhelming demand for agricultural drainage products with plans to open a new manufacturing plant in the upper Midwest's Fargo/Moorehead area. It will be operational in January of 2012 and have two production lines, with plans for a third by the end of that year. These additions, along with upgrades at other facilities, mean a vast increase in single-wall tile production.

"2011 is shaping up to be a remarkable year... coming right on the heels of 2010's record-breaking season. I could not have predicted this kind of sustained growth," says Prinsco Agricultural Sales Manager, Kent Rodelius. "Prinsco has done everything possible to expand our infrastructure and make the investments needed to meet this additional demand as quickly as possible."

The Fargo/Moorehead plant is Prinsco's second new manufacturing facility in twelve months. In February of 2011, they started operations at their new Beresford, South Dakota, plant which is also slated to add a third production line by October of this year. Prinsco has also completed key upgrades that will improve efficiency at all of their Midwestern plants.

"There are always growing pains when you expand quickly, but we are committed to meeting the needs of our loyal customers. As they embrace the benefits of strategic water management, we want to continue being their provider of choice. For that reason, our approach to growth has been cautious and strategic, yet aggressive," adds Jeremy Duininck, Prinsco Vice President of Operations. "Our investments are focused not only on facilities and equipment, but on the staff support needed for quality control, safety and efficiency. We need to grow without sacrificing the high standards and values that are important to us."

"This is an exciting time at Prinsco!" comments Jamie Duininck, Prinsco Vice President of Sales. "As we've been expanding our facilities, we've also been expanding our product line. Most recently we introduced ECOFLO®100 – an industry first. It's a recycled, dual-wall pipe with an unprecedented 100-year service life. It's a green-friendly product that will help farmers increase the performance of their critical drainage mains, and also help engineers/contractors feel comfortable using eco-friendly pipe in their commercial storm water and detention projects." He adds, "Prinsco is really growing right now, in more ways than one."

Prinsco has been a leader in the agricultural water management industry since 1975, offering quality products engineered to improve crop performance by managing moisture conditions in the soil. Their single- and double-wall HDPE pipe is widely known as "the pipe with the gold stripe." Prinsco also offers engineered water management solutions for the residential, commercial, highway, recreational turf and storm water quality markets. Prinsco was started in Prinsburg, Minnesota, and has expanded to include plants in Minnesota, Illinois, Iowa, Missouri, California, South Dakota, and now North Dakota.

Visit www.prinsco.com for more information about the products and services available exclusively from Prinsco.

MNLICA SCHOLARSHIP GOLF KENYON, MN

MNLICA Associates and Members alike had a fun day at the Kenyon Golf Course on Friday, September 16th. Seven teams participated and all scores were within twelve points from the first place team to the bottom team (which unfortunately I was on). Great playing teams! I felt a good time was had by all who attended. The meal at PAPA's Restaurant downtown Kenyon was also excellent.

The Barnett Team along with RDO's Matt Duell took the first place with a score of 29, followed closely by the Hodgman team with a score of 31.

Brent Dohrmann from Hodgman Drainage won the Federated, Ins. Putter for the longest putt of the day. Congratulations to all!!



All proceeds go to the Scholarships for two (2) one-thousand dollar scholarships for high school seniors of MNLICA members or their employees children. Make sure if you or your employees have a graduating senior you get the form from Nordis or Jeanie and turn in back in by March of 2012. There are also eight (8) National LICA scholarships given to members children in any year of college. **Just APPLY!!**

WOLFE PLOWS WOLFE 450 XLT PLOW



**WOLFE PLOWS, CHAIN, AND WHEEL
TRENCHERS**

PARSONS/KOEHRING PARTS & SERVICE

A&E Construction Supply
410 N 5th Ave E
Truman MN 56088
(800)736-3413



www.a-econstsupply.com
email: aeconst@frontiernet.net

PROVEN PERFORMANCE / BUILT TO LAST

MNLICA WEB MAIL

To get items on the MNLICA Web page please contact Mike Lehman at 507-345-5263 or you may e-mail him at mlehman@hickorytech.net

Precision Intakes Full Line of Surface Water Intakes

- 8" & 10" riser with patented 8" & 10" combination Tees.
- Also 6" square & round risers with patented reducing Tee.
- Constructed of heavy-weight, high-density polyethylene.
- Parts highly adjustable & interchangeable with others on the market.
- Orifice plate placed at tee level or at ground level.
- Exclusive locking device on each part.
- User Friendly-Priced effectively.
- Adaptor available to repair old metal or broken intakes.



Why inventory 2, when 1 serves both!

"Dealer Inquires Welcome"

PRECISION INTAKES
Norm & Coretha Rozendaal
2064 Republic Ave West
Monroe, IA 50170

(800) 932-7611
(641) 259-2651
(641) 259-3218 Fax

CASE Raising your Expectations

CONSTRUCTION



Take your business to a new level. Step up to a Case Compact Wheel Loader. The E Series has a big attitude and power to spare. You'll experience better reach, increased attachment visibility, precise level lifting and greater bucket rotation with Case Versa-Boom loader arms. Our cabs have big cab features, boosting your operator's comfort and productivity. Plus, our compact wheel loaders are compatible with countless attachments from tree spades and augers to pallet forks and snow blades. Three hydrostatic drive models available from 51 net horsepower to 72 net horsepower.

Tough in the Tread.

Get big machine durability and efficiency with our new Compact Track Loaders. Featuring proven Case undercarriage technologies, these mini-brutes deliver long component life. Permanently sealed rollers and idlers assure reliable performance. These Compact Track Loaders give you the toughness your jobs demand. Available in four models with 69 net hp to 83 net hp, Tier III engines. Pilot Control (ISO or "H" pattern) optional on select units.



Big Power.

Compact Machine.

Case CX Compact Excavators deliver traditional excavator power to compact and restricted job sites. Through narrow doorways, against buildings or between structures, the Case CX Compact Excavators slip onto the tightest spaces to provide all the power and performance you need. Pattern selector standard on all five models ranging from 3240 pounds to 10,261 pounds.

St. Joseph Equipment has factory trained technicians to keep your new and used equipment at optimum performance. The parts department is fully stocked for all your maintenance needs. Financing and Leasing plans available. Call or stop by at one of our five convenient locations:

Shakopee

Elk River

Duluth

952-445-5400

763-262-4474

218-727-2827

Rochester

La Crosse

507-288-3402

608-788-1025

Visit us on the web: www.stjosephequipment.com

ST. JOSEPH
SJE
EQUIPMENT

OFFICERS**PRESIDENT**

Kevin Bakken
Bakken Excavating, LLC
9600 South Dennison Blvd.
Northfield, MN. 55057
612-328-2784

VICE PRESIDENT

Mark Morreim
Morreim Drainage, Inc.
71610 263rd Street
Albert Lea, MN. 55007
507-826-3449

TREASURER

Doug Gysbers
Doug's Back-Hoe Service
6551 357th Street Way
Cannon Falls, MN 55009

CHAIRMAN

Doug Gysbers
Doug's Backhoe Service
6551 357th Street Way
Cannon Falls, MN. 55009
507-263-5630

MNLICA OFFICE

Nordis Estrem-Exec. Director
Estrem Excavating, Inc.
4605 County 49 Blvd.
Dennison, MN. 55018
dnestrem@frontiernet.net
Cell: 507-649-1771
Phone: 507-789-5725
Fax: 507-789-6033

Jeanie Bakken
9600 South Dennison Blvd.
Northfield, MN. 55057
bakken4957@gmail.com
507-645-6905
Cell: 651-343-5866
Fax: 507-645-1654

NATIONAL LICA

3080 Ogden Avenue
Suite 300
Lisle, IL. 60532
Phone: 630-548-1984
Fax: 630-548-9189

AREA STATE DIRECTORS

Chuck Wingert-**SE Vice Chair**
Wingert Realty & Land Surveying
Mankato, MN. 56001

Bruce Holst-**SE Area Chair**
Bruce's Back-hoe Service, Inc.
Goodhue, MN. 55027

Don Estrem-**SE Sec.**
Estrem Excavating, Inc.
Dennison, MN. 55018

Don Loken
Don Loken Exc. & Drainage
Owatonna, MN. 55060

Karlen Nelson-**SW & NO. Area Chair**
Nelson Brothers Tiling
Nicollet, MN. 56074

Stu Frazier
Stu Frazier Tiling
Canby, MN. 56220

Justin Wildfeuer
Gass Trenching, Inc.
Fulda, MN. 56131

Greg Walsh
Greg Walsh Enterprises
Murdock, MN. 56271

Otto Templin
E & T Contracting, Inc.
Hutchinson, MN. 55350

Mark Gregor
Gregor Tiling
Minnesota Lake, MN. 56068

Darren Anderson
Anderson Rock & Lime, Inc.
Cannon Falls, MN. 55009

Kevin Ellingson
Ellingson Company, Inc.
West Concord, MN. 55985

Doug Breberg
Larson Tiling, Inc.
Dawson, MN. 56232

Roger Molenaar-**Retired**
Molenaar Drainage
Renville, MN. 56284

Kent Rodelius-**Associate**
Prinsco, Inc.
Willmar, MN. 56201

James Becvar-**Associate**
Century Plastics, Inc.
Hayfield, MN. 55940

2011-2012 UPCOMING EVENTSMNLICA Web-site:www.mnllica.org**2011**

September 29	Fall Board Meeting	Big Dog Sports Café North Mankato
---------------------	---------------------------	--

2012

January 15-17	MNLICA Convention	Best Western Hotel North Mankato
January 18	SSTS (6-hour) class	Best Western Hotel North Mankato
January	OSHA 10 hour & DOT	Sauk Centre, MN
February 7	MSHA	Bakken Shop, Northfield



MNLICA

9600 S. Dennison Blvd.
Northfield, MN 55057

PRSRT STD
US POSTAGE PAID
OWATONNA MN
PERMIT NO 41

Address Service Requested

THE LICA CREED

*Land, the foundation of the nation,
the basis of all wealth,
the heritage of the wise, the thrifty and prudent,
the poor man's joy and comfort,
the silent partner of man,
the producer of food, fiber and fuel,
the basis of factories,
the foundation of banks.*

*All that man builds is from the land.
We often take it for granted, or even abuse it,
and yet many unthinkingly and unknowingly pass the land by.
What man finally does with the land
will be the deciding factor in his survival.*